

- > **Port size: 1/4" ... 3/4"**
(ISO G/ PTF)
- > **Complete air processing units**
pre-assembled,
ready to install



Technical features

Medium:

Compressed air only

Maximum operating pressure:

17 bar (246 psi)

Pressure range:

0,3 ... 10 bar (4 ... 145 psi)

Port sizes:

G1/4, G3/8, G1/2 or G3/4

Gauge ports:

Rc 1/8

Relieving:

Standard

Element:

40 µm

Drain:

Manual or automatic

Automatic drain conditions:

Pressure to close drain:

> 0,3 bar (4.3 psi)

Pressure to open drain:

< 0,2 bar (2.9 psi)

Minimum air flow to close drain:

0,6 dm³/s (1.3 scfm)

Bowl size (lubricator):

0,2 litre (7 fluid oz)

Ambient/Media temperature:

-20° ... +80°C (-4 ... +176°F)

Version with gauge:

-20° ... +65°C (-4° ... +149°F)

Air supply must be dry enough to avoid ice formation at temperatures below +2°C (+35°F).

Materials:

Body and yoke: Zinc alloy

Connection piece: Aluminium

Metal bowl: Aluminium

Prismatic liquid level indicator:

Grilamid

Sight dome: transparent PA

Element: Sintered bronze or plastic

Elastomers: NBR

Please contact IMI Norgren for following options:

Pressure range:

0,3 ... 4 bar (4 ... 58 psi)

0,7 ... 17 bar (2 ... 250 psi)

Port size:

1/4 PTF, 3/8 PTF 1/2 PTF , 3/4 PTF

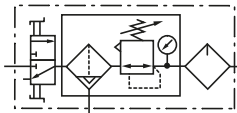
Element:

5 µm

Bowl size (lubricator):

1 litre





Technical data BL64 - standard models; automatic drain







Symbol	Port size	Size	Pressure range (bar)	Element (µm)	Drain	Lubricator	Mounting	Gauge	Shut-off valve	Model
	G1/4	—	0,3 ... 10	40	Automatic	Micro fog	Bracket	With	With	BL64-201
	G3/8	—	0,3 ... 10	40	Automatic	Micro fog	Bracket	With	With	BL64-301
	G1/2	Basic	0,3 ... 10	40	Automatic	Micro fog	Bracket	With	With	BL64-401
	G3/4	—	0,3 ... 10	40	Automatic	Micro fog	Bracket	With	With	BL64-601
	G1/4	—	0,3 ... 10	40	Automatic	Oil fog	Bracket	With	With	BL64-211
	G3/8	—	0,3 ... 10	40	Automatic	Oil fog	Bracket	With	With	BL64-311
	G1/2	Basic	0,3 ... 10	40	Automatic	Oil fog	Bracket	With	With	BL64-411
	G3/4	—	0,3 ... 10	40	Automatic	Oil fog	Bracket	With	With	BL64-611
	G1/4	—	0,3 ... 10	40	Automatic	Micro fog	—	With	With	BL64-202
	G3/8	—	0,3 ... 10	40	Automatic	Micro fog	—	With	With	BL64-302
	G1/2	Basic	0,3 ... 10	40	Automatic	Micro fog	—	With	With	BL64-402
	G3/4	—	0,3 ... 10	40	Automatic	Micro fog	—	With	With	BL64-602
	G1/4	—	0,3 ... 10	40	Automatic	Oil fog	—	With	With	BL64-212
	G3/8	—	0,3 ... 10	40	Automatic	Oil fog	—	With	With	BL64-312
	G1/2	Basic	0,3 ... 10	40	Automatic	Oil fog	—	With	With	BL64-412
	G3/4	—	0,3 ... 10	40	Automatic	Oil fog	—	With	With	BL64-612

Technical data BL64 - standard models, manual drain

Symbol	Port size	Size	Pressure range (bar)	Element (µm)	Drain	Lubricator	Mounting	Gauge	Shut-off valve	Model
	G1/4	—	0,3 ... 10	40	Manual	Micro fog	Bracket	With	With	BL64-221
	G3/8	—	0,3 ... 10	40	Manual	Micro fog	Bracket	With	With	BL64-321
	G1/2	Basic	0,3 ... 10	40	Manual	Micro fog	Bracket	With	With	BL64-421
	G3/4	—	0,3 ... 10	40	Manual	Micro fog	Bracket	With	With	BL64-621
	G1/4	—	0,3 ... 10	40	Manual	Oil fog	Bracket	With	With	BL64-231
	G3/8	—	0,3 ... 10	40	Manual	Oil fog	Bracket	With	With	BL64-331
	G1/2	Basic	0,3 ... 10	40	Manual	Oil fog	Bracket	With	With	BL64-431
	G3/4	—	0,3 ... 10	40	Manual	Oil fog	Bracket	With	With	BL64-631
	G1/4	—	0,3 ... 10	40	Manual	Micro fog	Bracket	—	With	BL64-222
	G3/8	—	0,3 ... 10	40	Manual	Micro fog	Bracket	—	With	BL64-322
	G1/2	Basic	0,3 ... 10	40	Manual	Micro fog	Bracket	—	With	BL64-422
	G3/4	—	0,3 ... 10	40	Manual	Micro fog	Bracket	—	With	BL64-622
	G1/4	—	0,3 ... 10	40	Manual	Oil fog	Bracket	—	With	BL64-232
	G3/8	—	0,3 ... 10	40	Manual	Oil fog	Bracket	—	With	BL64-332
	G1/2	Basic	0,3 ... 10	40	Manual	Oil fog	Bracket	—	With	BL64-432
	G3/4	—	0,3 ... 10	40	Manual	Oil fog	Bracket	—	With	BL64-632

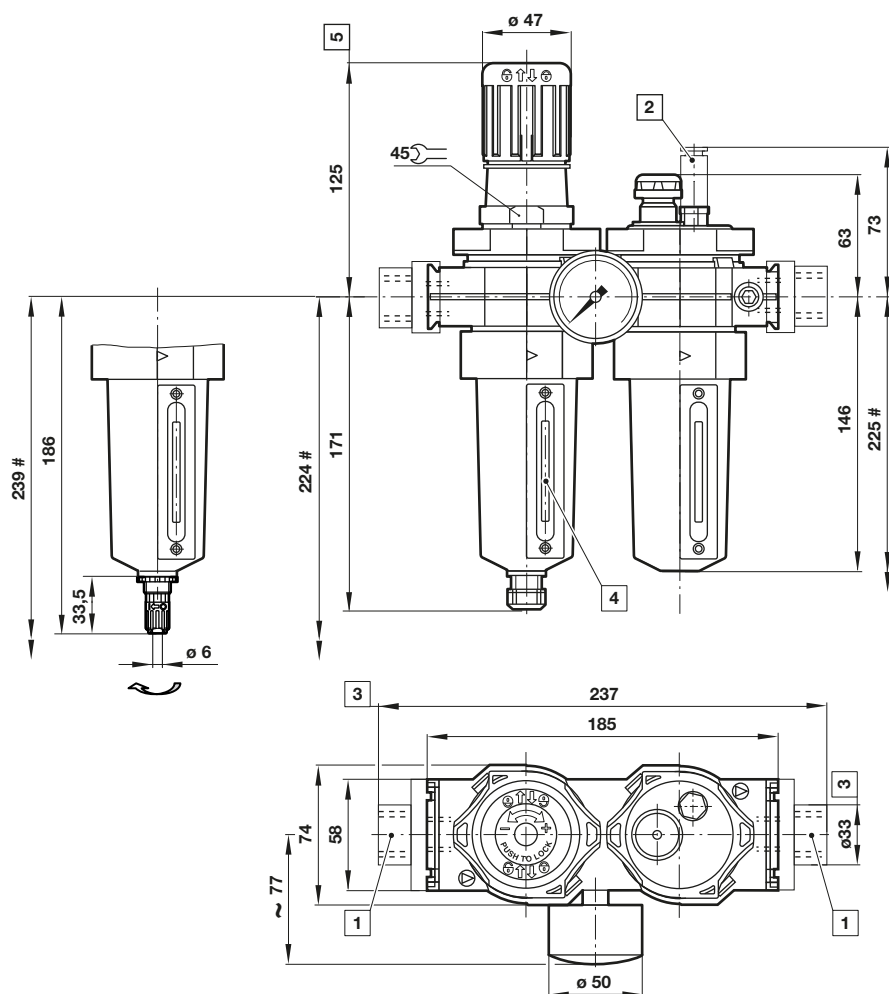
Accessories

	3/2 Shut-off valve Threaded inlet only	Threaded outlet only	End connector kit	Rear entry bracket kit
				
Thread				
G1/4	T64T-2GB-P1N	T64T-2GC-P1N	—	—
G3/8	T64T-3GB-P1N	T64T-3GC-P1N	—	—
G1/2	T64T-4GB-P1N	T64T-4GC-P1N	74505-50	—
G3/4	T64T-6GB-P1N	T64T-6GC-P1N	74505-53	18-026-981
1/4 PTF	T64T-2AB-P1N	T64T-2AC-P1N	—	—
3/8 PTF	T64T-3AB-P1N	T64T-3AC-P1N	—	—
1/2 PTF	T64T-4AB-P1N	T64T-4AC-P1N	74505-52	—
3/4 PTF	T64T-6AB-P1N	T64T-6AC-P1N	74505-55	—

Quick fill device	Tamper resistant cap & seal wire	Yoke connector kit	Porting block	Adjustable pressure switch	Padlock with two keys
					
18-011-024	4355-51	74503-51	74507-50	4346-99	0613633 (brass)

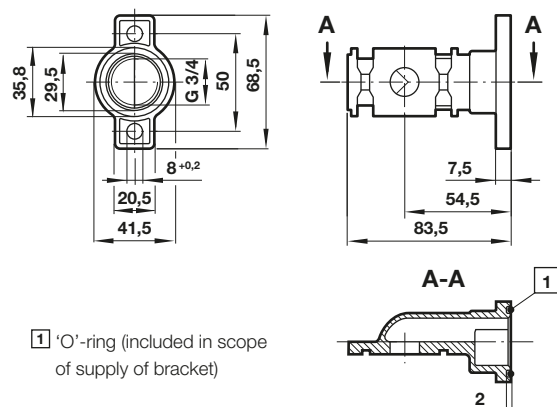
Basic dimensions

Dimensions in mm
 Projection/First angle



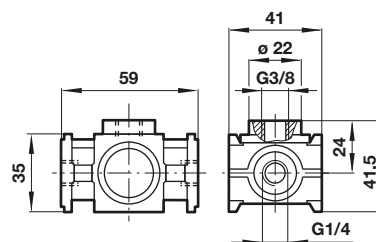
- # Minimum clearance required to remove bowl
- 1 Main ports 1/4", 3/8", 1/2" or 3/4"
 - 2 Quick fill device
 - 3 For main ports 3/4" only
 - 4 Sight glass
 - 5 Reduces by 4 mm with knob in locked position

Rear entry bracket 18-026-981



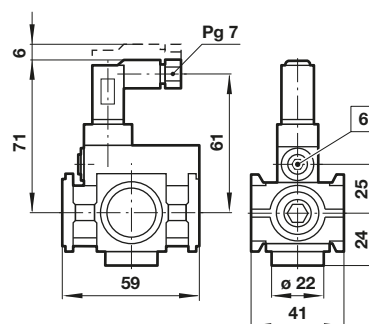
Porting block 74507-50

Dimensions in mm
 Projection/First angle



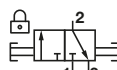
Adjustable pressure switch 4346-99

Voltage	24 V d.c./240 V a.c.
Current	0,5 A (d.c.); 5 A (a.c.)
Pressure range	2 ... 10 bar
Repeatability	2% of full set point range at 20°C
Average deadband	0,8 ... 1,7 bar
Electrical connection (corresponding to choosen coil)	EN 175301-803 - Form C, 15 mm
Degree of protection:	IP65
Adjustable	Standard
Material	Body: Aluminium, Elastomers: NBR

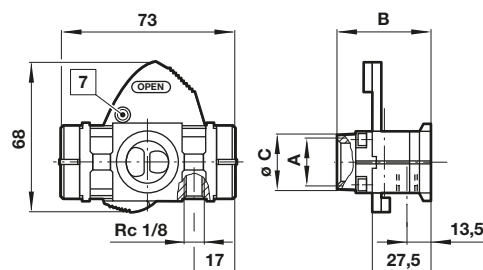


6 Adjusting screw

3/2 Shut-off valve

Symbol	A	B	ø C	Model
	G1/4	48	27	T64T-2G*-P1N
	G3/8	48	27	T64T-3G*-P1N
	G1/2	48	27	T64T-4G*-P1N
	G3/4	51	33	T64T-6G*-P1N

* B = Threaded inlet only, C = Threaded outlet only



7 Padlock hole ø7,5 mm

Warning

These products are intended for use in industrial compressed air systems only. Do not use these products where pressures and temperatures can exceed those listed under

»Technical features/data«.

Before using these products with fluids other than those specified, for non-industrial applications, life-support systems or other applications not within published specifications, consult IMI Precision Engineering, Norgren GmbH. Through misuse, age, or malfunction, components used in fluid power systems can fail in various modes.

The system designer is warned to consider the failure modes of all component parts used in fluid power systems and to provide adequate safeguards to prevent personal injury or damage to equipment in the event of such failure.

System designers must provide a warning to end users in the system instructional manual if protection against a failure mode cannot be adequately provided.

System designers and end users are cautioned to review specific warnings found in instruction sheets packed and shipped with these products.

- > **Port size:** 3/4" ... 1 1/2"
(ISO G/ PTF)
- > **Complete air processing units pre-assembled, ready to install**



Technical features

Medium:

Compressed air only

Maximum operating pressure:

17 bar (246 psi)

Pressure range:

0,4 ... 8 bar (5 ... 116 psi)

Port sizes:

G3/4, G1, G1 1/4 or G1 1/2

Gauge ports:

Rc 1/8

Relieving:

Standard

Filter element:

40 µm;

Drain:

Manual or automatic

Automatic drain conditions:

Pressure to close drain:

> 0,3 bar (4.3 psi)

Pressure to open drain:

< 0,2 bar (2.9 psi)

Minimum air flow to close drain:

0,6 dm³/s (1.3 scfm)

Bowl size (lubricator):

0,5 litre (17 fluid oz)

Ambient/Media temperature:

-20° ... +80°C (-4° ... +176°F)

Version with gauge:

-20° ... +65°C (-4° ... +149°F)

Air supply must be dry enough to avoid ice formation at temperatures below +2°C (+35°F).

Materials:

Body, bowl and yoke: Aluminium

Liquid level indicator: Pyrex

Filter element: Sintered plastic

Elastomers: NBR

Available versions on request

Pressure range:

0,3 ... 4 bar (4 ... 58 psi),

0,7 ... 17 bar (10 ... 246 psi)

Port size:

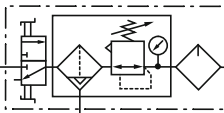
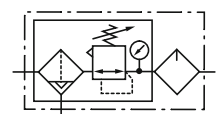
3/4 PTF, 1 PTF, 1 1/4 PTF,

1 1/2 PTF

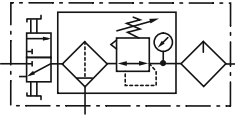
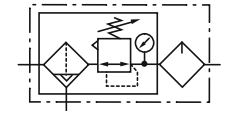
Element:

5 µm




Technical data BL68 - standard models; automatic drain


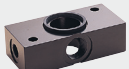

Symbol	Port size	Size	Pressure range (bar)	Element (µm)	Drain	Lubricator	Mounting	Gauge	Shut-off valve	Model
	G3/4	—	0,4 ... 8	40	Automatic	Micro fog	Bracket	With	With	BL68-601
	G1	Basic	0,4 ... 8	40	Automatic	Micro fog	Bracket	With	With	BL68-801
	G1 1/4	—	0,4 ... 8	40	Automatic	Micro fog	Bracket	With	With	BL68-A01
	G1 1/2	—	0,4 ... 8	40	Automatic	Micro fog	Bracket	With	With	BL68-B01
	G3/4	—	0,4 ... 8	40	Automatic	Oil fog	Bracket	With	With	BL68-611
	G1	Basic	0,4 ... 8	40	Automatic	Oil fog	Bracket	With	With	BL68-811
	G1 1/4	—	0,4 ... 8	40	Automatic	Oil fog	Bracket	With	With	BL68-A11
	G1 1/2	—	0,4 ... 8	40	Automatic	Oil fog	Bracket	With	With	BL68-B12
	G3/4	—	0,4 ... 8	40	Automatic	Micro fog	Bracket	With	Without	BL68-605
	G1	Basic	0,4 ... 8	40	Automatic	Micro fog	Bracket	With	Without	BL68-805
	G1 1/4	—	0,4 ... 8	40	Automatic	Micro fog	Bracket	With	Without	BL68-A05
	G1 1/2	—	0,4 ... 8	40	Automatic	Micro fog	Bracket	With	Without	BL68-B06
	G3/4	—	0,4 ... 8	40	Automatic	Oil fog	Bracket	With	Without	BL68-615
	G1	Basic	0,4 ... 8	40	Automatic	Oil fog	Bracket	With	Without	BL68-815
	G1 1/4	—	0,4 ... 8	40	Automatic	Oil fog	Bracket	With	Without	BL68-A15
	G1 1/2	—	0,4 ... 8	40	Automatic	Oil fog	Bracket	With	Without	BL68-B16

Technical data BL68 - standard models, manual drain

Symbol	Port size	Size	Pressure range (bar)	Element (µm)	Drain	Lubricator	Mounting	Gauge	Shut-off valve	Model
	G3/4	—	0,4 ... 8	40	Manual	Micro fog	Bracket	With	With	BL68-621
	G1	Basic	0,4 ... 8	40	Manual	Micro fog	Bracket	With	With	BL68-821
	G1 1/4	—	0,4 ... 8	40	Manual	Micro fog	Bracket	With	With	BL68-A21
	G1 1/2	—	0,4 ... 8	40	Manual	Micro fog	Bracket	With	With	BL68-B22
	G3/4	—	0,4 ... 8	40	Manual	Oil fog	Bracket	With	With	BL68-631
	G1	Basic	0,4 ... 8	40	Manual	Oil fog	Bracket	With	With	BL68-831
	G1 1/4	—	0,4 ... 8	40	Manual	Oil fog	Bracket	With	With	BL68-A31
	G1 1/2	—	0,4 ... 8	40	Manual	Oil fog	Bracket	With	With	BL68-B32
	G3/4	—	0,4 ... 8	40	Manual	Oil fog	Bracket	With	Without	BL68-625
	G1	Basic	0,4 ... 8	40	Manual	Micro fog	Bracket	With	Without	BL68-825
	G1 1/4	—	0,4 ... 8	40	Manual	Micro fog	Bracket	With	Without	BL68-A25
	G1 1/2	—	0,4 ... 8	40	Manual	Micro fog	Bracket	With	Without	BL68-B26
	G3/4	—	0,4 ... 8	40	Manual	Oil fog	Bracket	With	Without	BL68-635
	G1	Basic	0,4 ... 8	40	Manual	Oil fog	Bracket	With	Without	BL68-835
	G1 1/4	—	0,4 ... 8	40	Manual	Oil fog	Bracket	With	Without	BL68-A35
	G1 1/2	—	0,4 ... 8	40	Manual	Oil fog	Bracket	With	Without	BL68-B36

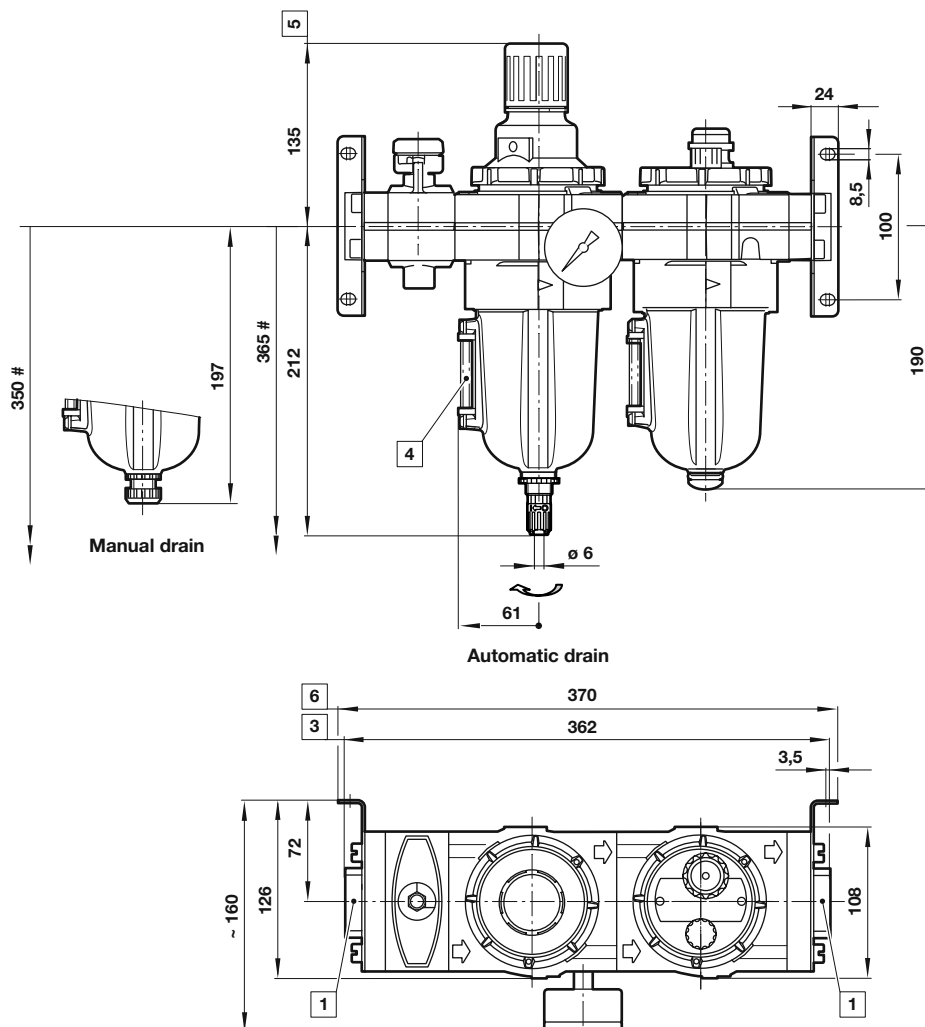
Accessories

	3/2 Shut-off valve Threaded inlet only	Threaded outlet only	Bracket mounting
			
Thread			
G3/4	T68H-6GB-B2N	T68H-6GC-B2N	18-001-979
G1	T68H-8GB-B2N	T68H-8GC-B2N	18-001-979
G1 1/4	T68H-AGB-B2N	T68H-AGC-B2N	18-001-978
G1 1/2	T68H-BGB-B2N	T68H-BGC-B2N	18-001-972
3/4 PTF	T68H-6AB-B2N	T68H-6AC-B2N	18-001-979
1 PTF	T68H-8AB-B2N	T68H-8AC-B2N	18-001-979
1 1/4 PTF	T68H-AAB-B2N	T68H-AAC-B2N	18-001-978
1 1/2 PTF	T68H-BAB-B2N	T68H-BAC-B2N	18-001-972

Tamper resistant cap & seal wire	Porting block	Padlock with two keys
		
4355-51	18-026-986 (G1/4 & G1/2) 18-026-983 (1/4 & 1/2 NPT)	0613633 (brass)

Dimensions with shut-off valve

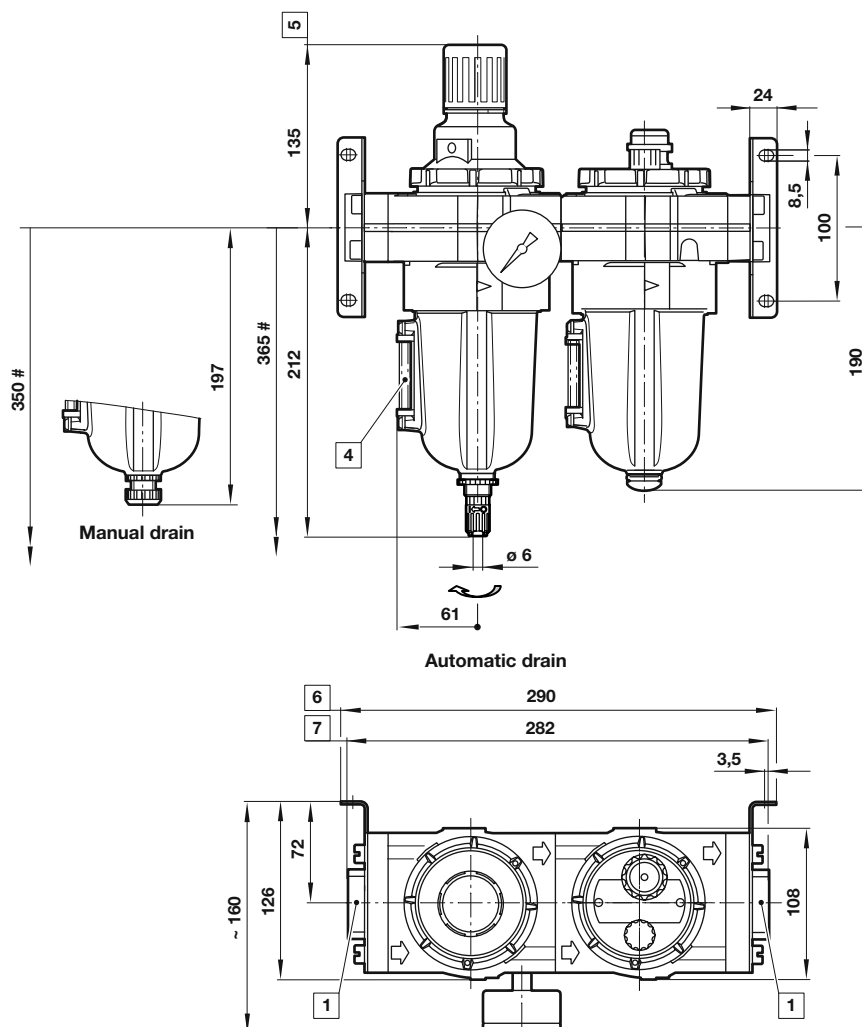
Dimensions in mm
 Projection/First angle



- # Minimum clearance required to remove bowl
- 1 Main ports 3/4", 1", 1 1/4" or 1 1/2"
 - 3 Plus 10 mm for ports 1 1/4" or 1 1/2"
 - 4 Sight glass
 - 5 Reduces by 4 mm with knob in locked position
 - 6 Plus 10 mm for ports 1 1/4"

Dimensions without shut-off valve

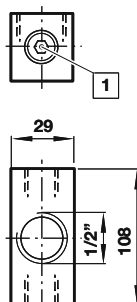
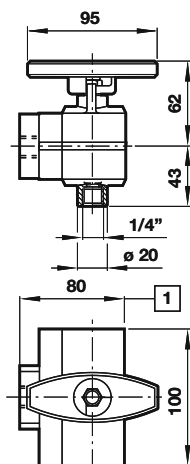
Dimensions in mm
Projection/First angle



- # Minimum clearance required to remove bowl
- 1 Main ports 3/4", 1", 1 1/4" or 1 1/2"
 - 4 Sight glass
 - 5 Reduces by 4 mm with knob in locked position
 - 6 Plus 10 mm for ports 1 1/4"
 - 7 Plus 10 mm for ports 1 1/4" and 5 mm for 1 1/2"

3/2 Shut-off valve

Porting block



1 For 1 1/2" ported yokes add 5 mm

1 Two additional plugged 1/4" ports

Warning

These products are intended for use in industrial compressed air systems only. Do not use these products where pressures and temperatures can exceed those listed under »**Technical features/data**«.

Before using these products with fluids other than those specified, for non-industrial applications, life-support systems or other applications not within published specifications, consult
IMI Precision Engineering, IMI International s.r.o.

Through misuse, age, or malfunction, components used in fluid power systems can fail in various modes. The system designer is warned to consider the failure modes of all component parts used in fluid power systems and to provide adequate safeguards to prevent personal injury or damage to equipment in the event of such failure.

System designers must provide a warning to end users in the system instructional manual if protection against a failure mode cannot be adequately provided.

System designers and end users are cautioned to review specific warnings found in instruction sheets packed and shipped with these products.

- > **Port size: 1/4" ... 1/2"**
(ISO G/PTF)
- > **Excelon design allows**
in-line installation or
modular installation
with other Excelon
products
- > **High efficiency water**
and particle removal
- > **Quick release bayonet**
bowl
- > **Push to lock**
adjusting knob with
tamper resistant
accessory



Technical features

Medium:

Compressed air only

Maximum operating pressure:

Transparent bowl: 10 bar (145 psi)

Pressure range:

0,3 ... 10 bar (4 ... 145 psi)

Filter element:

40 µm standard

Port size:

G1/4, G3/8, G1/2

Gauge port:

Rc 1/8

Relieving:

Standard

Drain:

Manual or automatic

Automatic drain operating conditions (float operated):

Bowl pressure required to close drain: > 0,3 bar (5 psi)

Bowl pressure required to open drain: ≤ 0,2 bar (2.9 psi)

Minimum air flow required to close drain: 0,1 dm³/s (0.2 scfm)

Manual operation: depress pin inside drain outlet to drain bowl

Ambient/Media temperature:

Transparent bowl:

-20 ... +50°C (-4 ... +122°F)

Air supply must be dry enough to avoid ice formation at temperatures below +2°C (+35°F).

Materials:

Body: Die cast aluminium

Bowl: Transparent PC

Elastomers: CR & NBR

Please contact IMI Norgren for following options:

Operation pressure:

Metal bowl: 17 bar (246 psi)

Pressure range:

0,3 ... 4 bar (4 ... 58 psi)

0,7 ... 17 bar (2 ... 250 psi)

Port size:

1/4 PTF, 3/8 PTF 1/2 PTF

Filter element:

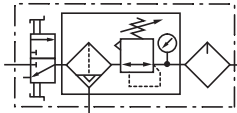
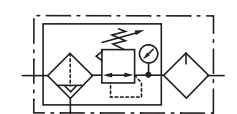
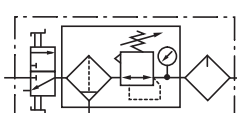
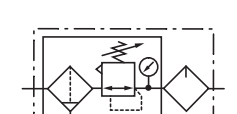

5 µm

Ambient/Media temperature:








Metal bowl:

-34 ... +80°C (-30 ... +176°F)

Technical data BL73 (Filter/Regulator, Lubricator and Gauge) - standard models




Symbol	Port size	Size	Pressure range (bar)	Element (µm)	Drain	Lubricator	Mounting	Shut-off valve	Model
	G1/4	—	0,3 ... 10	40	Automatic	Micro fog	Quickclamp with wall bracket®	With	BL73-201G
	G3/8	Basic	0,3 ... 10	40	Automatic	Micro fog	Quickclamp with wall bracket®	With	BL73-301G
	G1/2	—	0,3 ... 10	40	Automatic	Micro fog	Quickclamp with wall bracket®	With	BL73-401G
	G1/4	—	0,3 ... 10	40	Automatic	Oil fog	Quickclamp with wall bracket®	With	BL73-211G
	G3/8	Basic	0,3 ... 10	40	Automatic	Oil fog	Quickclamp with wall bracket®	With	BL73-311G
	G1/2	—	0,3 ... 10	40	Automatic	Oil fog	Quickclamp with wall bracket®	With	BL73-411G
	G1/4	—	0,3 ... 10	40	Automatic	Micro fog	Quickclamp with wall bracket®	Without	BL73-205G
	G3/8	Basic	0,3 ... 10	40	Automatic	Micro fog	Quickclamp with wall bracket®	Without	BL73-305G
	G1/2	—	0,3 ... 10	40	Automatic	Micro fog	Quickclamp with wall bracket®	Without	BL73-405G
	G1/4	—	0,3 ... 10	40	Automatic	Oil fog	Quickclamp with wall bracket®	Without	BL73-215G
	G3/8	Basic	0,3 ... 10	40	Automatic	Oil fog	Quickclamp with wall bracket®	Without	BL73-315G
	G1/2	—	0,3 ... 10	40	Automatic	Oil fog	Quickclamp with wall bracket®	Without	BL73-415G
	G1/4	—	0,3 ... 10	40	Manual	Micro fog	Quickclamp with wall bracket®	With	BL73-221G
	G3/8	Basic	0,3 ... 10	40	Manual	Micro fog	Quickclamp with wall bracket®	With	BL73-321G
	G1/2	—	0,3 ... 10	40	Manual	Micro fog	Quickclamp with wall bracket®	With	BL73-421G
	G1/4	—	0,3 ... 10	40	Manual	Micro fog	Quickclamp with wall bracket®	With	BL73-231G
	G3/8	Basic	0,3 ... 10	40	Manual	Oil fog	Quickclamp with wall bracket®	With	BL73-331G
	G1/2	—	0,3 ... 10	40	Manual	Oil fog	Quickclamp with wall bracket®	With	BL73-431G
	G1/4	—	0,3 ... 10	40	Manual	Micro fog	Quickclamp with wall bracket®	Without	BL73-225G
	G3/8	Basic	0,3 ... 10	40	Manual	Micro fog	Quickclamp with wall bracket®	Without	BL73-325G
	G1/2	—	0,3 ... 10	40	Manual	Micro fog	Quickclamp with wall bracket®	Without	BL73-425G
	G1/4	—	0,3 ... 10	40	Manual	Oil fog	Quickclamp with wall bracket®	Without	BL73-235G
	G3/8	Basic	0,3 ... 10	40	Manual	Oil fog	Quickclamp with wall bracket®	Without	BL73-335G
	G1/2	—	0,3 ... 10	40	Manual	Oil fog	Quickclamp with wall bracket®	Without	BL73-435G

Accessories

Quikclamp®  Page 3 4314-51	Quikclamp with wall bracket®  Page 3 4314-52	Tamper resistant kit  4355-51	
Quikmount pipe adaptor *1)  Page 3 G1/4: 4315-09 G3/8: 4315-10 G1/2: 4315-11	Porting block with three alternative 1/4" ports  Page 3 G1/4: 4316-52 1/4 PTF: 4316-50	2/2 Shut-off valves (for full technical specification see datasheet 8.180.600)  Page 4 G1/4: T73B-2GA-P1N G3/8: T73B-3GA-P1N G1/2: T73B-4GA-P1N	3/2 Shut-off valves (for full technical specification see datasheet 8.180.600)  Page 4 G1/4: T73T-2GA-P1N G3/8: T73T-3GA-P1N G1/2: T73T-4GA-P1N

*1) Please use a Quikmount pipe adaptor if the Quikclamp be mounted at inlet or outlet side.


Pressure switch

Porting block for pressure switch  Page 3 0523110000000000	Pressure switch (0,5 ... 8 bar)  0881300000000000	Padlock (brass) with two keys *1)  0613633000000000
---	--	--

*1) for shut-off valves

Padlock

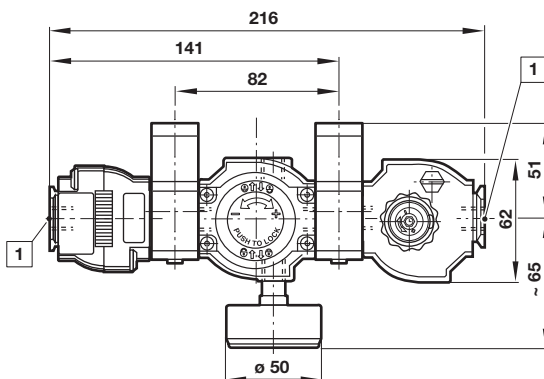
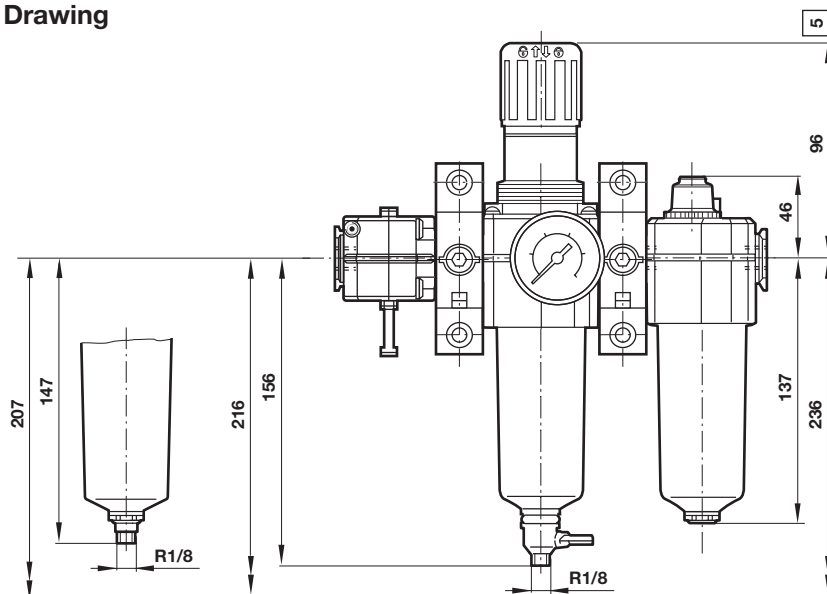
Gauge

Center back connection, white face (for full technical specification see datasheet 8.900.900) 					
Pressure range bar *1	Mpa	psi	Ø	Thread size	Model
0 ... 4	0 ... 0,4	0 ... 58	50 mm	R1/8	18-015-011
0 ... 10	0 ... 1	0 ... 145	50 mm	R1/8	18-015-013
0 ... 25	0 ... 2,5	0 ... 362	50 mm	R1/8	18-015-014

*1) primary scale

Drawing

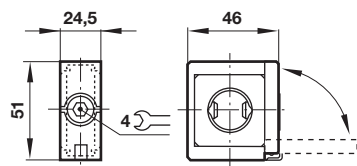
Dimensions in mm
 Projection/First angle



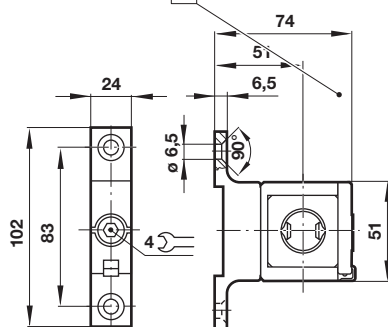
- # Minimum clearance required to remove bowl
- 1 Main ports 1/4", 3/8" or 1/2"
 - 3 Transparent bowl
 - 5 Reduces by 4 mm with knob in locked position

Accessories

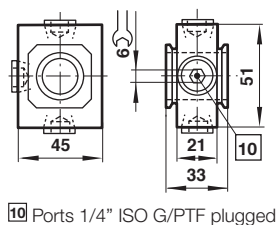
Quikclamp®



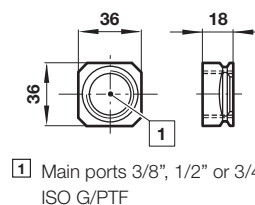
Quikclamp® with wall bracket



Porting block



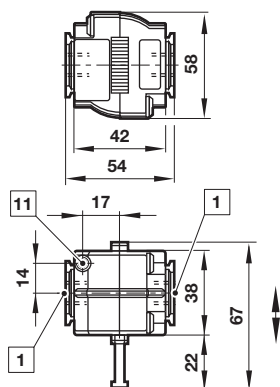
Pipe adapter



- 1 Main ports 3/8", 1/2" or 3/4" ISO G/PTF

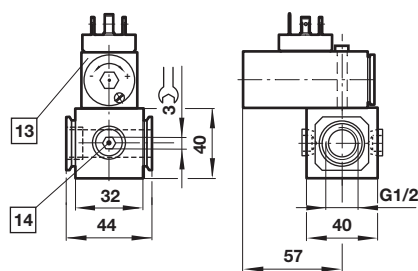
- 10 Ports 1/4" ISO G/PTF plugged

Shut-off valves



- 1 Main ports 1/4", 3/8" or 1/2" ISO G/PTF
- 11 Exhaust port M5 at 3/2 valve only

Porting block for pressure switch



- 13 Pressure switch is not in scope of delivery
- 14 Alternative G1/4 ports plugged

Dimensions in mm
 Projection/First angle



Warning

These products are intended for use in industrial compressed air systems only. Do not use these products where pressures and temperatures can exceed those listed under

»Technical features/data«.

Before using these products with fluids other than those specified, for non-industrial applications, life-support systems or other applications not within published specifications, consult IMI Precision Engineering, Norgren GmbH. Through misuse, age, or malfunction, components used in fluid power systems can fail in various modes.

The system designer is warned to consider the failure modes of all component parts used in fluid power systems and to provide adequate safeguards to prevent personal injury or damage to equipment in the event of such failure.

System designers must provide a warning to end users in the system instructional manual if protection against a failure mode cannot be adequately provided.

System designers and end users are cautioned to review specific warnings found in instruction sheets packed and shipped with these products.

BL84 -Filter/regulator - Lubricator Combination Units Excelon® Plus Modular System

- > Port size: 3/8" ... 3/4" (ISO G/PTF)
- > Unique Quikclamp connection system offers full modularity
- > 40 micron particle and high efficiency water removal (> 98%)
- > Double safety lock on bowl
- > Integrated gauge
- > Shut off valve, Regulator & Filter Regulator with tamper resistance feature.
- > Metal bowl with prismatic liquid level indicator
- > Light weight polycarbonate bowl
- > Easy to read flush mounted integrated pressure gauge as standard
- > All round (360°) visibility of sightdome for ease of drip rate setting



Technical features

Medium:

Compressed air only

Maximum supply pressure:

Polycarbonate bowl: 10 bar (145 psi)

Metal bowl: 20 bar (290 psi)

Outlet pressure ranges:

0,3 ... 10 bar (4 ... 145 psi),

Filter element:

40 µm

Port size:

G3/8, G1/2, G3/4,

3/8 PTF, 1/2 PTF, 3/4 PTF

Gauge:

Integrated as standard

Diaphragm Type:

Relieving

Drain:

Manual or automatic

Automatic drain operating conditions (float operated):

Bowl pressure required to close drain: > 0,35 bar (5 psi)

Bowl pressure required to open drain: ≤ 0,2 bar (2.9 psi)

Minimum air flow required to close drain: 1 dm³/s (2 scfm)

Ambient/Media temperature:

Polycarbonate bowl:

-10 ... +60°C (+14 ... +140°F)

Metal bowl:

-20 ... +65°C (-4 ... +149°F)

Air supply must be dry enough to avoid ice formation at temperatures below +2°C (+35°F).

Materials:

Body: Die cast aluminium

Body covers: ABS

Bonnet: Acetal

Valve: PP

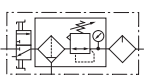
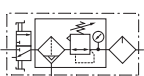
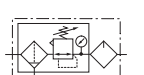

Transparent Bowl : Polycarbonate with Polypropylene Guard.

Metal Bowl: Die cast Aluminium with PA liquid level indicator lens

Filter element: sintered PP

Bowl 'o'- ring: Chloroprene
Elastomers: NBR

Technical data BL84 - standard models

Symbol	Port size	Shut off valve	Drain	Lubricator type	Weight (kg)	Model *1)
	G3/8	With	Manual	Microfog	1,65	BL84-321G
	G1/2	With	Manual	Microfog	1,65	BL84-421G
	G3/4	With	Manual	Microfog	1,65	BL84-621G
	G3/8	With	Auto	Microfog	1,65	BL84-301G
	G1/2	With	Auto	Microfog	1,65	BL84-401G
	G3/4	With	Auto	Microfog	1,65	BL84-601G
	G3/8	Without	Manual	Microfog	1,15	BL84-325G
	G1/2	Without	Manual	Microfog	1,15	BL84-425G
	G3/4	Without	Manual	Microfog	1,15	BL84-625G
	G3/8	Without	Auto	Microfog	1,15	BL84-305G
	G1/2	Without	Auto	Microfog	1,15	BL84-405G
	G3/4	Without	Auto	Microfog	1,15	BL84-605G

*1) All models shown here are supplied with integrated gauge applicable for flow direction left to right.

With flow direction right to left please use the online configurator www.norgren.com/air-preparation-configurator or contact Norgren

Option selector *1)
BL84-★★★★

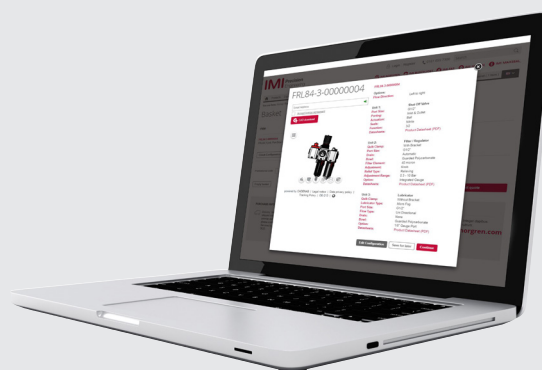
Port size	Substitute
3/8"	3
1/2"	4
3/4"	6
Units	Substitute
Filter/Regulator w. auto drain, Micro fog lubricator, Polycarbonate bowls	0
Filter/Regulator w. auto drain, Oil fog lubricator, Polycarbonate bowls	1
Filter/Regulator w. manual drain, Micro fog lubricator, Polycarbonate bowls	2
Filter/Regulator w. manual drain, Oil fog lubricator, Polycarbonate bowls	3
Filter/Regulator w. auto drain, Micro fog lubricator, Metal bowls	5
Filter/Regulator w. auto drain, Oil fog lubricator, Metal bowls	6
Filter/Regulator w. manual drain, Micro fog lubricator, Metal bowls	7
Filter/Regulator w. manual drain, Oil fog lubricator, Metal bowls	8

Thread form	Substitute
PTF	A
ISO G parallel (standard)	G
Accessories	Substitute
Shutt-off valve & gauge & brackets	1
Gauge & bracket	5

*1) All models shown here are applicable for flow direction left to right. With flow direction right to left please use the online configurator www.norgren.com/air-preparation-configurator or contact Norgren

In addition to the standard box set units shown on this data sheet, further combinations can be configured using our online Air Preparation configurator:

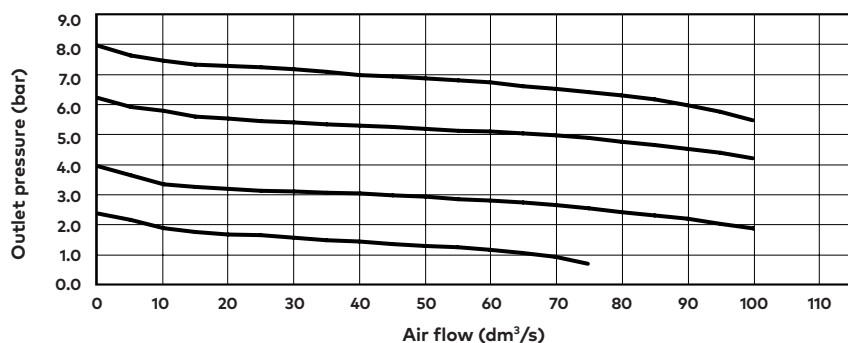
www.norgren.com/air-preparation-configurator



Flow characteristics

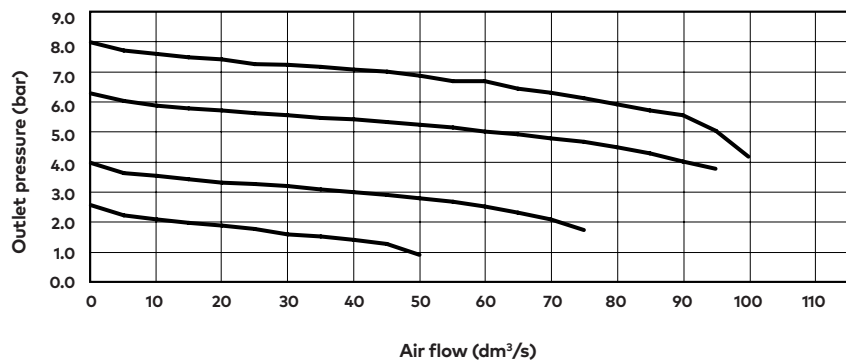
Inlet pressure: 10 bar (145 psi)

Port size: 1/2", 40 µm element



Inlet pressure: 10 bar (145 psi)

Port size: 3/8", 40 µm element



Accessories

Wall mounting bracket



Page 6

840024-50KIT

Quikclamp®



Page 6

840014-51KIT

Quikclamp® with bracket assembled



Page 6

840014-52KIT

Hybrid Quikclamp® *1



Page 6

840014-61

Hybrid Quikclamp® with bracket assembled *1

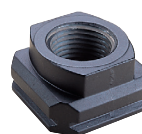


Page 6

840014-62

*1) To connect new Excelon Plus to old Excelon 74/73 units.
Having the same hole centres as 74 series mounting bracket.
A Quikclamp adds 13.6 mm to the overall width of a combination unit

Port Adaptors



Page 7

3/8 PTF 840015-02KIT

1/2 PTF 840015-03KIT

3/4 PTF 840015-04KIT

G3/8 840015-10KIT

G1/2 840015-11KIT

G3/4 840015-12KIT

Pressure sensing block 1/4 PTF



Page 6

840016-50KIT

Pressure sensing block G1/4



Page 6

840016-51KIT

Full flow porting block 3/4" PTF



Page 6

840028-50KIT

Full flow porting block G3/4



Page 6

840028-53KIT

Full flow porting block 3/4" PTF



Page 6

840028-50KIT

Full flow porting block G3/4



Page 6

840028-53KIT

Pressure switch interface block (18D pressure switch) G1/4



Page 8

0337717000000000

Pressure switch 18D (0,5 ... 8bar) *1



Page 8

0881300

Digital pressure switch 51D (-1 ... 10 bar) *2



Page 8

0860810

Electronic Pressure Sensor – stand alone version *3



Q84G

IO-Link cables

Connection cable M8x1 for intergated digital pressure switch



Description	Cable length (m)	Model
M8 female to M12 male	0,6	NC-084FS-124MS-A
	1,0	NC-084FS-124MS-1
	2,0	NC-084FS-124MS-2
	5,0	NC-084FS-124MS-5
M8 female to free end	3,0	NC-084FS-00000-3

Padlock

Padlock



840055-01KIT

Lockout device



840055-02KIT

Silencer

**Porous plastic silencer *3)
G1/4**



M/S2

**Plastic silencer *3)
G1/4**



0014600000000000

**Sinter bronze silencer *3)
1/4 PTF**



MS002A

**Sinter bronze silencer *3)
G1/4**



T40C2800

*3) Max. pressure of silencers listed in this data sheet : 10bar.
For pressure higher than 10bar please contact Norgren

Maintenance/Service

**Filter cartridge
40 micron**



840038-51KIT

**Auto drain kit with
metal Nut - Imperial**



6000-61KIT

**Auto drain kit with
metal Nut - Metric**



6000-60KIT

**R84 / B84
Elastomer Kit**



FRLB84-KIT

Lubricator sight dome kit



Micro fog (red) 840055-50KIT

Oil fog (green) 840055-51KIT

Spare parts

**Filter Bowl (Guarded Poly bowl
with auto drain 6 mm PIF)**



840025-51KIT

**Filter Bowl (Guarded Poly
bowl with manual drain)**



840025-50KIT

**Filter Bowl (Metal with S/
Glass & auto drain, 6 mm PIF)**



840003-51KIT

**Filter Bowl (Metal with S/
Glass & manual drain)**



840003-50KIT

**Filter Bowl (Guarded Poly
bowl with auto drain, 1/4 PIF)**



840025-53KIT

**Filter Bowl (Metal with S/
Glass & auto drain, 1/4 PIF)**

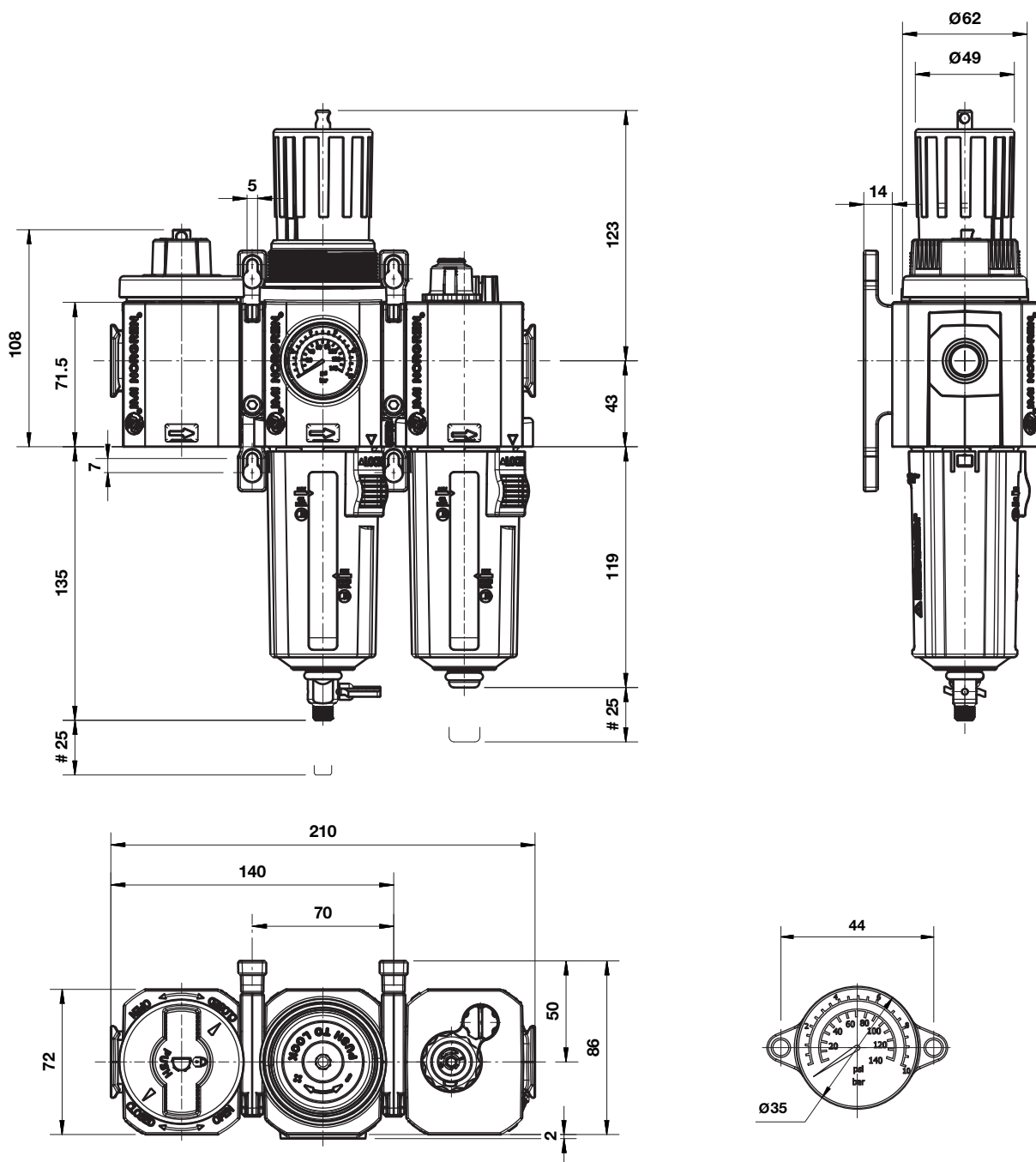


840003-56KIT

Dimensions

Shut-off valve, Filterregulator and Lubricator

Dimensions in mm
Projection/First angle

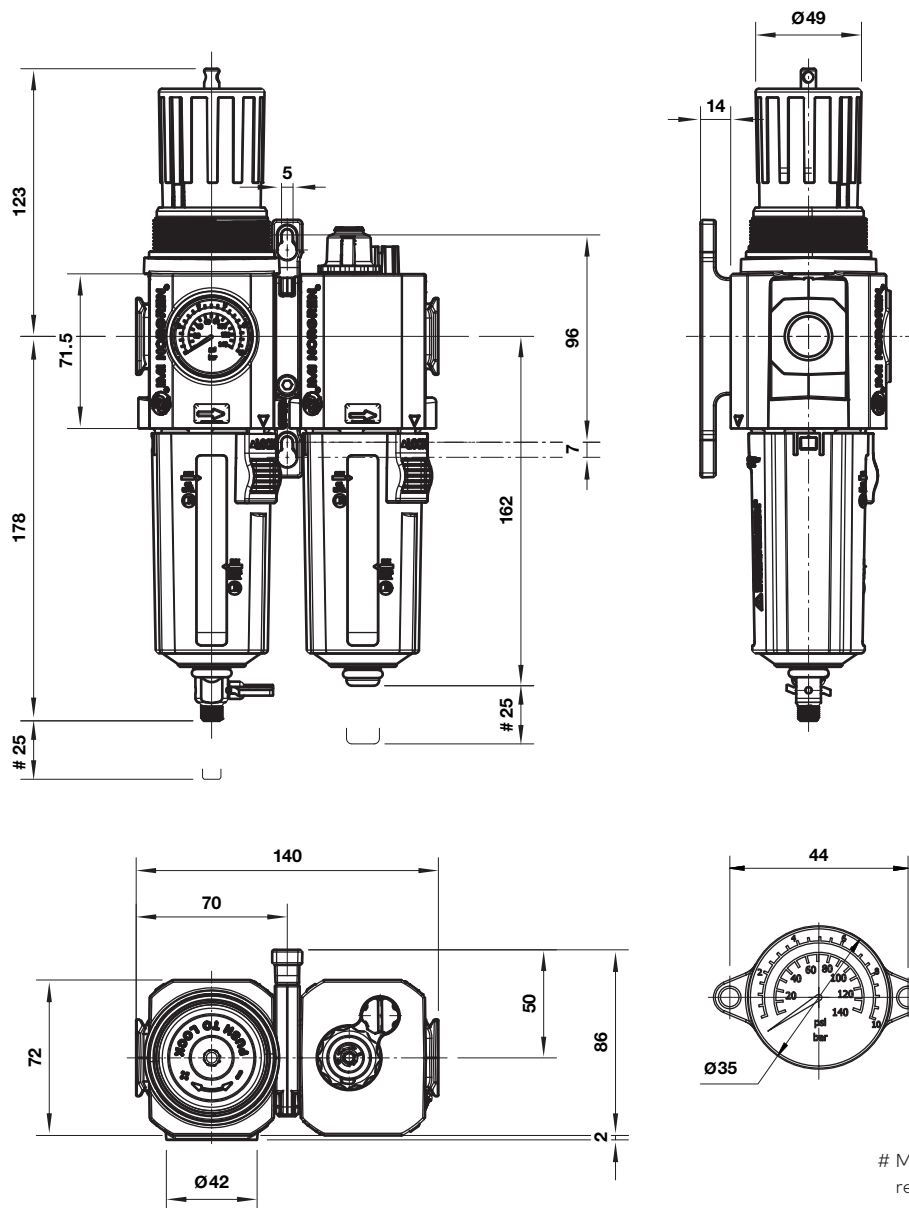


Minimum clearance for bowl removal

Dimensions

Filterregulator and Lubricator

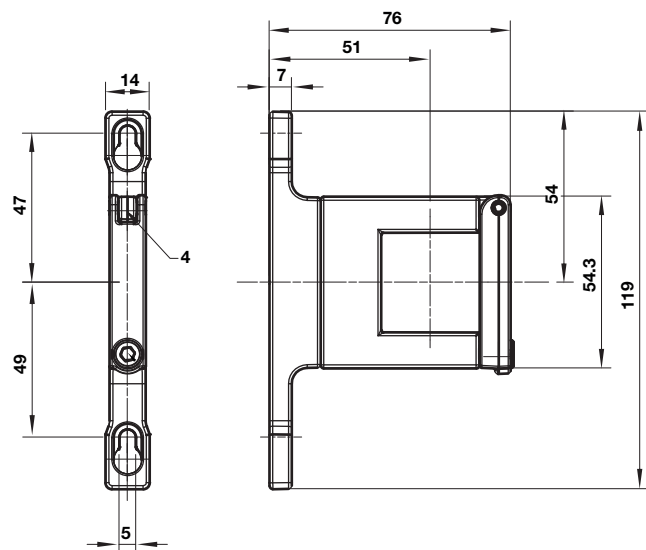
Dimensions in mm
Projection/First angle



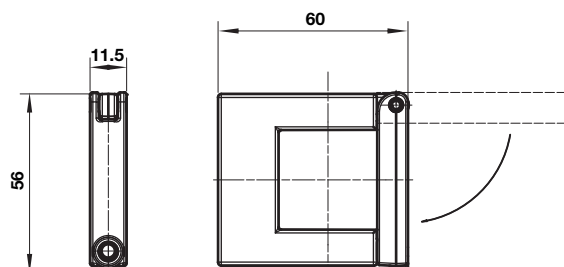
Minimum clearance for bowl removal

Accessories

Quikclamp® with wall bracket



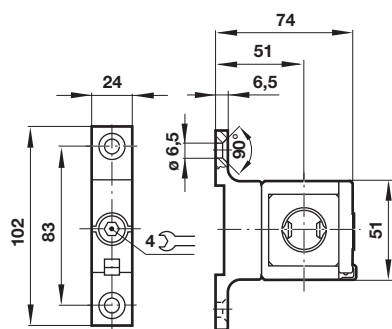
Quikclamp®



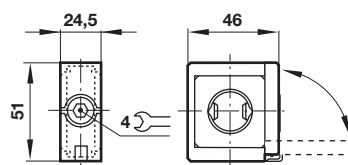
Dimensions in mm
Projection/First angle



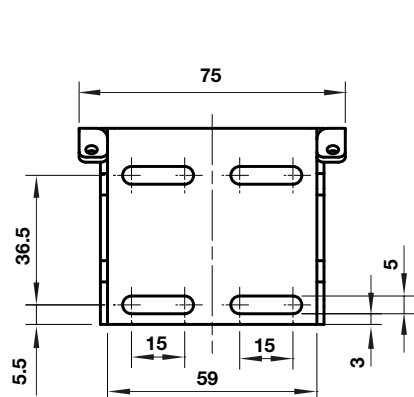
Hybrid-Quikclamp® with wall bracket



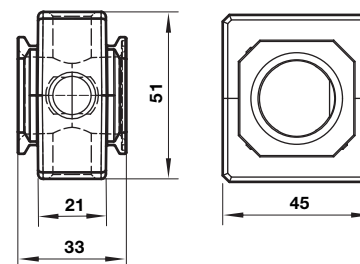
Hybrid-Quikclamp®



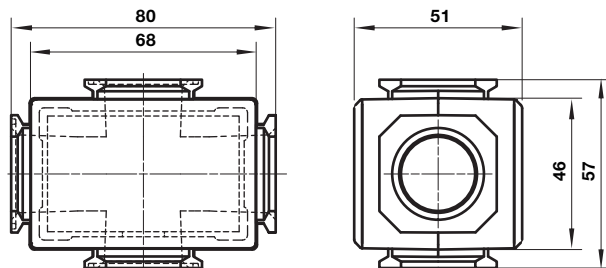
Mounting bracket



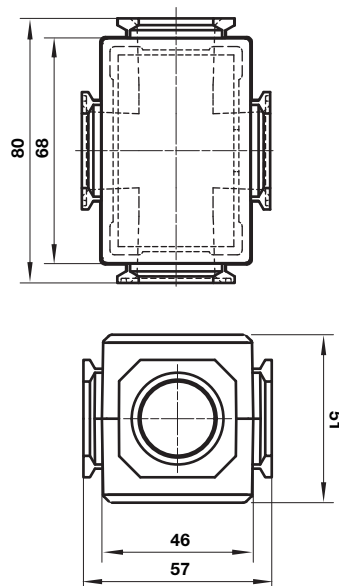
Pressure sensing block



Full flow porting block horizontal



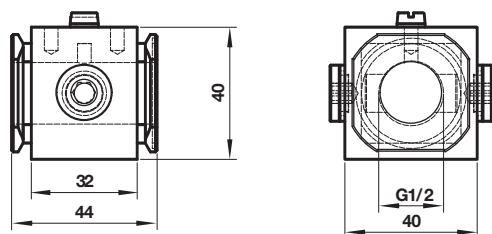
Full flow porting block vertical



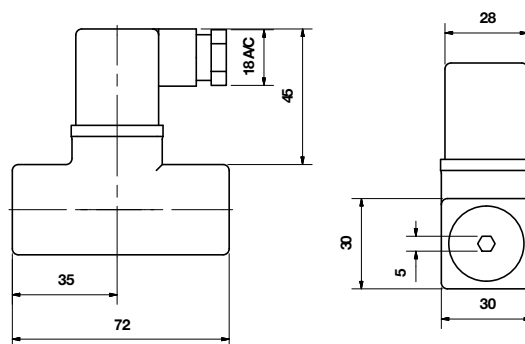
Dimensions in mm
Projection/First angle



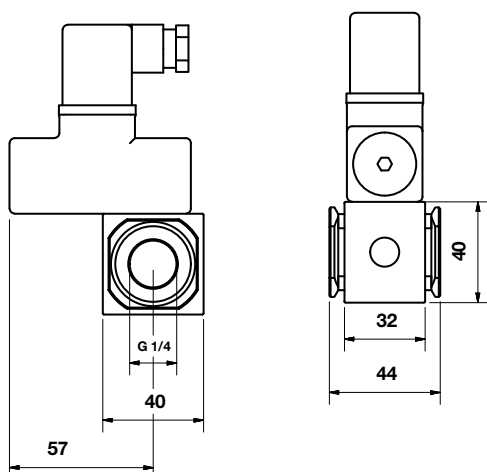
Porting block for 18D pressure switch



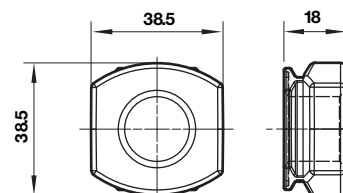
18D Pressure switch



18D Porting block and 18D assembled

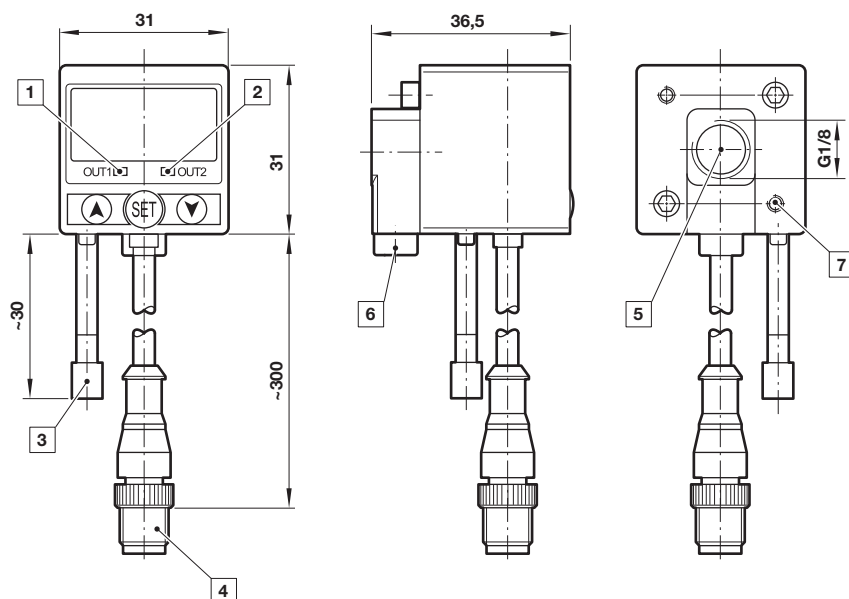


Pipe adaptor



51D Pressure switch - digital

Dimensions in mm
Projection/First angle



Warning

These products are intended for use in industrial compressed air systems only. Do not use these products where pressures and temperatures can exceed those listed under »**Technical features/data**«.

Before using these products with fluids other than those specified, for non-industrial applications, life-support systems or other applications not within published specifications, consult Norgren Ltd.

Through misuse, age, or malfunction, components used in fluid power systems can fail in various modes.

The system designer is warned to consider the failure modes of all component parts used in fluid power systems and to provide adequate safeguards to prevent personal injury or damage to equipment in the event of such failure.

System designers must provide a warning to end users in the system instructional manual if protection against a failure mode cannot be adequately provided.

System designers and end users are cautioned to review specific warnings found in instruction sheets packed and shipped with these products.

Boxed sets are an excellent and attractive marketing tool for counter displays.

True modularity with Excelon® Quikclamp® connections

Quick release bayonet bowl

Lubricator flow sensor provides a nearly constant oil/air ratio over a wide range of air flows

All around (360°) visibility of the lubricator sight-feed dome simplifies installation and adjustment

Regulator balanced valve minimizes effect of variation in the inlet pressure on the outlet pressure



Boxed sets



BL72-201A

Technical data

Fluid:

Compressed air, neutral gases
 NOTE: Contact technical support for use with other media.

Maximum pressure:

Transparent bowl: 150 psig (10 bar)

Metal bowl (manual or automatic): 250 psig (17 bar)

Operating temperature*:

Transparent bowl: -30° to 125°F (-34° to 50°C)

Metal bowl:

-30° to 150°F (-34° to 65°C)

* Air supply must be dry enough to avoid ice formation at temperatures below 35°F (2°C).

Particle removal:

40 µm filter element

Materials

Body: zinc or aluminum

Bonnet: (72) acetal, (73) Zinc, (74) aluminum

Bowl:

(72) polycarbonate

(73, 74) aluminum

Metal bowl liquid level indicator

lens: transparent nylon

Sight-feed dome: transparent nylon

Element: sintered polypropylene

Elastomers: chloroprene, nitrile

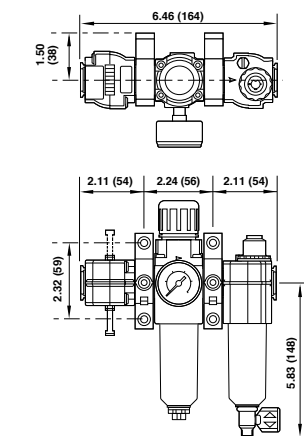
Other combinations are configurable. Please consult technical support for more information.

Ordering information

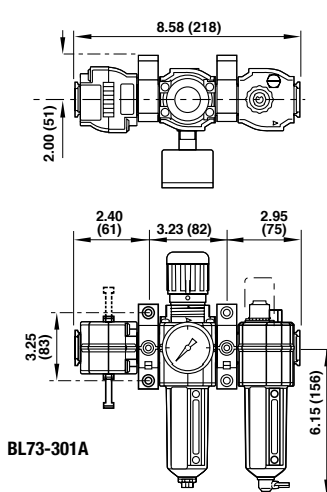
Models include PTF threads. Filter/Regulator (F/R) has knob adjustment, automatic drain, metal bowl with level indicator, 40 µm element, relieving diaphragm, and 150 psig (10 bar) regulating spring, and gauge. Lubricator (L) is a Micro-Fog model with 1/4 turn manual drain and metal bowl with level indicator. Shut off valve is included.

Boxed Set Combination Units

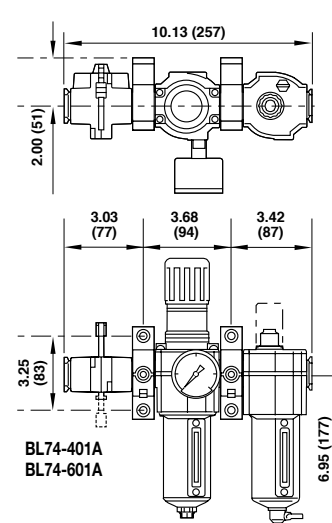
Boxed Set	Port size	Model
Filter/Regulator-Lubricator-Lockout valve-gauge-brackets	1/4"	BL72-201A
Filter/Regulator-Lubricator-Lockout valve-gauge-brackets	3/8"	BL73-301A
Filter/Regulator-Lubricator-Lockout valve-gauge-brackets	1/2"	BL74-401A
Filter/Regulator-Lubricator-Lockout valve-gauge-brackets	3/4"	BL74-601A



BL72-201A



BL73-301A



BL74-401A
BL74-601A

Dimensions in inches (mm)