

- > **Port size: 1/4" ... 3/4"**
(ISO G/PTF)
- > **High efficiency water removal**
- > **Diaphragm and balanced valve design ensure good regulation characteristics**
- > **Non-rising adjusting knob has snap-action lock**
- > **Quick release bayonet bowl**

Technical features

Medium:

Compressed air only

Maximum operating pressure:
17 bar (246 psi)

Pressure range:

(standard)

0,3 ... 10 bar (4 ... 145 psi)

(optional)

0,4 ... 4 bar (5 ... 58 psi),
0,7 ... 17 bar (10 ... 246 psi)

Filter element:

5 or 40 µm

Port sizes:

1/4", 3/8", 1/2" or 3/4"

Gauge port:

1/8 PTF with PTF main ports

Rc1/8 with ISO G main ports

Drain:

Manual or automatic

Automatic drain conditions:

Pressure to close drain:

> 0,3 bar (4.3 psi)

Pressure to open drain:

< 0,2 bar (2.9 psi)

Minimum air flow to close drain:

0,6 dm³/s (1.3 scfm)

Relieving:

With (standard)

Non-relieving (optional)

Bowl size:

0,2 litre (7 fluid oz)

Ambient/Media temperature:

-20° ... +80°C (-4° ... +176°F)

Version with gauge:

-20° ... +65°C (-4° ... +149°F)

Air supply must be dry enough to avoid ice formation at temperatures below +2°C (+35°F).

Materials:

Body and yoke: Zinc alloy

Connection piece: Aluminium

Metal bowl: Aluminium

Prismatic liquid level indicator:

Grilamid

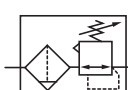
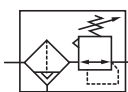
Filter element: Sintered plastic

Adjusting knob: Acetal resin

Elastomers: NBR



Technical data, standard models

Symbol	Port size	Size	Pressure range (bar)	Filter element (µm)	Flow * (dm³/s)	Bowl	Drain	Weight (kg)	Model
	G1/4	—	0,3 ... 10	40	30	Metal	Manual	1,71	B64G-2GK-MD3-RMN
	G3/8	—	0,3 ... 10	40	76	Metal	Manual	1,69	B64G-3GK-MD3-RMN
	G1/2	Basic	0,3 ... 10	40	106	Metal	Manual	1,66	B64G-4GK-MD3-RMN
	G3/4	—	0,3 ... 10	40	106	Metal	Manual	2,02	B64G-6GK-MD3-RMN
	Without yoke	—	0,3 ... 10	40		Metal	Manual	1,24	B64G-NNK-MD3-RMN
	G1/4	—	0,3 ... 10	40	30	Metal	Automatic	1,71	B64G-2GK-AD3-RMN
	G3/8	—	0,3 ... 10	40	76	Metal	Automatic	1,69	B64G-3GK-AD3-RMN
	G1/2	Basic	0,3 ... 10	40	106	Metal	Automatic	1,66	B64G-4GK-AD3-RMN
	G3/4	—	0,3 ... 10	40	106	Metal	Automatic	2,02	B64G-6GK-AD3-RMN
	Without yoke	—	0,3 ... 10	40		Metal	Automatic	1,26	B64G-NNK-AD3-RMN

* Typical flow with 10 bar (145 psi) inlet pressure, and 6,3 bar (91 psi) set pressure and 1 bar (14.5 psi) drop from set.

Option selector

Port size	Substitute
1/4"	2
3/8 "	3
1/2 "	4
3/4"	6
Without yoke	N
Threads form	Substitute
PTF	A
ISO G (standard)	G
Without yoke (standard)	N
Adjustment	Substitute
Knob (standard)	K
T-bar (0,7 ... 17 bar)	T *2)
Drain	Substitute
Automatic	A
Manual	M

B64G-★-★-★-★D★-★-★-★

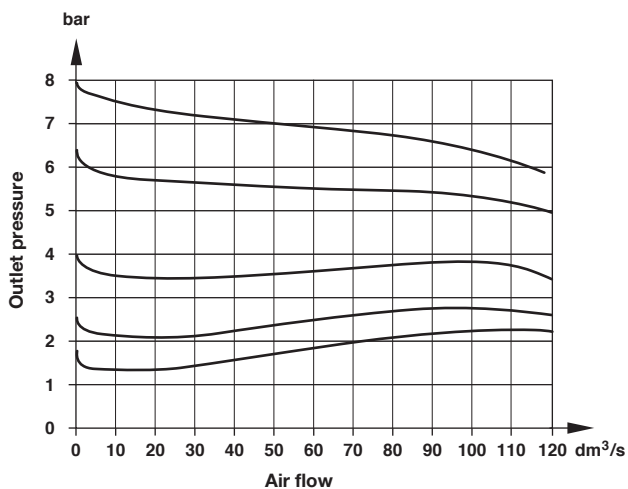
Gauge	Substitute
With	G
Without (standard)	N
Pressure range (bar) *1)	Substitute
0,3 ...10 (standard)	M
0,3 ... 4	F
0,7 ... 17	S *2)
Diaphragm	Substitute
Relieving (standard)	R
Non-relieving	N
Filter element	Substitute
5 µm	1
40 µm (standard)	3

*1) Outlet pressure can be adjusted to pressures in excess of and less than, those specified. Do not use these units to control pressures outside of the specified ranges.

*2) Units with 17 bar (246 psi) outlet pressure range are available only with the T-bar adjustment; therefore substitute T at the 7th digit and S at the 9th position.

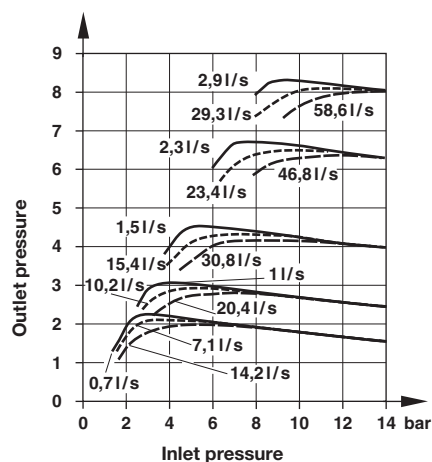
Flow characteristics

Inlet pressure: 10 bar, port size: 1/2", filter element: 40 µm
 Pressure range: 0,3 ... 10 bar



Regulating characteristics


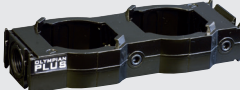




Port size: 1/2"










Accessories, service kit and gauges





Accessories

	Models with G-thread Single yoke	Double yoke	3/2 Shut-off valve Threaded inlet only	Threaded outlet only	End connector kit	Rear entry bracket kit
						
Thread	5				2	8
G1/4	Y64A-2GA-N1N	Y64A-2GA-N2N	T64T-2GB-P1N	T64T-2GC-P1N	—	—
G3/8	Y64A-3GA-N1N	Y64A-3GA-N2N	T64T-3GB-P1N	T64T-3GC-P1N	—	—
G1/2	Y64A-4GA-N1N	Y64A-4GA-N2N	T64T-4GB-P1N	T64T-4GC-P1N	74505-50	—
G3/4	Y64A-6GA-N1N*	Y64A-6GA-N2N*	T64T-6GB-P1N	T64T-6GC-P1N	74505-53	18-026-981
1/4 PTF	Y64A-2AA-N1N	Y64A-2AA-N2N	T64T-2AB-P1N	T64T-2AC-P1N	—	—
3/8 PTF	Y64A-3AA-N1N	Y64A-3AA-N2N	T64T-3AB-P1N	T64T-3AC-P1N	—	—
1/2 PTF	Y64A-4AA-N1N	Y64A-4AA-N2N	T64T-4AB-P1N	T64T-4AC-P1N	74505-52	—
3/4 PTF	Y64A-6AA-N1N*	Y64A-6AA-N2N*	T64T-6AB-P1N	T64T-6AC-P1N	74505-55	—

*These yokes are supplied with two end connector kits as standard.

Bracket mounting	Nut	Tamper resistant cap & seal wire	Yoke connector kit	Porting block	Adjustable pressure switch	Padlock with two keys
						
1	4	3	9			
74504-50	74502-89	4355-51	74503-51	74507-50	4346-99	0613633 (brass)

Service kit

Service kit, manual drain	Service kit, automatic drain
	
B64G-KITM05R (5 µm)	B64G-KITA05R (5 µm)
B64G-KITM40R (40 µm)	B64G-KITA40R (40 µm)

Gauges

Center back connection, white face (full technical specification see datasheet 8.900.900)



6

Pressure range	bar *1	MPa	psi	Ø	Thread size	Model
0 ... 4	0 ... 0,4	0 ... 0,4	0 ... 58	50 mm	R1/8	18-015-011
0 ... 10	0 ... 1	0 ... 1	0 ... 145	50 mm	R1/8	18-015-013
0 ... 25	0 ... 2,5	0 ... 2,5	0 ... 362	50 mm	R1/8	18-015-014

*1) primary scale

Center back connection, black face for North America (full technical specification see datasheet 8.900.900)



6

Pressure range	psig *1	bar	MPa	Ø	Thread size	Model
0 ... 60	0 ... 4	0 ... 0,4	0 ... 0,4	2" (50 mm)	1/8 NPT	18-015-202
0 ... 160	0 ... 11	0 ... 1,1	0 ... 1,1	2" (50 mm)	1/8 NPT	18-015-204
0 ... 400	0 ... 28	0 ... 2,8	0 ... 2,8	2" (50 mm)	1/8 NPT	18-015-206

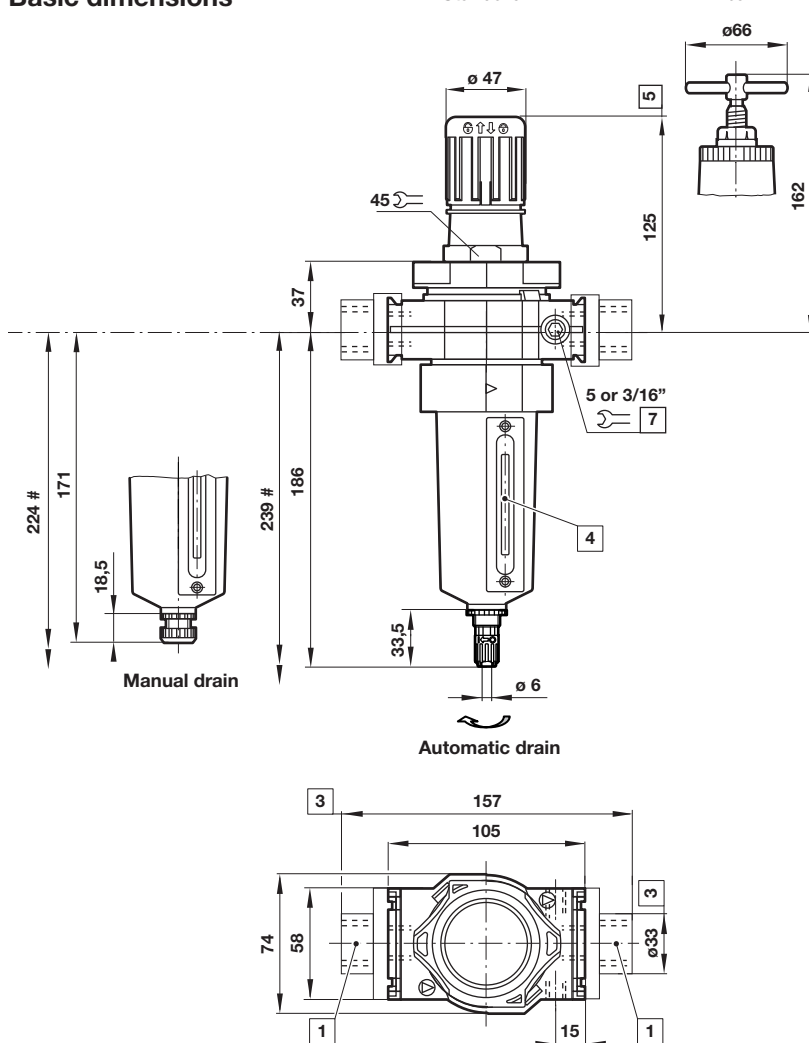
*1) primary scale

Basic dimensions

Standard

T-bar

Dimensions in mm
 Projection/First angle



Minimum clearance required to remove bowl

1 Main ports 1/4", 3/8", 1/2" or 3/4"

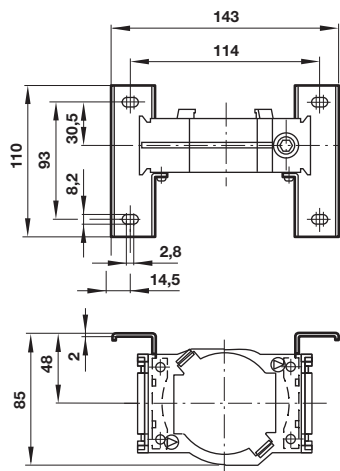
3 For main ports 3/4" only

4 Sight glass

5 Reduces by 4 mm with knob in locked position

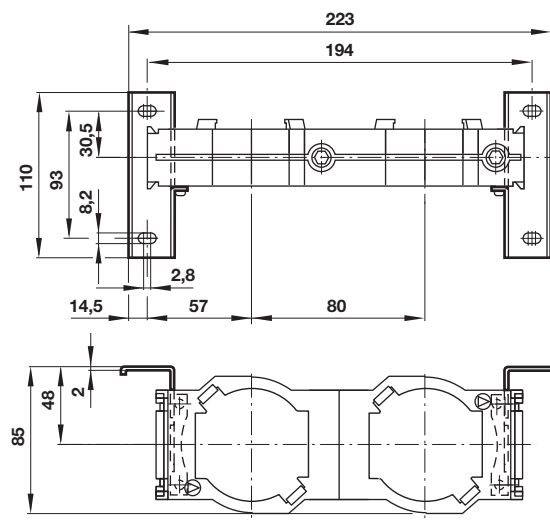
7 Gauge port 1/8"

Single yoke with bracket mounting

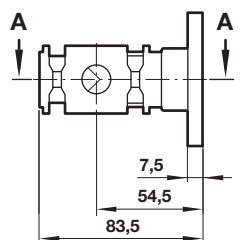
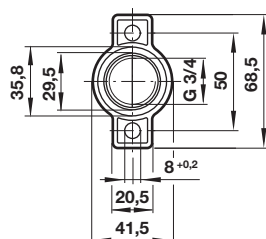


Double yoke with bracket mounting

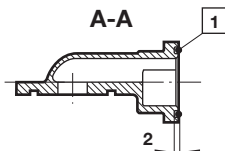
Dimensions in mm
Projection/First angle



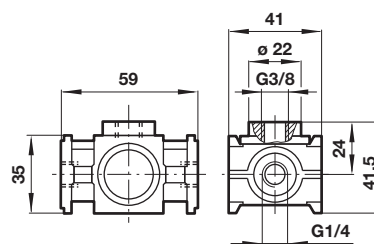
Rear entry bracket 18-026-981



1 'O'-ring (included in scope of supply of bracket)

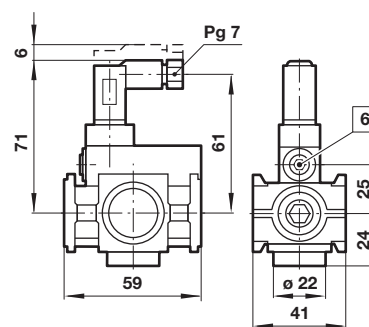


Porting block 74507-50



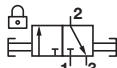
Adjustable pressure switch 4346-99

Voltage	24 V d.c./240 V a.c.
Current	0,5 A (d.c.); 5 A (a.c.)
Pressure range	2 ... 10 bar
Repeatability	2% of full set point range at 20°C
Average deadband	0,8 ... 1,7 bar
Electrical connection (corresponding to choosen coil)	EN 175301-803 - Form C, 15 mm
Degree of protection:	IP65
Adjustable	Standard
Material	Body: Aluminium, Elastomers: NBR

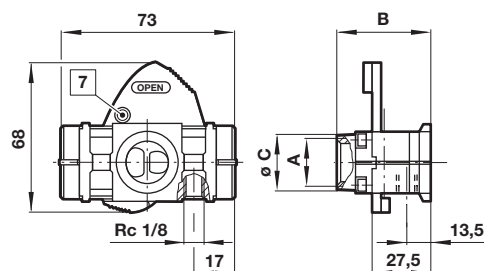


6 Adjusting screw

3/2 Shut-off valve

Symbol	A	B	ø C	Model
	G1/4	48	27	T64T-2G*-P1N
	G3/8	48	27	T64T-3G*-P1N
	G1/2	48	27	T64T-4G*-P1N
	G3/4	51	33	T64T-6G*-P1N

* B = Threaded inlet only, C = Threaded outlet only



7 Padlock hole ø7,5 mm

Warning

These products are intended for use in industrial compressed air systems only. Do not use these products where pressures and temperatures can exceed those listed under

»Technical features/data«.

Before using these products with fluids other than those specified, for non-industrial applications, life-support systems or other applications not within published specifications, consult IMI Precision Engineering, Norgren GmbH.
Through misuse, age, or malfunction, components used in fluid power systems can fail in various modes.

The system designer is warned to consider the failure modes of all component parts used in fluid power systems and to provide adequate safeguards to prevent personal injury or damage to equipment in the event of such failure.

System designers must provide a warning to end users in the system instructional manual if protection against a failure mode cannot be adequately provided.

System designers and end users are cautioned to review specific warnings found in instruction sheets packed and shipped with these products.

- > **Port size: 3/4" ... 1 1/2"**
(ISO G/PTF)
- > **High efficiency water removal**
- > **Diaphragm and balanced valve design ensure good regulation characteristics**
- > **Non-rising adjusting knob has snap-action lock**
- > **Standard options include non-relieving models, manual drain and alternative pressure ranges**



Technical features

Medium:

Compressed air only

Maximum operating pressure:

17 bar (246 psi)

Pressure range:

Standard

0,4 ... 8 bar (5 ... 116 psi)

Optional

0,3 ... 4 bar (4 ... 58 psi),

0,7 ... 17 bar (10 ... 246 psi)

Flow:

240 dm³/s; Port size: G1

Operating pressure: 6,3 bar (91 psi)

Δp: 0,5 bar (7 psi)

Filter element: 40 μm

Filter element:

40 μm, optional 5 μm

Port sizes:

3/4", 1", 1 1/4" or 1 1/2"

Gauge port:

1/8 PTF with PTF main ports

Rc1/8 with ISO G main ports

Drain:

Manual or automatic

Automatic drain conditions:

Pressure to close drain:

> 0,3 bar (4.3 psi)

Pressure to open drain:

< 0,2 bar (2.9 psi)

Minimum air flow to close drain:

0,6 dm³/s (1.3 scfm)

Relieving:

With (standard)

Non-relieving (optional)

Bowl size:

0,5 litre (17 fluid oz standard);

1 litre (34 fluid oz optional)

Standard compliances:

II 2G Ex h IIC T6 Gb

II 2D Ex h IIC T85° Db

Ambient/Media temperature:

-20° ... +80°C (-4° ... +176°F)

Version with gauge:

-20° ... +65°C (-4° ... +149°F)

Air supply must be dry enough to

avoid ice formation at temperatures below +2°C (+35°F).

Materials:

Body, bowl and yoke: Aluminium

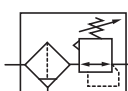
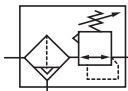
Liquid level indicator: Pyrex

Filter element: Sintered plastic

Adjusting knob: Acetal resin

Elastomers: NBR

Technical data, standard models

Symbol	Port size	Size	Pressure range (bar)	Filter element (μm)	Drain	Weight (kg)	Model
	G3/4	—	0,4 ... 8	40	Manual	3,29	B68G-6GK-MR3-RLN
	G1	Basic	0,4 ... 8	40	Manual	3,29	B68G-8GK-MR3-RLN
	G1 1/4	—	0,4 ... 8	40	Manual	3,35	B68G-AGK-MR3-RLN
	G1 1/2	—	0,4 ... 8	40	Manual	3,35	B68G-BGK-MR3-RLN
	Without yoke	—	0,4 ... 8	40	Manual	2,30	B68G-NNK-MR3-RLN
	G3/4	—	0,4 ... 8	40	Automatic	3,29	B68G-6GK-AR3-RLN
	G1	Basic	0,4 ... 8	40	Automatic	3,29	B68G-8GK-AR3-RLN
	G1 1/4	—	0,4 ... 8	40	Automatic	3,35	B68G-AGK-AR3-RLN
	G1 1/2	—	0,4 ... 8	40	Automatic	3,35	B68G-BGK-AR3-RLN
	Without yoke	—	0,4 ... 8	40	Automatic	2,30	B68G-NNK-AR3-RLN

Option selector

		B68★-★-★-★-★-★-★-★-★			
Version	Substitute			Gauge	Substitute
Long bowl (1 litre)	E			With	G
Standard bowl (0,5 litre)	G			Without (standard)	N
Port size	Substitute			Pressure range (bar)*1)	Substitute
3/4"	6			0,4 ... 8 (standard)	L
1"	8			0,3 ... 4	F
1 1/4"	A			0,7 ... 17	S *2)
1 1/2"	B			Diaphragm	Substitute
Without yoke	N			Relieving (standard)	R
Threads form	Substitute			Non-relieving	N
PTF or without yoke (N in 6th position), drain and gauge threads = PTF	A			Filter element	Substitute
ISO G parallel (standard)	G			5 µm	1
Without yoke (N in 6th position), drain and gauge threads = ISO Rc	N			40 µm (standard)	3
Adjustment	Substitute			Bowl	Substitute
Knob (standard)	K			0,5 l with liquid level indicator	R
T-bar (0,7 ... 17 bar (10 ... 246 psi))	T			1 l with liquid level indicator	U *3)
Drain	Substitute			0,5 l no liquid level indicator	M
Automatic	A			1 l no liquid level indicator	C *3
Manual	M				

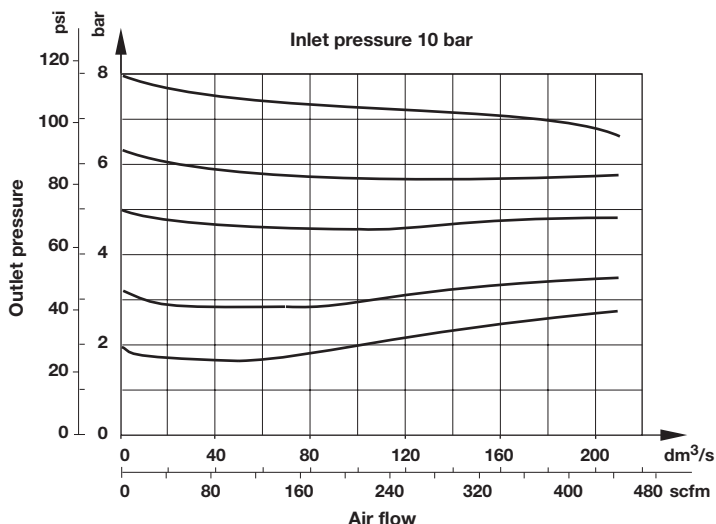
*1) Outlet pressure can be adjusted to pressures in excess of and less than, those specified. Do not use these units to control pressures outside of the specified ranges.

*2) Units with 17 bar (246 psi) outlet pressure range are available only with the T-bar adjustment; therefore substitute T at the 7th digit and S at the 9th position.

*3) Units with 1 litre bowl are available only with 'E' version only; therefore substitute E at the 4th digit and U or C at the 9th position.

Flow characteristics



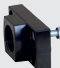




**Port size 1", 40 µm element,
Range 0,4 ... 8 bar**






Accessories, service kit and gauges





Accessories

	Single yoke	Double yoke	End connector kit	Single yoke non threads	3/2 Shut-off valve Threaded inlet only	Threaded outlet only	Bracket mounting
							
Thread	5	5	2	5			1
G3/4	Y68A-6GN-N1N	Y68A-6GN-N2N	5524-55	74785-98	T68H-6GB-B2N	T68H-6GC-B2N	18-001-979
G1	Y68A-8GN-N1N	Y68A-8GN-N2N	5524-52		T68H-8GB-B2N	T68H-8GC-B2N	18-001-979
G1 1/4	Y68A-AGN-N1N	Y68A-AGN-N2N	5523-52		T68H-AGB-B2N	T68H-AGC-B2N	18-001-978
G1 1/2	Y68A-BGN-N1N	Y68A-BGN-N2N	5523-93		T68H-BGB-B2N	T68H-BGC-B2N	18-001-972
3/4 PTF	Y68A-6AN-N1N	Y68A-6AN-N2N	5524-53		T68H-6AB-B2N	T68H-6AC-B2N	18-001-979
1 PTF	Y68A-8AN-N1N	Y68A-8AN-N2N	5524-50		T68H-8AB-B2N	T68H-8AC-B2N	18-001-979
1 1/4 PTF	Y68A-AAN-N1N	Y68A-AAN-N2N	5523-50		T68H-AAB-B2N	T68H-AAC-B2N	18-001-978
1 1/2 PTF	Y68A-BAN-N1N	Y68A-BAN-N2N	5523-95		T68H-BAB-B2N	T68H-BAC-B2N	18-001-972

Service kit

Nut	Tamper resistant cap & seal wire	Porting block	Padlock with two keys
			
4	3		
5520-89	4355-51	18-026-986 (G1/4 & G1/2)	0613633 (brass)

Service kit	Automatic drain
	
B68G-KITM05R (5 µm)	B68G-KITA05R (5 µm)
B68G-KITM40R (40 µm)	B68G-KITA40R (40 µm)

Gauges

Center back connection, white face (full technical specification see datasheet 8.900.900)



6

Pressure range bar *1	MPa	psi	Ø	Thread size	Model
0 ... 4	0 ... 0,4	0 ... 58	50 mm	R1/8	18-015-011
0 ... 10	0 ... 1	0 ... 145	50 mm	R1/8	18-015-013
0 ... 25	0 ... 2,5	0 ... 362	50 mm	R1/8	18-015-014

*1) primary scale

Center back connection, black face for North America (full technical specification see datasheet 8.900.900)



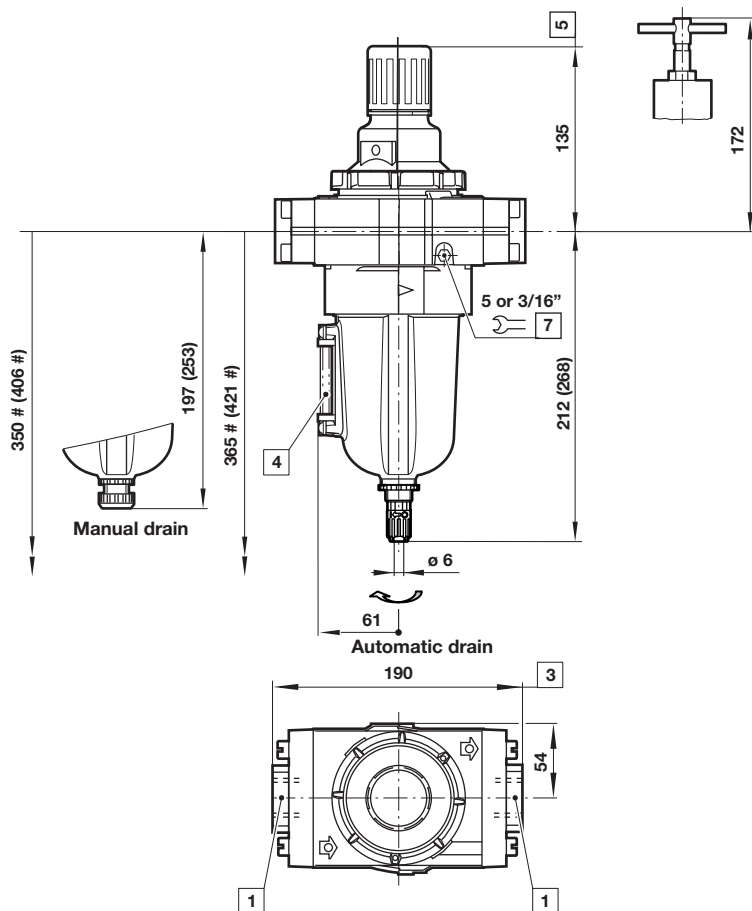
6

Pressure range psig *1	bar	MPa	Ø	Thread size	Model
0 ... 60	0 ... 4	0 ... 0,4	2" (50 mm)	1/8 NPT	18-015-202
0 ... 160	0 ... 11	0 ... 1,1	2" (50 mm)	1/8 NPT	18-015-204
0 ... 400	0 ... 28	0 ... 2,8	2" (50 mm)	1/8 NPT	18-015-206

*1) primary scale

Dimensions

Dimensions in mm
 Projection/First angle



Minimum clearance required to remove bowl
 () values for 1 litre bowl

1 Main ports 3/4", 1", 1 1/4" or 1 1/2"

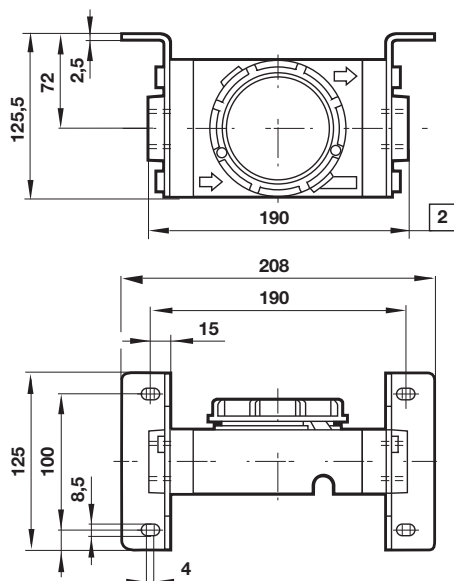
3 Plus 10 mm for ports 1 1/4" or 1 1/2"

4 Sight glass

5 Reduces by 4 mm with knob in locked position

7 Gauge port 1/8"

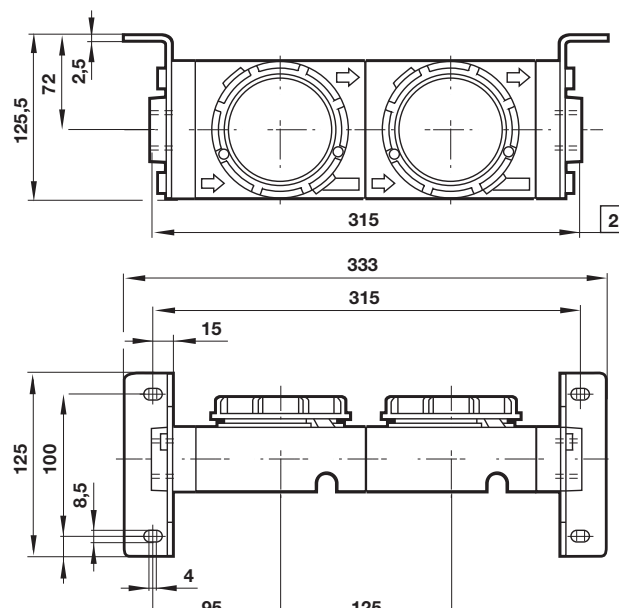
Single yoke with bracket



1 For 1 1/4" and 1 1/2" ported yokes add 10 mm

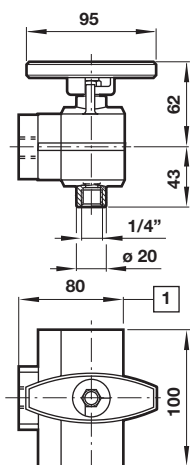
Double yoke with bracket

Dimensions in mm
Projection/First angle



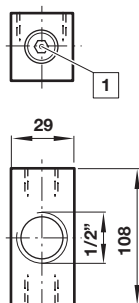
1 For 1 1/4" and 1 1/2" ported yokes add 10 mm

3/2 Shut-off valve



1 For 1 1/2" ported yokes add 5 mm

Porting block



1 Two additional plugged G1/4 ports

Warning

These products are intended for use in industrial compressed air systems only. Do not use these products where pressures and temperatures can exceed those listed under

»Technical features/data«.

Before using these products with fluids other than those specified, for non-industrial applications, life-support systems or other applications not within published specifications, consult IMI Precision Engineering, Norgren GmbH.

Through misuse, age, or malfunction, components used in fluid power systems can fail in various modes.

The system designer is warned to consider the failure modes of all component parts used in fluid power systems and to provide adequate safeguards to prevent personal injury or damage to equipment in the event of such failure.

System designers must provide a warning to end users in the system instructional manual if protection against a failure mode cannot be adequately provided.

System designers and end users are cautioned to review specific warnings found in instruction sheets packed and shipped with these products.

- > **Port size: 3/8" ... 3/4"**
(ISO G/PTF)
- > **Excelon design allows**
in-line installation or
modular installation
with other Excelon
products
- > **High efficiency water**
and particle removal
- > **Quick release bayonet**
bowl
- > **Push to lock**
adjusting knob with
optional tamper
resistant accessory
- > **Metal bowl with**
prismatic liquid level
indicator lens



Technical features

Medium:

Compressed air only

Maximum operating pressure:

Transparent bowl: 10 bar (145 psi)

Metal bowl: 17 bar (246 psi)

Pressure range:

0,3 ... 10 bar (4 ... 145 psi)

0,3 ... 4 bar (4 ... 58 psi) optional,

0,7 ... 17 bar (2 ... 250 psi) optional

Filter element:

5 µm & 40 µm

Port size:

G3/8, G1/2, G3/4,

3/8 PTF, 1/2 PTF, 3/8 PTF

Gauge port:

Rc 1/8 with ISO G main ports

1/4 PTF with PTF main ports

Flow:

100 dm³/s

At port size: 1/2"

Inlet pressure 10 bar (145 psi);

6,3 bar (91 psi) set pressure and a

Δp: 1 bar (14,5 psi) droop from set.

Filter element: 40 µm

Relieving:

Standard

Drain:

Manual or automatic

Automatic drain operating

conditions (float operated):

Bowl pressure required to close

drain: > 0,35 bar (5 psi)

Bowl pressure required to open

drain: ≤ 0,2 bar (2,9 psi)

Minimum air flow required to close

drain: 1 dm³/s (2 scfm)

Manual operation: depress pin

inside drain outlet to drain bowl

Ambient/Media temperature:

Transparent bowl:

-34 ... +50°C (-30 ... +122°F)

Metal bowl:

-34 ... +80°C (-30 ... +176°F)

Version with gauge:

-34 ... +65°C (-30 ... +149°F)

Air supply must be dry enough

to avoid ice formation at

temperatures below +2°C (+35°F).

Materials:

Body: Die cast aluminium

Bonnet: Aluminium

Valve: Brass

Bowl: Transparent PC with steel

guard or die cast aluminium

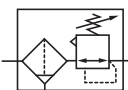
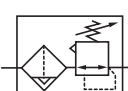
Liquid level indicator lens (metal

bowl): Transparent PA

Filter element: sintered PP

Elastomers: CR & NBR

Technical data B74G- standard models

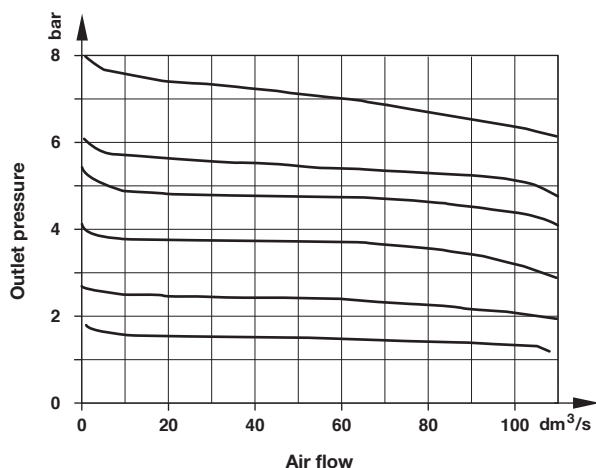
Symbol	Port size	Size	Drain	Pressure range (bar)	Filter element (µm)	Bowl with guard	Weight kg	Model
	G3/8	—	Manual	0,3 ... 10	40	PC (transparent)	1,19	B74G-3GK-QP3-RMN
	G1/2	Basic	Manual	0,3 ... 10	40	PC (transparent)	1,17	B74G-4GK-QP3-RMN
	G3/4	—	Manual	0,3 ... 10	40	PC (transparent)	1,16	B74G-6GK-QP3-RMN
	G3/8	—	Manual	0,3 ... 10	5	PC (transparent)	1,19	B74G-3GK-QP1-RMN
	G1/2	Basic	Manual	0,3 ... 10	5	PC (transparent)	1,17	B74G-4GK-QP1-RMN
	G3/4	—	Manual	0,3 ... 10	5	PC (transparent)	1,16	B74G-6GK-QP1-RMN
	G3/8	—	Automatic	0,3 ... 10	40	PC (transparent)	1,19	B74G-3GK-AP3-RMN
	G1/2	Basic	Automatic	0,3 ... 10	40	PC (transparent)	1,17	B74G-4GK-AP3-RMN
	G3/4	—	Automatic	0,3 ... 10	40	PC (transparent)	1,16	B74G-6GK-AP3-RMN
	G3/8	—	Automatic	0,3 ... 10	5	PC (transparent)	1,19	B74G-3GK-AP1-RMN
	G1/2	Basic	Automatic	0,3 ... 10	5	PC (transparent)	1,17	B74G-4GK-AP1-RMN
	G3/4	—	Automatic	0,3 ... 10	5	PC (transparent)	1,16	B74G-6GK-AP1-RMN

B74G-★ ★ ★ - ★ ★ ★ - ★ ★ ★

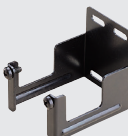

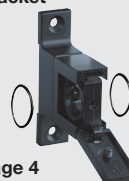



Gauge	Substitute
Without (standard)	N
With	G
Pressure range *2)	Substitute
0,3 ... 4 bar	F
0,3 ... 10 bar (standard)	M
0,7... 17 bar	S*1)
Diaphragm	Substitute
Relieving (standard)	R
Non relieving	N
Element	Substitute
40 µm (standard)	3
5 µm	1

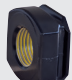



*2) Outlet pressure can be adjusted to pressures in excess of, and less than, those specified. Do not use these units to control pressures outside of the specified ranges.

Port size: 1/2", 40 µm element





Accessories

Wall mounting bracket	Quikclamp®	Quikclamp with wall bracket®	NECK mounting bracket	Panel nut	Tamper resistant kit
					
Page 4	Page 4	Page 4	Page 4		
4324-50	4314-51	4314-52	4368-51	4348-89	4355-51


Quikmount pipe adaptor *1)	Porting block with three alternative 1/4" ports	2/2 Shut-off valves (for full technical specification see datasheet 8.200.600)	3/2 Shut-off valves (for full technical specification see datasheet 8.200.600)
			
Page 4	Page 4	Page 5	Page 5
G3/8: 4315-10	G1/4: 4316-52	G3/8: T74B-3GA-P1N	G3/8: T74T-3GA-P1N
G1/2: 4315-11	1/4 PTF: 4316-50	G1/2: T74B-4GA-P1N	G1/2: T74T-4GA-P1N
G3/4: 4315-12		G3/4: T74B-6GA-P1N	G3/4: T74T-6GA-P1N
3/8 PTF: 4315-02			
1/2 PTF: 4315-03			1/2 PTF: T74T-4AA-P1N
3/4 PTF: 4315-04		3/4 PTF: T74B-6AA-P1N	3/4 PTF: T74T-6AA-P1N

*1) Please use a Quikmount pipe adaptor if the Quikclamp be mounted at inlet or outlet side.

Pressure switch

Porting block for pressure switch	Pressure switch (0,5 ... 8 bar)
	
Page 4	
0523110000000000	0881300000000000

Padlock

Padlock (brass) with two keys *1)

0613633000000000


*1) For shut-off valves and tamper resistant kit

Service kit

	Service kit for auto drain	Service kit for manual drain
Element		
40 µm	B74G-KITA40R	B74G-KITM40R
5 µm	B74G-KITA05R	B74G-KITM05R

Gauge


Center back connection, white face
(for full technical specification see datasheet 8.900.900)



Pressure range					
bar *1)	MPa	psi	Ø	Thread size	Model
0 ... 6	0 ... 0,6	0 ... 84	50 mm	R1/8	18-015-012
0 ... 10	0 ... 1	0 ... 145	50 mm	R1/8	18-015-013
0 ... 25	0 ... 2,5	0 ... 362	50 mm	R1/8	18-015-014

*1) primary scale

Center back connection, black face for North America (for full technical specification see datasheet 8.900.900)



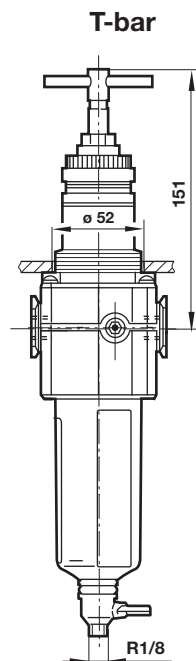
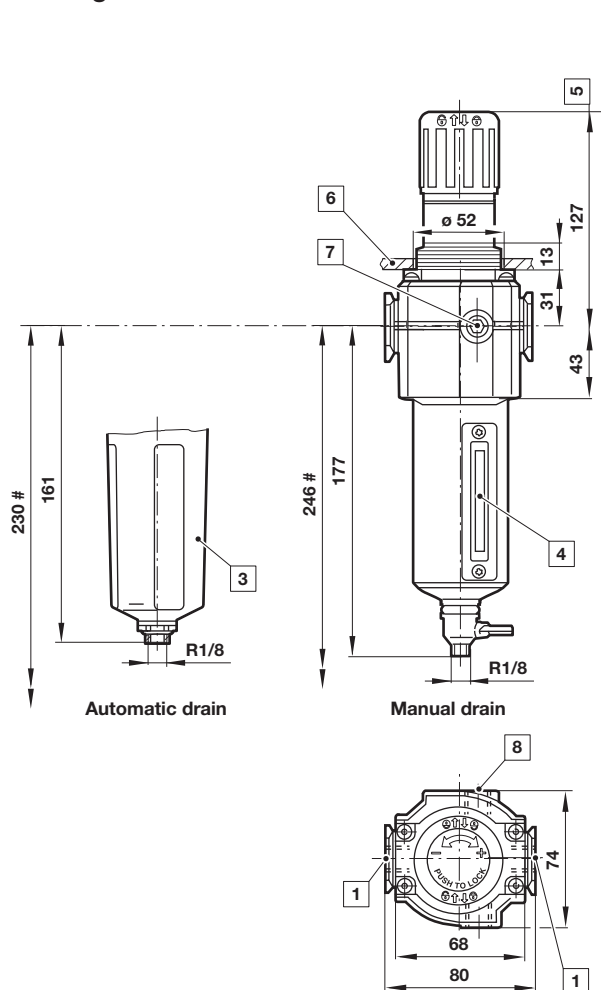
Pressure range

psig *1)	bar	MPa	Ø	Thread size	Model
0 ... 60	0 ... 4	0 ... 0.4	2" (50 mm)	1/4 NPT	18-015-208
0 ... 160	0 ... 11	0 ... 1.1	2" (50 mm)	1/4 NPT	18-015-209
0 ... 300	0 ... 20	0 ... 2.1	2" (50 mm)	1/4 NPT	18-015-210

*1) primary scale

Drawings

Dimensions in mm
Projection/First angle

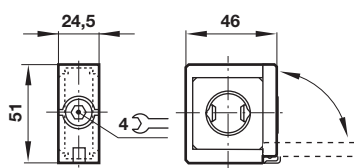


Minimum clearance required to remove bowl

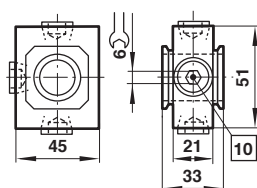
- 1 Main ports 3/8", 1/2" or 3/4"
- 3 Transparent bowl with guard
- 4 Metal bowl with liquid indicator
- 5 Reduces by 4 mm with knob in locked position
- 6 Panel thickness 2 ... 6 max.
- 7 Gauge port Rc1/8 for ISO G and 1/4 PTF for PTF main ports
- 8 Alternative gauge port plugged

Accessories

Quikclamp®

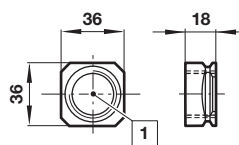


Porting block



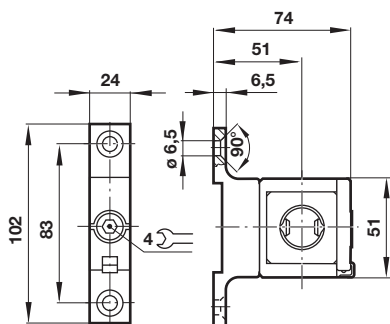
10 Ports 1/4" ISO G/PTF plugged

Pipe adapter

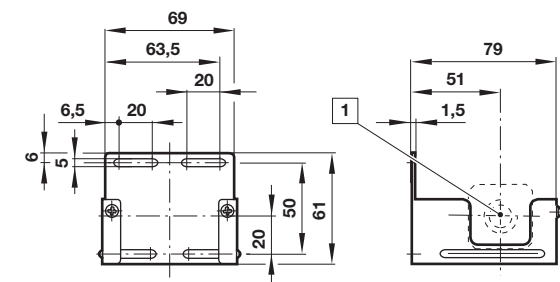


1 Main ports 3/8", 1/2" or 3/4" ISO G/PTF

Quikclamp® with wall bracket

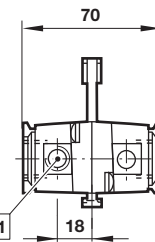
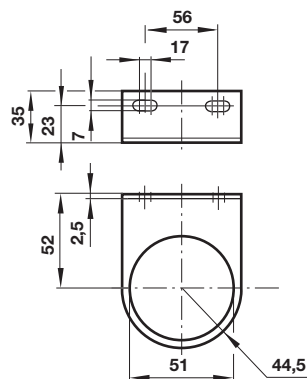


Wall mounting bracket



1 Main ports

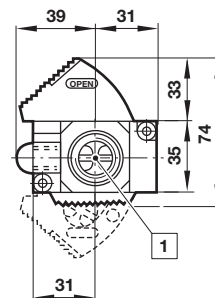
Neck mounting bracket Shut-off valves



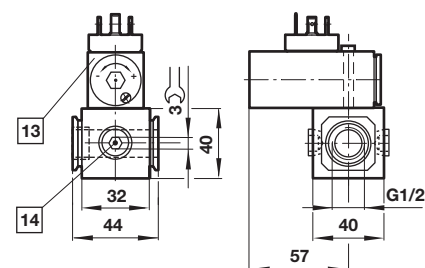
1 Main ports 3/8", 1/2" or 3/4" (ISO G/PTF)

11 Exhaust port Rc1/8 at 3/2 valve only

Dimensions in mm
Projection/First angle



Porting block for pressure switch



13 Pressure switch is not in scope of delivery

14 Alternative G1/4 ports plugged

Warning

These products are intended for use in industrial compressed air systems only. Do not use these products where pressures and temperatures can exceed those listed under »**Technical features/data**«.

Before using these products with fluids other than those specified, for non-industrial applications, life-support systems or other applications not within published specifications, consult IMI Precision Engineering, Norgren Inc.

Through misuse, age, or malfunction, components used in fluid power systems can fail in various modes. The system designer is warned to consider the failure modes of all component parts used in fluid power systems and to provide adequate safeguards to prevent personal injury or damage to equipment in the event of such failure.

System designers must provide a warning to end users in the system instructional manual if protection against a failure mode cannot be adequately provided.

System designers and end users are cautioned to review specific warnings found in instruction sheets packed and shipped with these products.

B84G - General purpose filter/regulator Excelon® Plus Modular System



- > Port size: 3/8" ... 3/4" (ISO G/PTF)
- > Excelon® Plus design allows in-line installation or modular installation with other Excelon® Plus products
- > 5 or 40 micron particle and high efficiency water removal (> 98%)
- > Double safety lock bowl
- > Air purity classes in accordance to ISO8573-1:2010: 7:8:4 (40µm) 6:8:4 (5µm)
- > Push to lock adjusting knob with built in tamper resistant feature
- > Metal bowl with prismatic liquid level indicator lens
- > Light weight Polycarbonate bowl
- > Easy to read flush mounted gauge as standard, integrated electronic pressure sensor as option



Technical features filter/regulator

Medium:

Compressed air only

Maximum supply pressure:

Polycarbonate bowl: 10 bar (145 psi)

Metal bowl: 20 bar (290 psi)

Outlet pressure ranges:

0,3 ... 10 bar (4 ... 145 psi),

0,3 ... 4 bar (4 ... 58 psi) optional

0,7 ... 17 bar (2 ... 250 psi)

optional

Filter element:

5 µm & 40 µm

Port size:

G3/8, G1/2, G3/4,

3/8 PTF, 1/2 PTF, 3/4 PTF

Gauge:

Integrated as standard

Gauge port 1/8 or electronic

pressure sensor as option

Flow:

100 dm³/s at port size: 1/2",
inlet pressure 10 bar (145 psi),
6,3 bar (91 psi) set pressure and
a Δp: 1 bar (14,5 psi) droop from
set. Filter element: 40 µm

Diaphragm Type:

Relieving

Drain:

Manual or automatic

Automatic drain operating conditions (float operated):

Bowl pressure required to close
drain: > 0,35 bar (5 psi)

Bowl pressure required to open
drain: ≤ 0,2 bar (2.9 psi)

Minimum air flow required to
close drain: 1 dm³/s (2 scfm)

Ambient/Media temperature:

Polycarbonate bowl:

-10 ... +60°C (+14 ... +140°F)

Metal bowl:

-20 ... +65°C (-4 ... +149°F)

Air supply must be dry enough
to avoid ice formation at
temperatures below +2°C (+35°F).

Atex:

Filter/regulators B84 are in
conformity with Atex 2014/34/EU

Ex II 2 GD

Ex h IIC T6 Gb

EX h IIIC T85°C Db

excluding all versions with
electronic pressure sensor

Materials:

Body: Die cast aluminium

Body covers: ABS

Bonnet: Acetal/ Aluminium

Valve: PP

Transparent Bowl : Polycarbonate with Polypropylene Guard.

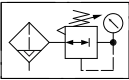
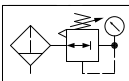
Metal Bowl: Die cast Aluminium with PA liquid level indicator lens

Filter element: sintered PP

Bowl 'o'- ring: Chloroprene

Elastomers: NBR

Technical data B84G - standard models with integrated flush mounted gauge

Symbol	Port size	Drain	Pressure range (bar)	Filter element (µm)	Bowl	Weight (kg)	Model *1)
	G3/8	Auto	0,3 ... 10	40	Guarded polycarbonate	0,73	B84G-3GK-AP3-RMG
	G1/2	Auto	0,3 ... 10	40	Guarded polycarbonate	0,73	B84G-4GK-AP3-RMG
	G3/4	Auto	0,3 ... 10	40	Guarded polycarbonate	0,73	B84G-6GK-AP3-RMG
	G3/8	Auto	0,3 ... 10	40	Metal with level indicator	0,88	B84G-3GK-AD3-RMG
	G1/2	Auto	0,3 ... 10	40	Metal with level indicator	0,88	B84G-4GK-AD3-RMG
	G3/4	Auto	0,3 ... 10	40	Metal with level indicator	0,88	B84G-6GK-AD3-RMG
	G3/8	Manual	0,3 ... 10	40	Guarded polycarbonate	0,73	B84G-3GK-QP3-RMG
	G1/2	Manual	0,3 ... 10	40	Guarded polycarbonate	0,73	B84G-4GK-QP3-RMG
	G3/4	Manual	0,3 ... 10	40	Guarded polycarbonate	0,73	B84G-6GK-QP3-RMG
	G3/8	Manual	0,3 ... 10	40	Metal with level indicator	0,88	B84G-3GK-QD3-RMG
	G1/2	Manual	0,3 ... 10	40	Metal with level indicator	0,88	B84G-4GK-QD3-RMG
	G3/4	Manual	0,3 ... 10	40	Metal with level indicator	0,88	B84G-6GK-QD3-RMG

*1) All models shown here are supplied with integrated gauge applicable for flow direction left to right.

With flow direction right to left please use the online configurator www.norgren.com/air-preparation-configurator or contact Norgren

B84G - Filter/regulator with integrated electronic pressure sensor

- > Electronic monitoring of secondary pressure
- > 1.44" full colour graphic display. Excellent Visual Management.
- > Parameter Adjustment via front screen Buttons or Accessed Via IO-Link
- > Configurable switching output
- > Adjustable settings:
 - Setpoint,
 - Tolerance,
 - Hysteresis,
 - Pressure Units,
 - Temperature Units,
 - Screen Orientation,
 - Digital Output Type (NPN, PNP, Push-Pull),
 - Digital Output State (Normally High, Normally Low)
- > Install as a standard electronic pressure sensor or a pressure transducer with IO-Link



 **IO-Link**

Technical features integrated electronic pressure sensor

Electrical parameters

Secondary pressure measurement range:

0 ... 10 bar
(0 ... 145 psi, 0 ... 1.0 MPa)

Repeatability:

≤ 0.1% of full scale (FS) at stable temperature

Accuracy:

≤ 1.5% of full scale (FS) of detected pressure (0 ... +50°C, +32 ... +122°F)

Units:

Pressure: bar, psi, MPa
Temperature: °C, °F
Voltage: V

Display:

1.44" full colour TFT LCD
Text / background colours:
white/green: pressure in range
white/red: pressure out of range
white/amber: error
black white: setting mode

Display fields:

User configurable identifier, pressure value, pressure units, user configurable message, menu

IO-Link function:

Pressure information
Pressure out of range warnings
Temperature diagnostic
Supply voltage diagnostic
Operating time diagnostic

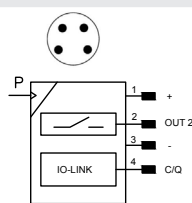
Min. cycle time:

20 ms

For product IODD file please use the online link <http://s.norgren.com/digital-gauge-iodd>

for a copy of the Quick Start Guide or comprehensive Operators manual please use the following online link www.norgren.com/excelon-plus

Electrical connection M8 x 1

	Pin-No.	Signal	Cable
	1	L+ (24V)	brown
	2	Out 2 (switching)	white
	3	L- (0V)	blue
	4	C/Q (IO-Link)	black

Electrical connection:

M8 x 1

Power supply:

18 ... 30 V d.c.

Current consumption:

20 mA

Electromagnetic compatibility:

According to EN 61000-6-2;
EN 61000-6-3

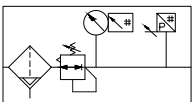
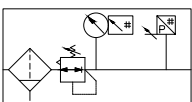
Switching output:

Configurable NPN / PNP / Push-Pull / NO / NC / hi-Z

Load current:

100mA with short circuit protection

Technical data B84G - standard models with integrated electronic pressure sensor

Symbol	Port size	Drain	Pressure range (bar)	Filter element (µm)	Bowl	Weight (kg)	Model *)
	G3/8	Auto	0,3 ... 10	40	Guarded polycarbonate	0,93	B84G-3GK-AP3-RME
	G1/2	Auto	0,3 ... 10	40	Guarded polycarbonate	0,93	B84G-4GK-AP3-RME
	G3/4	Auto	0,3 ... 10	40	Guarded polycarbonate	0,93	B84G-6GK-AP3-RME
	G3/8	Auto	0,3 ... 10	40	Metal with level indicator	1,08	B84G-3GK-AD3-RME
	G1/2	Auto	0,3 ... 10	40	Metal with level indicator	1,08	B84G-4GK-AD3-RME
	G3/4	Auto	0,3 ... 10	40	Metal with level indicator	1,08	B84G-6GK-AD3-RME
	G3/8	Manual	0,3 ... 10	40	Guarded polycarbonate	0,93	B84G-3GK-QP3-RME
	G1/2	Manual	0,3 ... 10	40	Guarded polycarbonate	0,93	B84G-4GK-QP3-RME
	G3/4	Manual	0,3 ... 10	40	Guarded polycarbonate	0,93	B84G-6GK-QP3-RME
	G3/8	Manual	0,3 ... 10	40	Metal with level indicator	1,08	B84G-3GK-QD3-RME
	G1/2	Manual	0,3 ... 10	40	Metal with level indicator	1,08	B84G-4GK-QD3-RME
	G3/4	Manual	0,3 ... 10	40	Metal with level indicator	1,08	B84G-6GK-QD3-RME

*) All models shown here are supplied with integrated pressure sensor applicable for flow direction left to right.

With flow direction right to left please use the online configurator www.norgren.com/air-preparation-configurator or contact Norgren

Option selector *1)

Port size	Substitute
3/8"	3
1/2"	4
3/4"	6
Thread form	Substitute
PTF	A
ISO G parallel (standard)	G
Adjustment	Substitute
Knob (standard)	K
T-bar	T*2)
Drain	Substitute
Manual (standard)	Q
Auto drain (standard)	A
Bowl	Substitute
Metal with liquid indicator	D
Transparent with guard (standard)	P

*1) All models shown here are applicable for flow direction left to right. With flow direction right to left please use the online configurator www.norgren.com/air-preparation-configurator

or contact Norgren

*2) Units with 17 bar outlet pressure range are available only with the T-bar adjustment and only with metal bowl. Not available in connection with integrated pressure sensor.

B84G-★★★-★★★-R★★

Gauge	Substitute
With integrated electronic pressure sensor *3)	E
With integrated gauge	G
Without integrated gauge but with gauge port 1/8"	N
Pressure range *4)	Substitute
0,3 ... 4 bar	F
0,3 ... 10 bar (standard)	M
0,7 ... 17 bar	S*2)
Element	Substitute
40 µm (standard)	3
5 µm	1

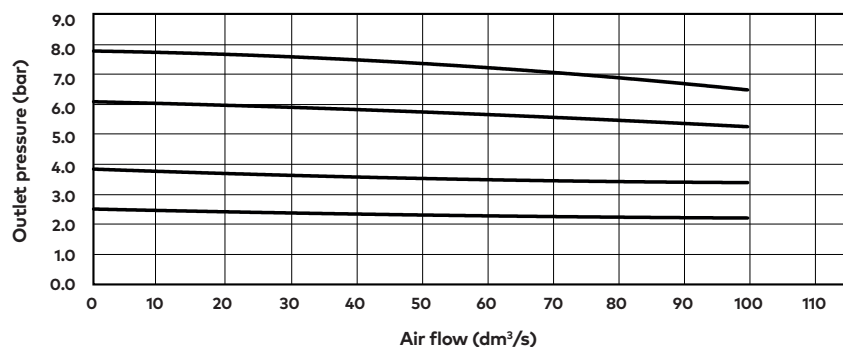
*3) Only available with 10 or 4 bar pressure range

*4) Outlet pressure can be adjusted to pressures in excess of, and less than, those specified. Do not use these units to control pressures outside of the specified ranges.

Flow characteristics

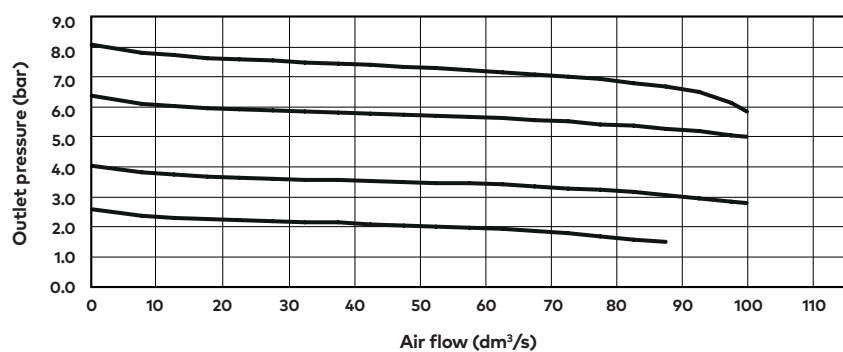
Inlet pressure: 10 bar (145 psi)

Port size: 1/2", 40 µm element



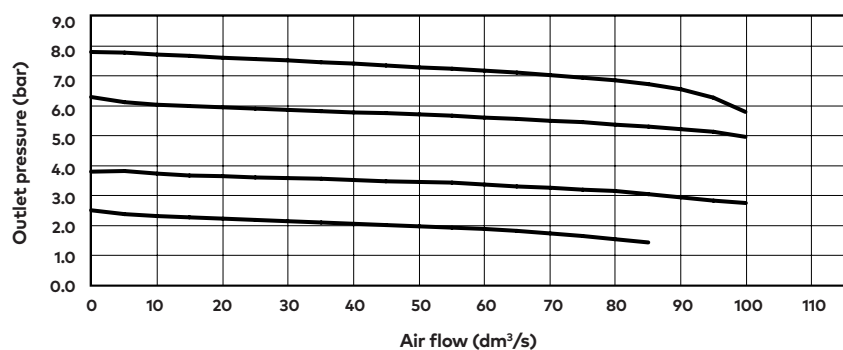
Inlet pressure: 10 bar (145 psi)

Port size: 3/8", 5 µm element



Inlet pressure: 10 bar (145 psi)

Port size: 3/8", 40 µm element



Accessories

Quikclamp®



Page 6

840014-51KIT

Quikclamp® with bracket assembled



Page 6

840014-52KIT

Hybrid Quikclamp® *1



Page 6

840014-61

Hybrid Quikclamp® with bracket assembled *1



Page 6

840014-62

*1) To connect new Excelon Plus to old Excelon 74/73 units. Having the same hole centres as 74 series mounting bracket.

A Quikclamp adds 13.6 mm to the overall width of a combination unit

Neck mounting bracket and panel nut



Page 6

840068-51KIT

Panel mounting nut



Page 6

840048-89KIT

Mounting bracket



Page 6

840024-50KIT

Integrated gauge 10 bar gauge



840073-01KIT

Integrated gauge 20 bar gauge



840073-02KIT

Gauge adaptor kit 1/8 PTF



840100-01KIT

Gauge adaptor kit R 1/8



840100-02KIT

Full flow porting block horizontal, 3/4 PTF



Page 7

840028-50KIT

Full flow porting block horizontal, G3/4



Page 7

840028-53KIT

Full flow porting block vertical, 3/4"PTF



Page 7

840028-68KIT

Full flow porting block vertical, G3/4"



Page 7

840028-69KIT

Pressure switch interface block (18D pressure switch) G1/4



Page 8

0337717000000000

Pressure sensing block 1/4 PTF



Page 7

840016-50KIT

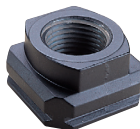
Pressure sensing block G1/4



Page 7

840016-51KIT

Port Adaptors



Page 8

3/8 PTF 840015-02KIT

1/2 PTF 840015-03KIT

3/4 PTF 840015-04KIT

G3/8 840015-10KIT

G1/2 840015-11KIT

G3/4 840015-12KIT

Padlock



840055-01KIT

Lockout device



840055-02KIT

**Pressure switch 18D
(0,5 ... 8bar) *1**

Page 8

0881300

**Digital pressure switch
51D (-1 ... 10 bar) *2**

Page 8

0860810

**Electronic Pressure Sensor
– stand alone version *3**


Q84G

IO-Link cables
Connection cable M8x1 for intergated digital pressure sensor


Description	Cable length (m)	Model
M8 female to M12 male	0,6	NC-084FS-124MS-A
	1,0	NC-084FS-124MS-1
	2,0	NC-084FS-124MS-2
	5,0	NC-084FS-124MS-5
M8 female to free end	3,0	NC-084FS-00000-3

*1) Flanged version. For other pressure ranges, please see data sheet 5.11.001

*2) For other pressure ranges, please see data sheet 5.11.385

*3) Q84G standalone electronic pressure sensor module
see <http://s.norgren.com/digital-gauge-iodd> for data-sheet 8.900.905.

Gauges

(For regulators with gauge port instead of integrated port)

**Center back connection, white face
(for full technical specification see datasheet 8.900.900)**



Pressure range (bar)*3)	(psi)	MPa	Ø	Thread size	Model
0 ... 6	0 ... 0,6	0 ... 84	40 mm	R1/8	18-015-885
0 ... 10	0 ... 1	0 ... 145	40 mm	R1/8	18-015-989
0 ... 25	0 ... 2,5	0 ... 362	40 mm	R1/8	18-015-908

*3) primary scale

Maintenance/Service
**Filter cartridge
5 micron**


840038-50KIT

**Filter cartridge
40 micron**


840038-51KIT

**Auto drain kit with
metal Nut - Imperial**


6000-61KIT

**Auto drain kit with
metal Nut - Metric**


6000-60KIT

**R84 / B84
Elastomer Kit**


FRLB84-KIT

Spare parts
**Filter Bowl (Guarded Poly bowl
with auto drain 6 mm PIF)**


840025-51KIT

**Filter Bowl (Guarded Poly
bowl with manual drain)**


840025-50KIT

**Filter Bowl (Metal with S/
Glass & auto drain, 6 mm PIF)**


840003-51KIT

**Filter Bowl (Metal with S/
Glass & manual drain)**


840003-50KIT

**Filter Bowl (Guarded Poly
bowl with auto drain, 1/4 PIF)**


840025-53KIT

**Filter Bowl (Metal with S/
Glass & auto drain, 1/4 PIF)**


840003-56KIT

Dimensions

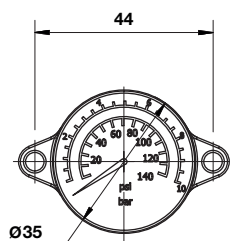
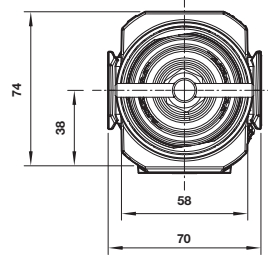
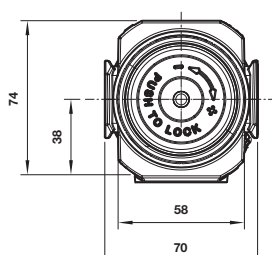
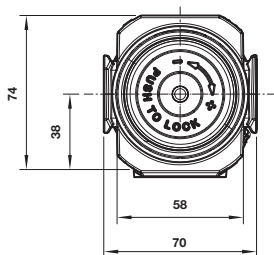
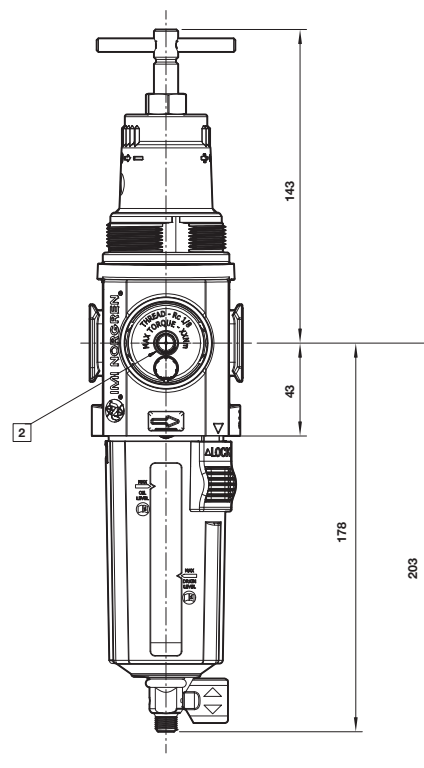
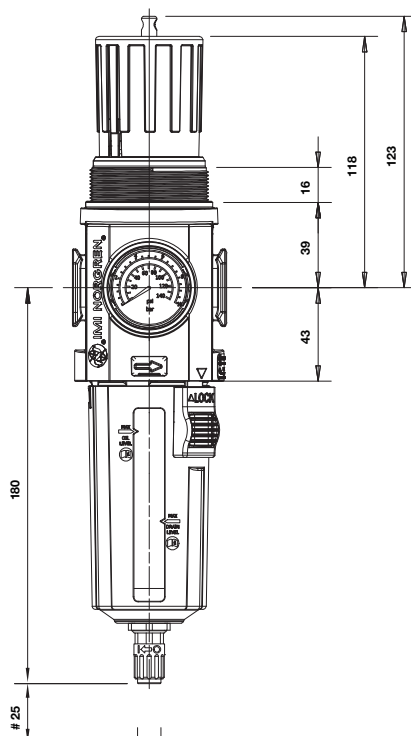
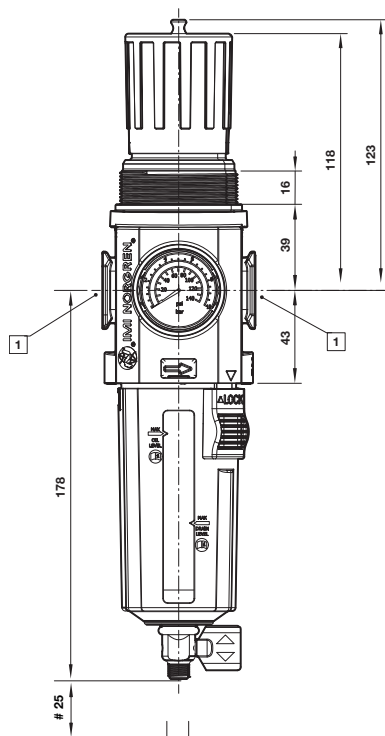
1/4 Turn Manual Drain

With knob

Automatic Drain

1/4 Turn Manual Drain
With T-bar

Dimensions in mm
Projection/First angle



Minimum clearance for bowl removal

1 Main ports 3/8", 1/2" or 3/4"
(ISO G/PTF)

2 Gauge port Rc 1/8 for ISO G and
1/8 PTF for PTF main ports

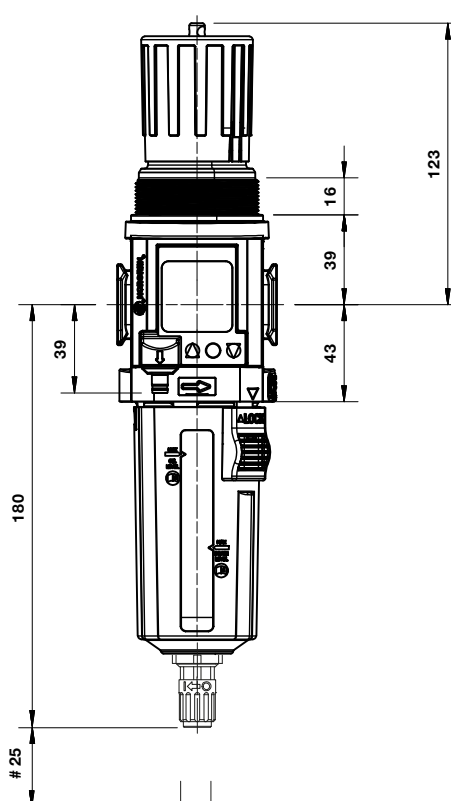
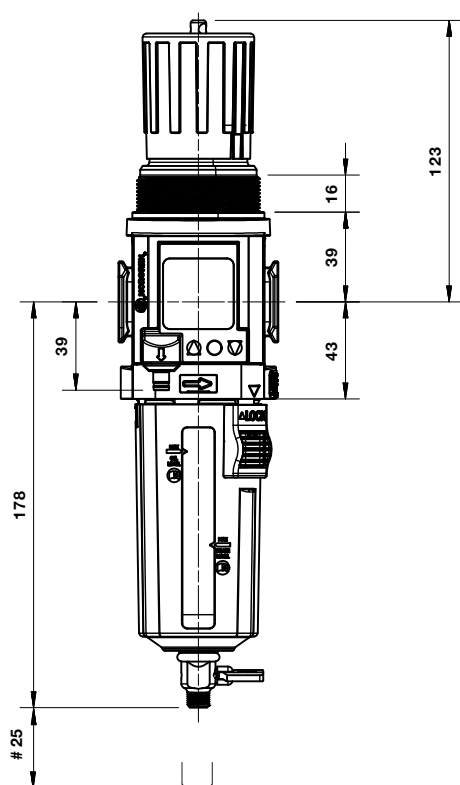
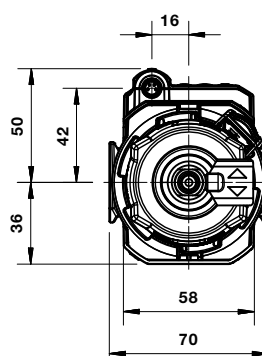
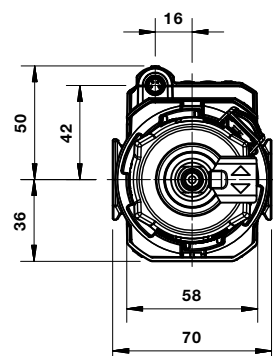
Dimensions B84G- General Purpose Filter Regulator

1/4 Turn Manual Drain

With knob

Automatic Drain

Dimensions in mm
Projection/First angle

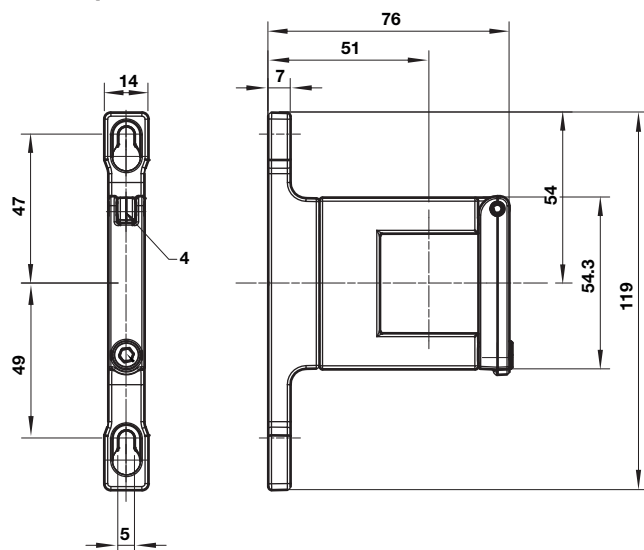


Accessories

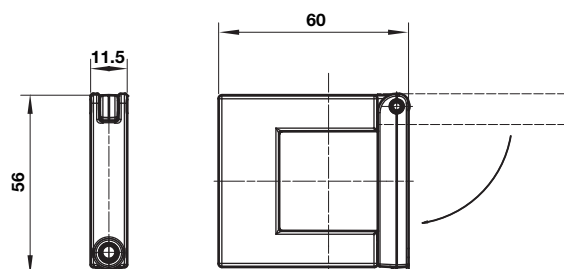
Dimensions in mm
Projection/First angle



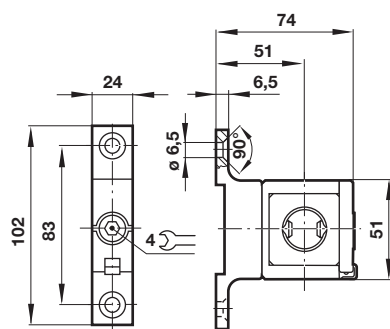
Quikclamp® with wall bracket



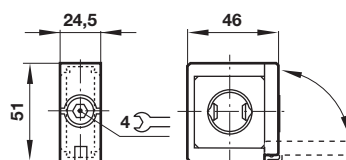
Quikclamp®



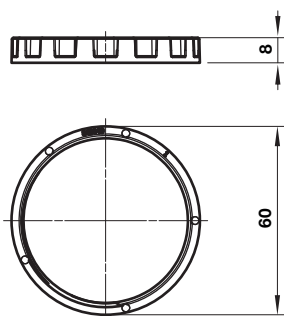
Hybrid-Quikclamp® with wall bracket



Hybrid-Quikclamp®

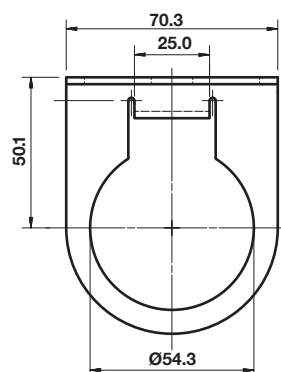
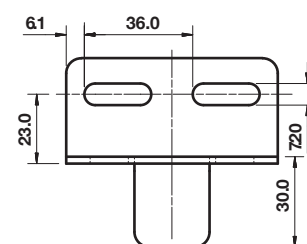


Panel mounting nut



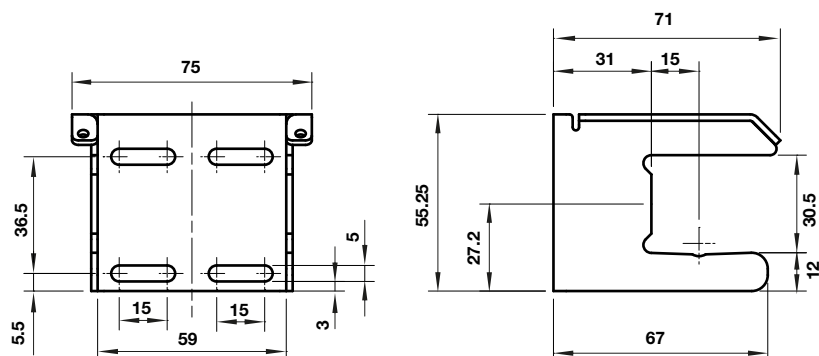
Recommended panel hole size:
ø 55 mm ... 57 mm
Panel thickness:
2 ... 6 mm

Neck mounting bracket



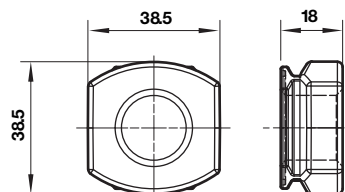
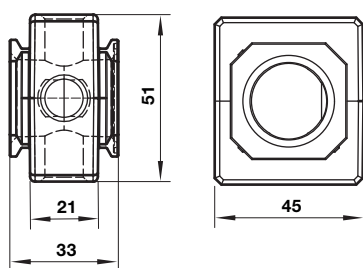
Mounting bracket

Dimensions in mm
Projection/First angle



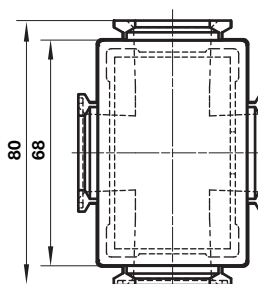
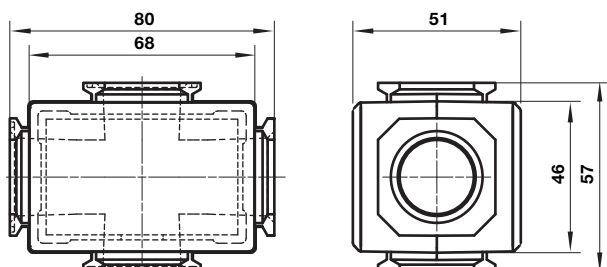
Pressure sensing block

Pipe adaptor

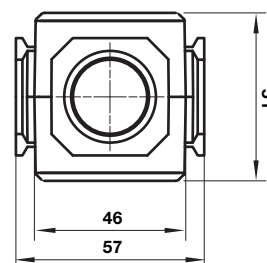
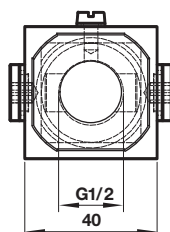
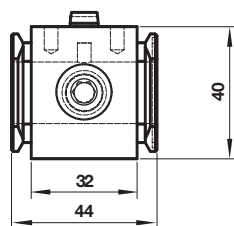


Full flow porting block horizontal

Full flow porting block vertical



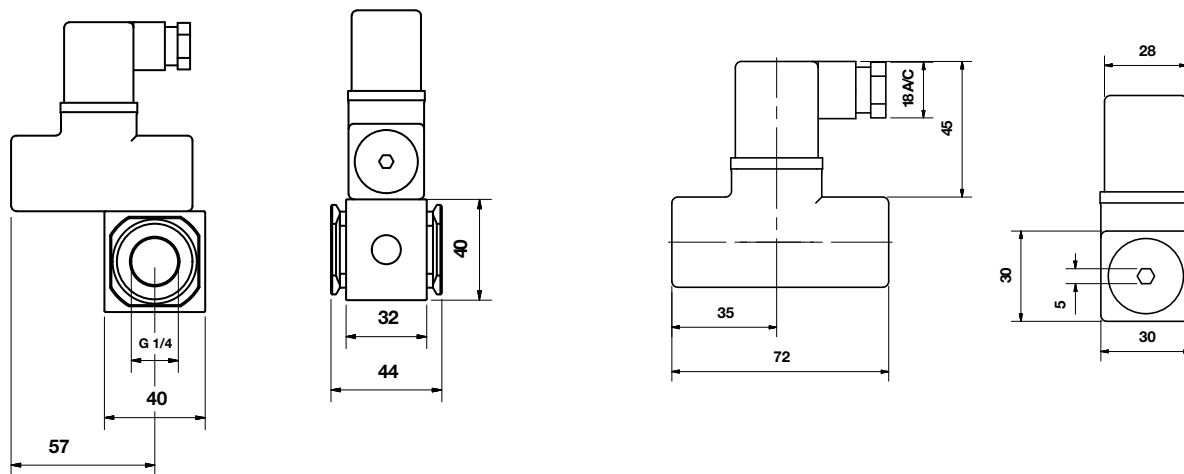
Porting block for 18D pressure switch



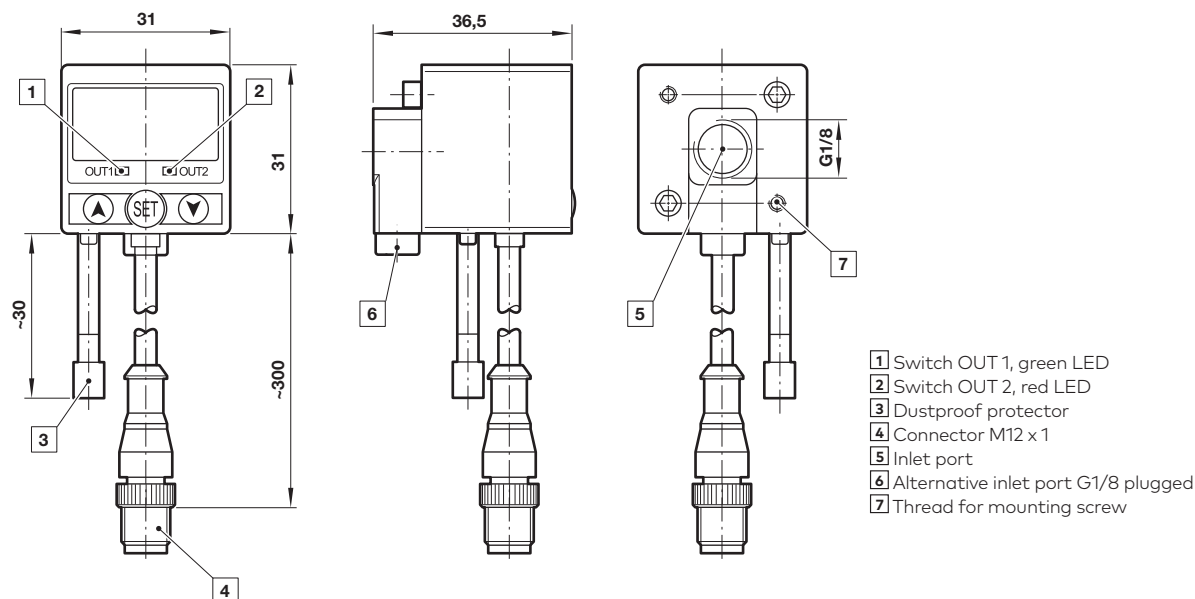
18D Porting block and 18D assembled

18D Pressure switch

Dimensions in mm
Projection/First angle



51D Pressure switch - digital



Warning

These products are intended for use in industrial compressed air systems only. Do not use these products where pressures and temperatures can exceed those listed under »**Technical features/data**«.

Before using these products with fluids other than those specified, for non-industrial applications, life-support systems or other applications not within published specifications, consult IMI Precision Engineering, Norgren Ltd.

Through misuse, age, or malfunction, components used in fluid power systems can fail in various modes. The system designer is warned to consider the failure modes of all component parts used in fluid power systems and to provide adequate safeguards to prevent personal injury or damage to equipment in the event of such failure.

System designers must provide a warning to end users in the system instructional manual if protection against a failure mode cannot be adequately provided.

System designers and end users are cautioned to review specific warnings found in instruction sheets packed and shipped with these products.