

- > **Port size: 1/4" ... 3/4"**
(ISO G/ PTF)
- > **Oil-fog option available**
- > **Micro-fog plug-in lubricators for best lubrication in general purpose pneumatic applications**



Technical features

Medium:

Compressed air

Maximum operating pressure:

17 bar (246 psi)

Start point:

1,5 dm³/s

Bowl size:

0,2 litre (7 fl oz) standard

1 litre (34 fl oz) optional

Ambient/Media temperature:

-20° ... +80°C (-4° ... +176°F)

Air supply must be dry enough to avoid ice formation at temperatures below +2°C (+35°F).


Materials:

Body & yoke: Zinc alloy


Sight dome: Transparent PA

Elastomers: NBR

Technical data L64C - Oil-fog lubricators; standard models

Symbol	Port size	Size	Flow * (dm³/s)	Bowl	Weight (kg)	Model
	G1/4	—	25	Metal	1,42	L64C-2GP-EDN
	G3/8	—	62	Metal	1,4	L64C-3GP-EDN
	G1/2	Basic	72	Metal	1,37	L64C-4GP-EDN
	G3/4	—	72	Metal	1,73	L64C-6GP-EDN
	Without yoke	—	—	Metal	0,94	L64C-NNP-EDN

Technical data L64M - Micro-fog lubricators; standard models

Symbol	Port size	Size	Flow * (dm³/s)	Bowl	Weight (kg)	Model
	G1/4	—	25	Metal	1,42	L64M-2GP-EDN
	G3/8	—	62	Metal	1,40	L64M-3GP-EDN
	G1/2	Basic	72	Metal	1,37	L64M-4GP-EDN
	G3/4	—	72	Metal	1,73	L64M-6GP-EDN
	Without yoke	—	—	Metal	0,94	L64M-NNP-EDN

* Typical flow with 6,3 bar (91 psi) inlet pressure and 0,5 bar (7 psi) pressure drop

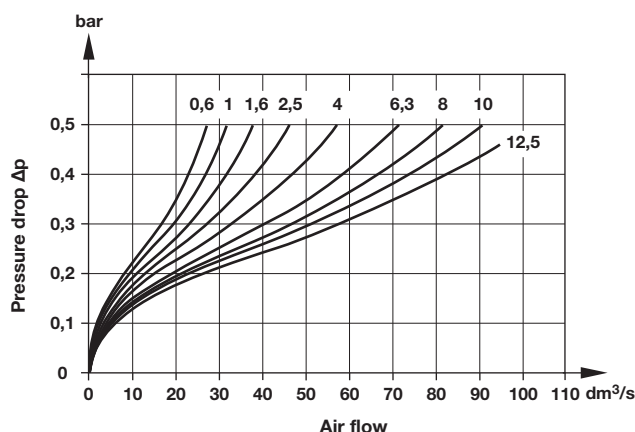
Option selector

L64★-★★P-E★★


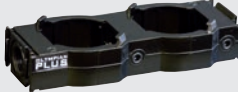




Type	Substitute	Options	Substitute
Oil-fog	C	None	N
Micro-fog	M	Quick fill device	Q
Port size	Substitute	Bowl	Substitute
1/4"	2	Metal with liquid level indicator; 0,2 litre	D
3/8"	3	Long metal bowl with liquid level indicator; 1 litre	A
1/2"	4		
3/4"	6		
Without yoke	N		
Threads	Substitute		
PTF	A		
ISO G (standard)	G		
Without yoke (standard)	N		

Flow characteristics








Port size 1/2"



Accessories

	Models with G-thread Single yoke	Double yoke	3/2 Shut-off valve Threaded inlet only	Threaded outlet only	End connector kit	Rear entry bracket kit
						
Thread	5				2	8
G1/4	Y64A-2GA-N1N	Y64A-2GA-N2N	T64T-2GB-P1N	T64T-2GC-P1N	—	—
G3/8	Y64A-3GA-N1N	Y64A-3GA-N2N	T64T-3GB-P1N	T64T-3GC-P1N	—	—
G1/2	Y64A-4GA-N1N	Y64A-4GA-N2N	T64T-4GB-P1N	T64T-4GC-P1N	74505-50	—
G3/4	Y64A-6GA-N1N*	Y64A-6GA-N2N*	T64T-6GB-P1N	T64T-6GC-P1N	74505-53	18-026-981
1/4 PTF	Y64A-2AA-N1N	Y64A-2AA-N2N	T64T-2AB-P1N	T64T-2AC-P1N	—	—
3/8 PTF	Y64A-3AA-N1N	Y64A-3AA-N2N	T64T-3AB-P1N	T64T-3AC-P1N	—	—
1/2 PTF	Y64A-4AA-N1N	Y64A-4AA-N2N	T64T-4AB-P1N	T64T-4AC-P1N	74505-52	—
3/4 PTF	Y64A-6AA-N1N*	Y64A-6AA-N2N*	T64T-6AB-P1N	T64T-6AC-P1N	74505-55	—

*These yokes are supplied with two end connector kits as standard.

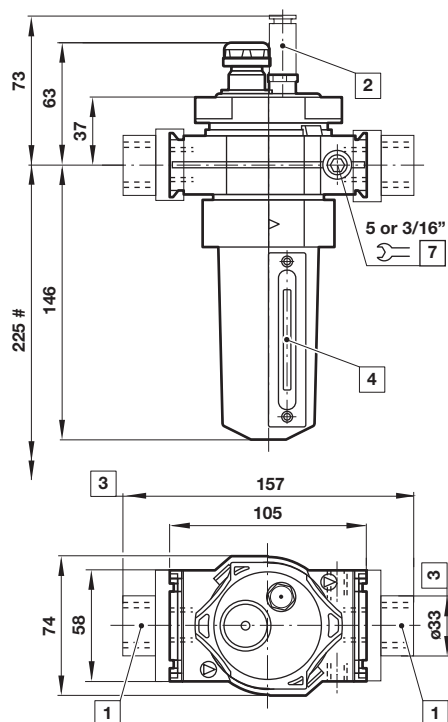
Bracket mounting	Nut	Quick fill device	Yoke connector kit	Porting block	Adjustable pressure switch	Padlock with two keys
						
1	4		9			
74504-50	74502-89	18-011-024	74503-51	74507-50	4346-99	0613633 (brass)

Service kit



Dimensions

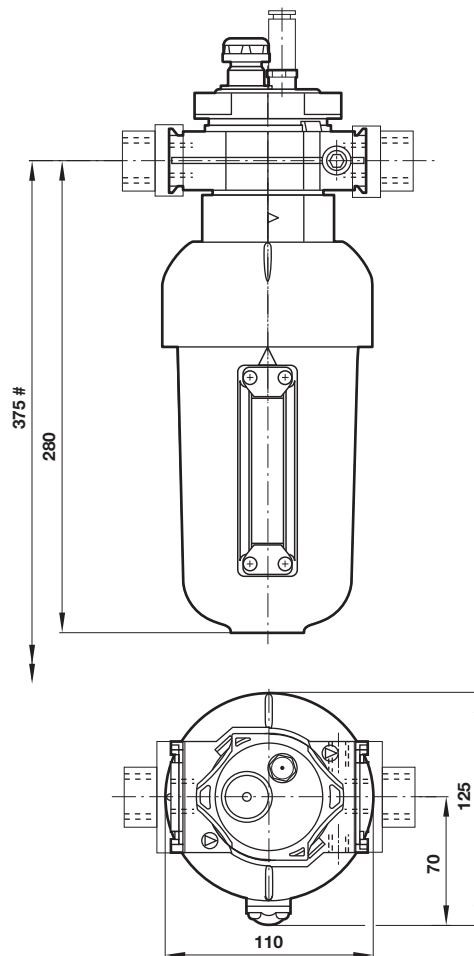
0,2 litre bowl



Minimum clearance required to remove bowl

- 1 Main ports 1/4", 3/8", 1/2" or 3/4"
- 2 Quick fill device
- 3 For main ports 3/4" only
- 4 Sight glass
- 7 Gauge port 1/8"

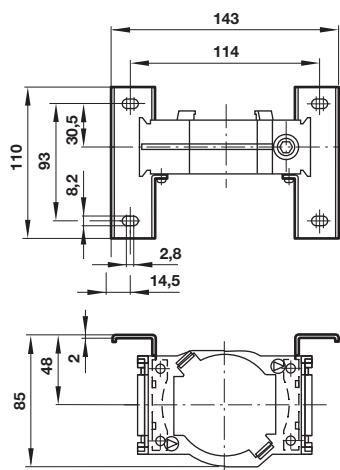
1 litre bowl



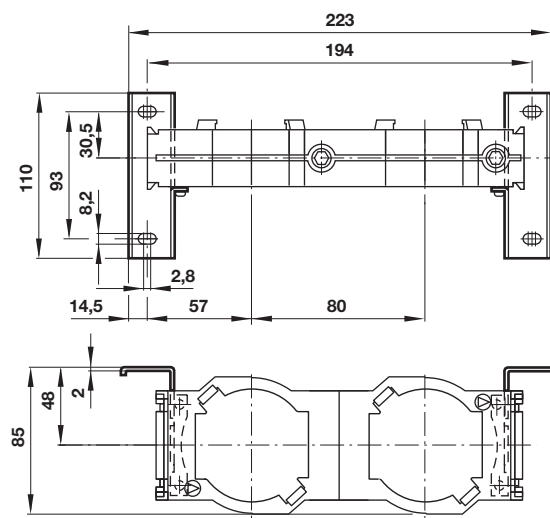
Dimensions in mm
Projection/First angle



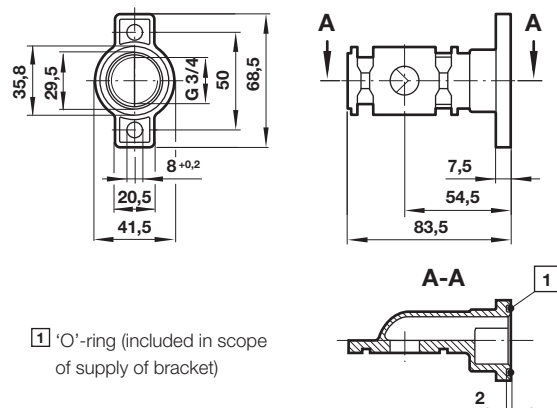
Single yoke with bracket mounting



Double yoke with bracket mounting

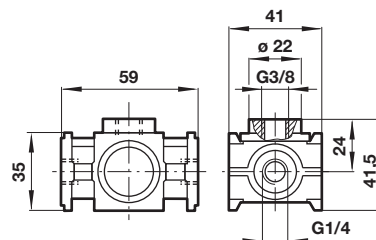


Rear entry bracket 18-026-981



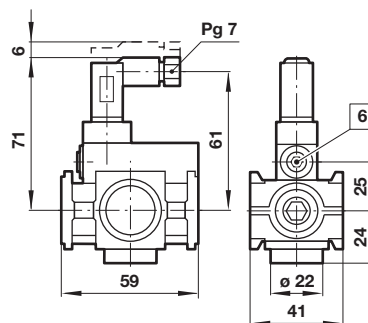
Porting block 74507-50

Dimensions in mm
Projection/First angle



Adjustable pressure switch 4346-99

Voltage	24 V d.c./240 V a.c.
Current	0,5 A (d.c.); 5 A (a.c.)
Pressure range	2 ... 10 bar
Repeatability	2% of full set point range at 20°C
Average deadband	0,8 ... 1,7 bar
Electrical connection (corresponding to choosen coil)	EN 175301-803 - Form C, 15 mm
Degree of protection:	IP65
Adjustable	Standard
Material	Body: Aluminium, Elastomers: NBR

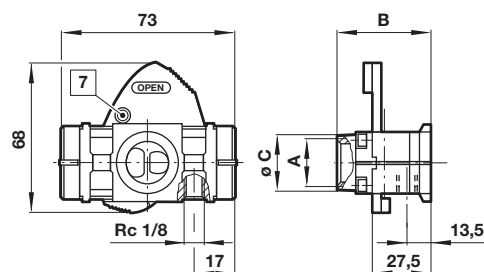


6 Adjusting screw

3/2 Shut-off valve

Symbol	A	B	ø C	Model
	G1/4	48	27	T64T-2G*-P1N
	G3/8	48	27	T64T-3G*-P1N
	G1/2	48	27	T64T-4G*-P1N
	G3/4	51	33	T64T-6G*-P1N

* B = Threaded inlet only, C = Threaded outlet only



7 Padlock hole ø7,5 mm

Warning

These products are intended for use in industrial compressed air systems only. Do not use these products where pressures and temperatures can exceed those listed under

»Technical features/data«.

Before using these products with fluids other than those specified, for non-industrial applications, life-support systems or other applications not within published specifications, consult IMI Precision Engineering, IMI International s.r.o. Through misuse, age, or malfunction, components used in fluid power systems can fail in various modes.

The system designer is warned to consider the failure modes of all component parts used in fluid power systems and to provide adequate safeguards to prevent personal injury or damage to equipment in the event of such failure.

System designers must provide a warning to end users in the system instructional manual if protection against a failure mode cannot be adequately provided.

System designers and end users are cautioned to review specific warnings found in instruction sheets packed and shipped with these products.

- > **Port size: 3/4" ... 1 1/2"**
(ISO G/PTF)
- > **Oil-fog option available**
- > **Micro-fog plug-in lubricators for best lubrication in general purpose pneumatic applications**



Technical features

Medium:

Compressed air only

Maximum operating pressure:

17 bar (246 psi)

10 bar (145 psi) for 5 litre bowl only

Start point:

Minimum flow required for lubricator operation at 6,3 bar

(91 psi) inlet pressure

Micro or Oil-fog: 6 dm³/s (13 scfm)

High flow lubricator:

52 dm³/s (110 scfm)

Flow:

Micro & Oil-fog:

175 dm³/s (371 scfm)

High flow: 400 dm³/s (848 scfm)

Port size 1",

Operating pressure: 6,3 bar (91 psi)

Δp: 0,5 bar (7 psi)

Bowl size:

0,5, 1 or 5 litre (17, 34 or 169 fluid oz)

Drain:

Without standard

Manual optional

Ambient/Media temperature:

-20° ... +80°C (-4° ... +176°F)

Air supply must be dry enough to avoid ice formation at temperatures below +2°C (+35°F).

Materials:

Body and yoke: Aluminium

Bowl: Aluminium (0,5 and 1 l);


Steel (5 l)

Sight dome: Pyrex (0,5 and 1 l);


PA (5 l)

Elastomers: NBR

Technical data L68C - Oil-fog lubricators; standard models

Symbol	Port size	Size	Weight (kg)	Model
	G3/4	—	2,10	L68C-6GP-ERN
	G1	Basic	2,04	L68C-8GP-ERN
	G1 1/4	—	2,08	L68C-AGP-ERN
	G1 1/2	—	2,12	L68C-BGP-ERN
	Without yoke	—	0,94	L68C-NNP-ERN

Technical data L68M - Micro-fog lubricators; standard models

Symbol	Port size	Size	Weight (kg)	Model
	G3/4	—	2,10	L68M-6GP-ERN
	G1	Basic	2,04	L68M-8GP-ERN
	G1 1/4	—	2,08	L68M-AGP-ERN
	G1 1/2	—	2,12	L68M-BGP-ERN
	Without yoke	—	0,94	L68M-NNP-ERN

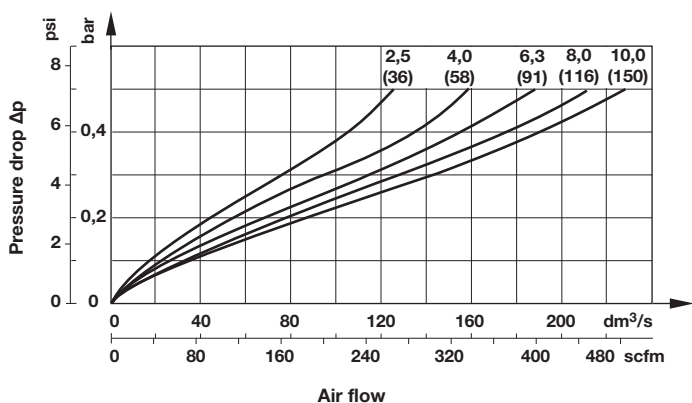
Option selector

Type	Substitute
Oil-fog	C
Micro-fog	M
Port size	Substitute
3/4"	6
1"	8
1 1/4"	A
1 1/2"	B
Without yoke	N
Threads	Substitute
PTF	A
ISO G parallel	G
Without	N

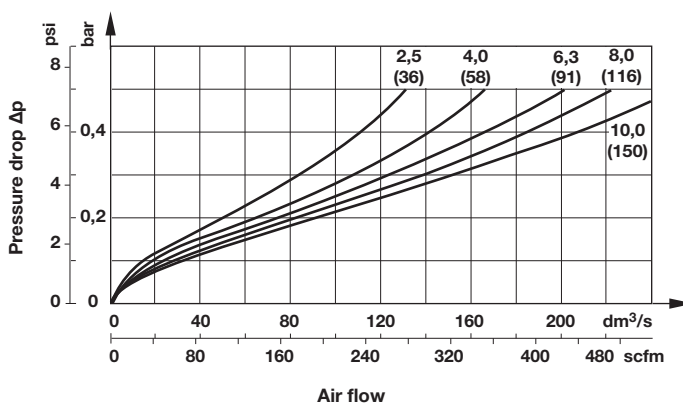
L68★-★★-★★★

Quick fill device	Substitute
Without (standard)	N
With	Q
Bowl	Substitute
0,5 l (standard)	R
1 l	U
5 l	V
Drain	Substitute
Closed bottom (standard)	E
Manual	M
Type	Substitute
Standard	P
»High flow« lubricator	E

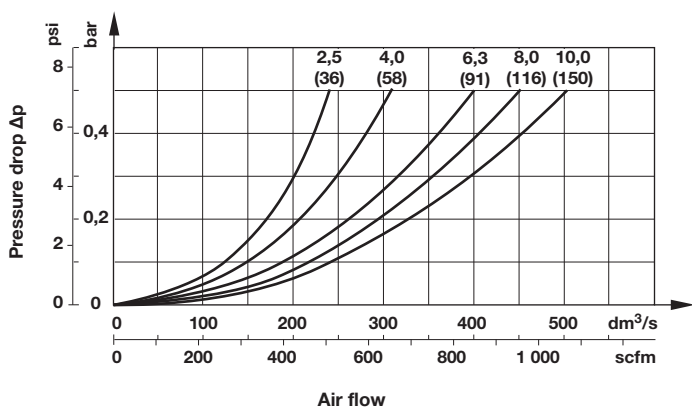
**Flow characteristics
Oil-fog, Port size 1"**










Micro-fog, Port size 1"



"High flow", Port size 1"



Accessories

	Single yoke	Double yoke	End connector kit	Single yoke non threads	3/2 Shut-off valve Threaded inlet only	Threaded outlet only	Bracket mounting
							
Thread							
G3/4	Y68A-6GN-N1N	Y68A-6GN-N2N	5524-55	74785-98	T68H-6GB-B2N	T68H-6GC-B2N	18-001-979
G1	Y68A-8GN-N1N	Y68A-8GN-N2N	5524-52		T68H-8GB-B2N	T68H-8GC-B2N	18-001-979
G1 1/4	Y68A-AGN-N1N	Y68A-AGN-N2N	5523-52		T68H-AGB-B2N	T68H-AGC-B2N	18-001-978
G1 1/2	Y68A-BGN-N1N	Y68A-BGN-N2N	5523-93		T68H-BGB-B2N	T68H-BGC-B2N	18-001-972
3/4 PTF	Y68A-6AN-N1N	Y68A-6AN-N2N	5524-53		T68H-6AB-B2N	T68H-6AC-B2N	18-001-979
1 PTF	Y68A-8AN-N1N	Y68A-8AN-N2N	5524-50		T68H-8AB-B2N	T68H-8AC-B2N	18-001-979
1 1/4 PTF	Y68A-AAN-N1N	Y68A-AAN-N2N	5523-50		T68H-AAB-B2N	T68H-AAC-B2N	18-001-978
1 1/2 PTF	Y68A-BAN-N1N	Y68A-BAN-N2N	5523-95		T68H-BAB-B2N	T68H-BAC-B2N	18-001-972

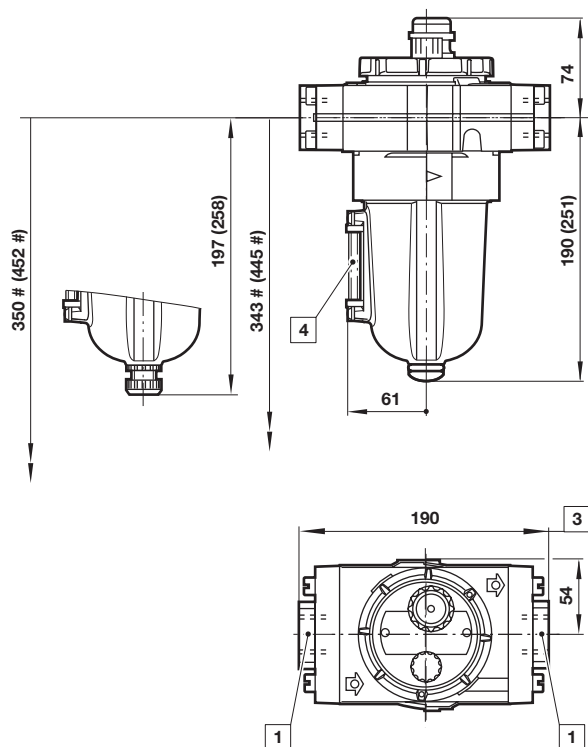
Nut	Quick fill device	Porting block
5520-89	18-011-021	18-026-986 (G1/4 & G1/2) 18-026-983 (1/4 & 1/2 NPT)

Service kit

Service kit
L68C-KIT (Oil-fog)
L68M-KIT (Micro-fog)

Dimensions

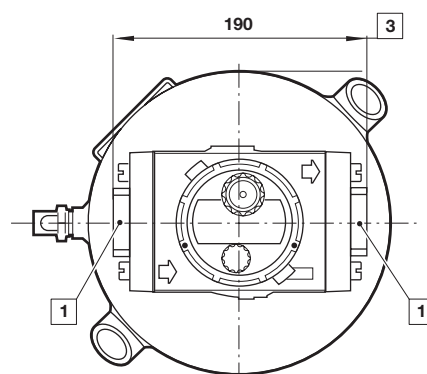
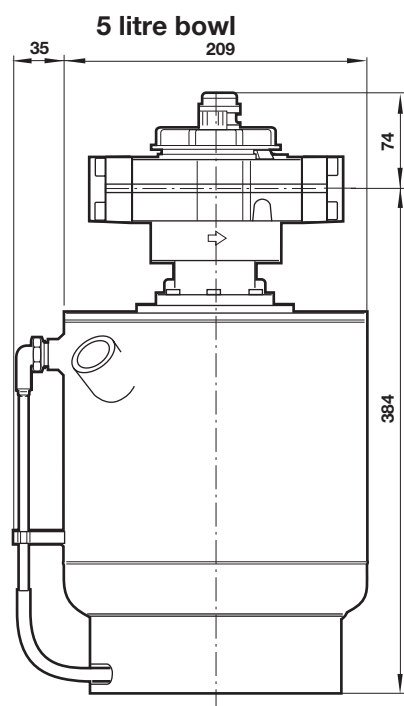
Dimensions in mm
Projection/First angle



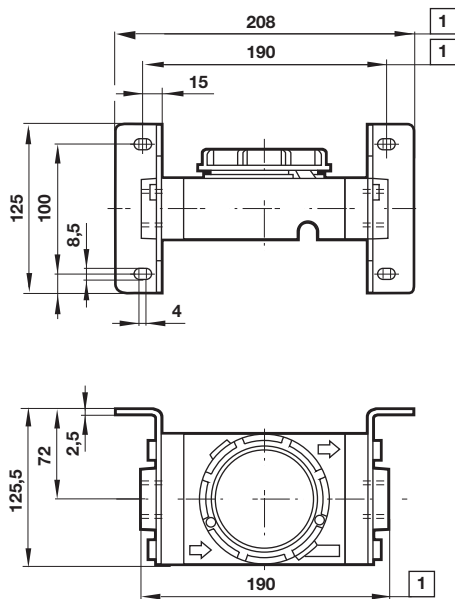
Minimum clearance required to remove bowl

() values for 1 litre bowl

- 1** Main ports 3/4", 1", 1 1/4" or 1 1/2"
- 3** Plus 10 mm for ports 1 1/4" or 1 1/2"
- 4** Sight glass



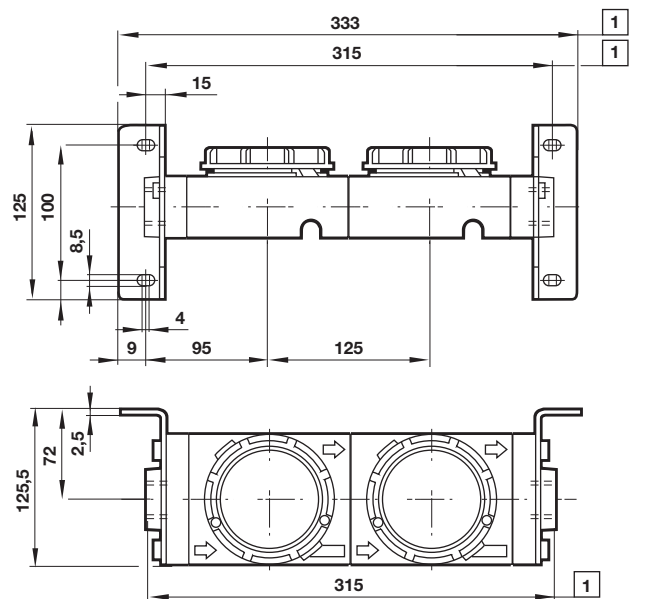
Single yoke with bracket



1 For 1 1/4\" and 1 1/2\" ported yokes add 10 mm

Double yoke with bracket

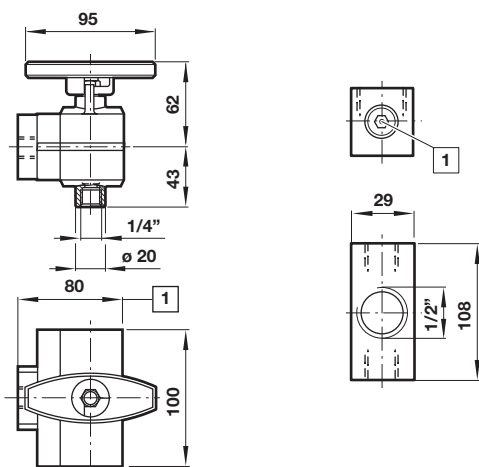
Dimensions in mm
 Projection/First angle



1 For 1 1/4\" and 1 1/2\" ported yokes add 10 mm

3/2 Shut-off valve

Porting block



1 For 1 1/2\" ported yokes add 5 mm

1 Two additional plugged G1/4 ports

Warning

These products are intended for use in industrial compressed air systems only. Do not use these products where pressures and temperatures can exceed those listed under

»Technical features/data«.

Before using these products with fluids other than those specified, for non-industrial applications, life-support systems or other applications not within published specifications, consult IMI Precision Engineering, IMI International s.r.o.

Through misuse, age, or malfunction, components used in fluid power systems can fail in various modes.

The system designer is warned to consider the failure modes of all component parts used in fluid power systems and to provide adequate safeguards to prevent personal injury or damage to equipment in the event of such failure.

System designers must provide a warning to end users in the system instructional manual if protection against a failure mode cannot be adequately provided.

System designers and end users are cautioned to review specific warnings found in instruction sheets packed and shipped with these products.

- > **Port size: 1/4" ... 1/2"**
(ISO G/PTF)
- > **Excelon design allows in-line or modular installation**
- > **Flow sensor provides a nearly constant oil/air ratio over a wide range of flows**
- > **All round (360°) visibility of sightfeed dome for ease of drip rate setting**



Technical features

Medium:

Compressed air only

Maximum operating pressure:

Transparent bowls:

10 bar (145 psi)

Metal bowls:

17 bar (250 psi)

Bowl:

0,1 litre

Drain:

Without standard

Manual optional

Port size:

G1/4, G3/8, G1/2,
1/4 PTF, 3/8 PTF 1/2 PTF

Flow:

Micro-fog : Start point 0,71 dm³/s,
max. 38 dm³/s at port size 3/8",
Operating pressure: 6,3 bar (91 psi)
Δp: 0,5 bar (7 psi)

Ambient/Media temperature:

Transparent bowl:

-34° ... +50°C (-30° ... +122°F)

Metal bowl:

-34° ... +80°C (-30° ... +176°F)

Air supply must be dry enough
to avoid ice formation at
temperatures below +2°C (+35°F).

Materials:


Bowl: Transparent PC alternative
transparent PC with steel guard
alternative aluminium

Body: Die cast aluminium


Sight-feed dome: Transparent PA

Elastomers: CR & NBR

Technical data L73C - Oil-fog lubricators; standard models

Symbol	Port size	Size	Pressure maximum (bar)	Drain	Bowl	Weight (kg)	Model
	G1/4	Basic	10	Without	PC (transparent)	0,50	L73C-2GP-ETN
	G3/8		10	Without	PC (transparent)	0,50	L73C-3GP-ETN
	G1/2		10	Without	PC (transparent)	0,50	L73C-4GP-ETN

Technical data L73M - Micro-fog lubricators; standard models

Symbol	Port size	Size	Pressure maximum (bar)	Drain	Bowl	Weight (kg)	Model
	G1/4	Basic	10	Without	PC (transparent)	0,50	L73M-3GP-ETN
	G3/8		10	Without	PC (transparent)	0,50	L73M-3GP-ETN
	G1/2		10	Without	PC (transparent)	0,50	L73M-4GP-ETN

Option selector

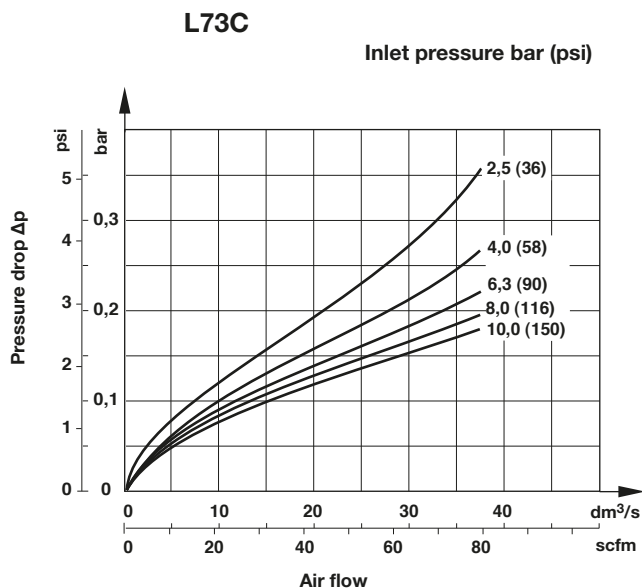
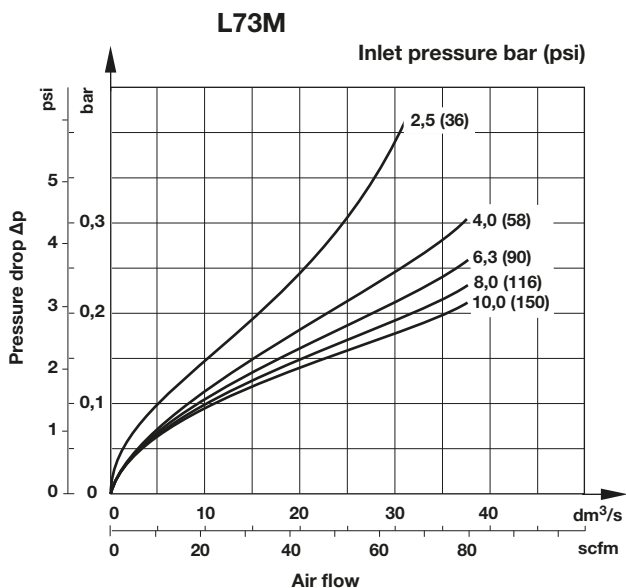
L73★-★★P-★★★

	Substitute
Oil fog lubricator	C
Micro fog lubricator	M
Port size	Substitute
1/4"	2
3/8"	3
1/2"	4
Thread form	Substitute
PTF	A
ISO G parallel (standard)	G

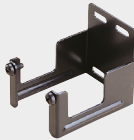






Option	Substitute
None (standard)	N
Quick fill nipple	Q
Bowl	Substitute
Transparent (standard)	T
Metal	D
Transparent with guard	P
Drain	Substitute
None	E
Manual (standard)	Q

Flow characteristics

Port size: G3/8



Accessories

Wall mounting bracket	Quikclamp®	Quikclamp with wall bracket®	Quikmount pipe adaptor *1)	Porting block with three alternative 1/4" ports	2/2 Shut-off valves (for full technical specification see datasheet 8.180.600)	3/2 Shut-off valves (for full technical specification see datasheet 8.180.600)
						
Page 3	Page 3	Page 3	Page 3	Page 3	Page 3	Page 3
4424-50	4314-51	4314-52	G1/4: 4315-09	G1/4: 4316-52	G1/4: T73B-2GA-P1N	G1/4: T73T-2GA-P1N
			G3/8: 4315-10	1/4 PTF: 4316-50	G3/8: T73B-3GA-P1N	G3/8: T73T-3GA-P1N
			G1/2: 4315-11		G1/2: T73B-4GA-P1N	G1/2: T73T-4GA-P1N
			1/4 PTF: 4315-01		1/4 PTF: T73B-3AA-P1N	1/4 PTF: T73T-3AA-P1N
			3/8 PTF: 4315-02		3/8 PTF: T73B-2AA-P1N	3/8 PTF: T73T-2AA-P1N
			1/2 PTF: 4315-03		1/2 PTF: T73B-4AA-P1N	1/2 PTF: T73T-4AA-P1N

*1) Please use a Quikmount pipe adaptor if the Quikclamp be mounted at inlet or outlet side.

Pressure switch

Porting block for pressure switch



Page 3

0523110000000000

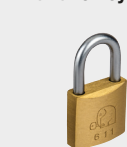
Pressure switch (0,5 ... 8 bar)



0881300000000000

Padlock

Padlock (brass) with two keys *1)



0613633000000000

*1) for shut-off valves

Service kits

Service kit

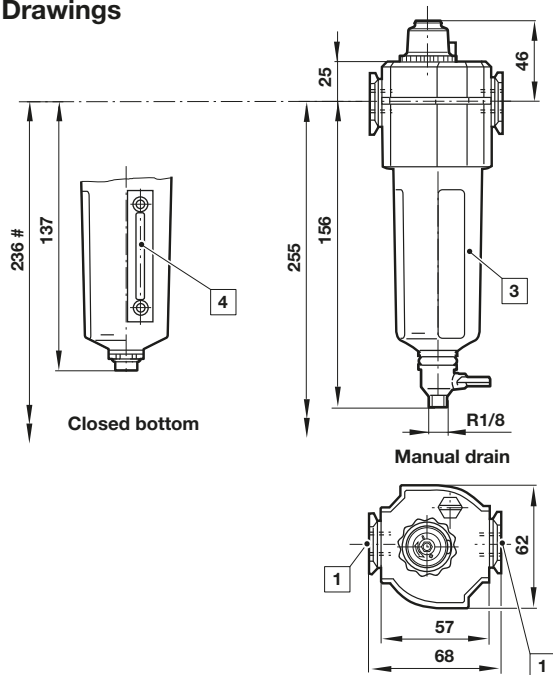


L73M-KIT

L73C-KIT

Drawings

Dimensions in mm
Projection/First angle



Minimum clearance required to remove bowl

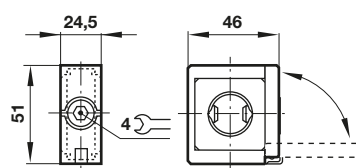
1 Main ports 1/4", 3/8" or 1/2"

3 Transparent bowl with or without guard

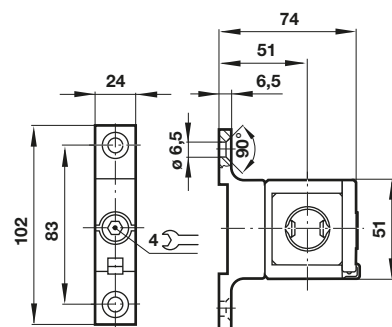
4 Metal bowl with liquid level indicator lens

Accessories

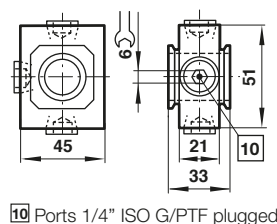
Quikclamp®



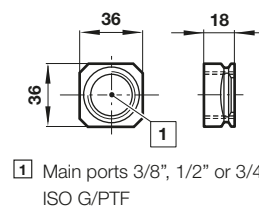
Quikclamp® with wall bracket



Porting block



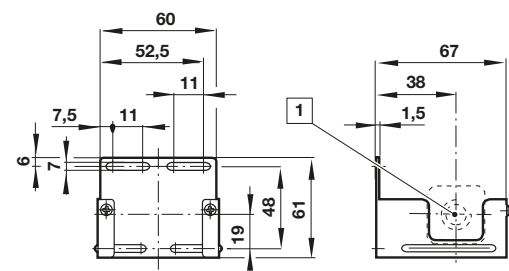
Pipe adapter



1 Main ports 3/8", 1/2" or 3/4"
ISO G/PTF

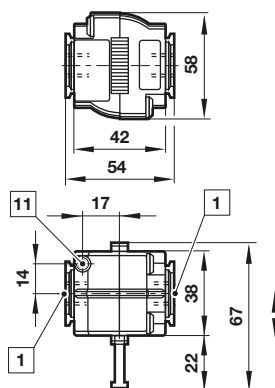
10 Ports 1/4" ISO G/PTF plugged

Wall mounting bracket



1 Main ports

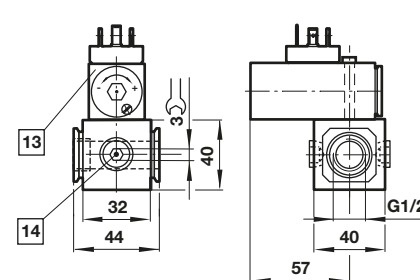
Shut-off valves



1 Main ports 1/4", 3/8" or 1/2" ISO G/PTF

11 Exhaust port M5 at 3/2 valve only

Porting block for pressure switch



13 Pressure switch is not in scope of delivery

14 Alternative G1/4 ports plugged

Warning

These products are intended for use in industrial compressed air systems only. Do not use these products where pressures and temperatures can exceed those listed under

»Technical features/data«.

Before using these products with fluids other than those specified, for non-industrial applications, life-support systems or other applications not within published specifications, consult IMI Precision Engineering, Norgren Inc.

Through misuse, age, or malfunction, components used in fluid power systems can fail in various modes.

The system designer is warned to consider the failure modes of all component parts used in fluid power systems and to provide adequate safeguards to prevent personal injury or damage to equipment in the event of such failure.

System designers must provide a warning to end users in the system instructional manual if protection against a failure mode cannot be adequately provided.

System designers and end users are cautioned to review specific warnings found in instruction sheets packed and shipped with these products.

L84M, L84C - Micro- and Oil-fog lubricator Excelon® Plus Modular System



- > Port size: 3/8" ... 3/4" (ISO G/PTF)
- > Excelon® Plus design allows in-line installation or modular installation with other Excelon® Plus products
- > Flow sensor provides a nearly constant oil/air ratio over a wide range of flows
- > Double safety lock bowl
- > Metal bowl with prismatic liquid level indicator lens
- > Light weight Polycarbonate bowl
- > All round (360°) visibility of sightdome for ease of drip rate setting
- > Choice of two oil delivery systems



Technical features

Medium:

Compressed air only

Maximum supply pressure:

Polycarbonate bowl: 10 bar (145 psi)

Metal bowl: 20 bar (290 psi)

Bowl

0,2 litre

Port size:

G3/8, G1/2, G3/4,
3/8 PTF, 1/2 PTF, 3/4 PTF

Flow:

Micro-fog : 73 dm³/s

Oil-fog: 91 dm³/s at port size:

1/2", operating pressure: 6,3 bar (91 psi) and Δp: 0,5 bar (7.25 psi)

Start point:

0,94 dm³/s

Ambient/Media temperature:

Polycarbonate bowl:

-10 ... +60°C (14 ... +140°F)

Metal bowl:

-20 ... +65°C (-4 ... +149°F)

Air supply must be dry enough to avoid ice formation at temperatures below +2°C (+35°F).

Materials:

Transparent Bowl : Polycarbonate with Polypropylene Guard.

Metal Bowl: Die cast Aluminium with PA liquid level indicator lens

Body: Die cast aluminium


Body cover: ABS

Sightdome: Transparent PA

Bowl 'o'- ring: Chloroprene

Elastomers: NBR

Technical data L84 - standard models

Symbol	Port size	Lubricator type	Bowl	Weight (kg)	Model
	G3/8	Micro fog	Guarded polycarbonate	0,40	L84M-3GP-EPN
	G1/2	Micro fog	Guarded polycarbonate	0,40	L84M-4GP-EPN
	G3/4	Micro fog	Guarded polycarbonate	0,40	L84M-6GP-EPN
	G3/8	Micro fog	Metal with level indicator	0,53	L84M-3GP-EDN
	G1/2	Micro fog	Metal with level indicator	0,53	L84M-4GP-EDN
	G3/4	Micro fog	Metal with level indicator	0,53	L84M-6GP-EDN
	G3/8	Oil fog	Guarded polycarbonate	0,40	L84C-3GP-EPN
	G1/2	Oil fog	Guarded polycarbonate	0,40	L84C-4GP-EPN
	G3/4	Oil fog	Guarded polycarbonate	0,40	L84C-6GP-EPN
	G3/8	Oil fog	Metal with level indicator	0,53	L84C-3GP-EDN
	G1/2	Oil fog	Metal with level indicator	0,53	L84C-4GP-EDN
	G3/4	Oil fog	Metal with level indicator	0,53	L84C-6GP-EDN

Option selector

L84★-★★P-E★N

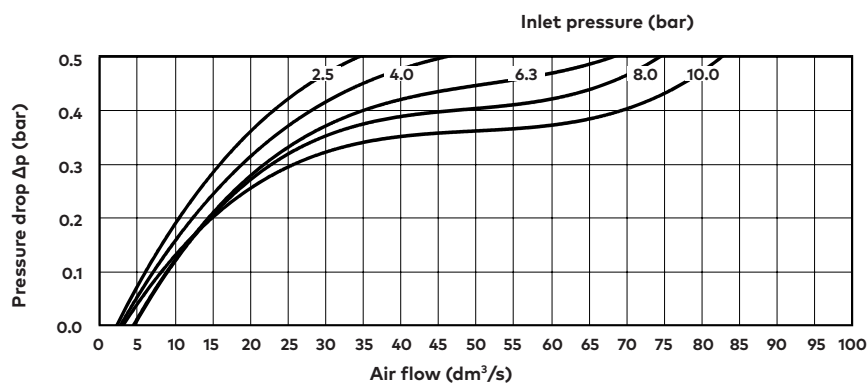
Type	Substitute
Oil fog lubricator	C
Micro fog lubricator	M
Port size	Substitute
3/8"	3
1/2"	4
3/4"	6
Thread form	Substitute
PTF	A
ISO G parallel (standard)	G

Bowl	Substitute
Metal with liquid level indicator	D
Transparent with guard (standard)	P

Flow characteristics

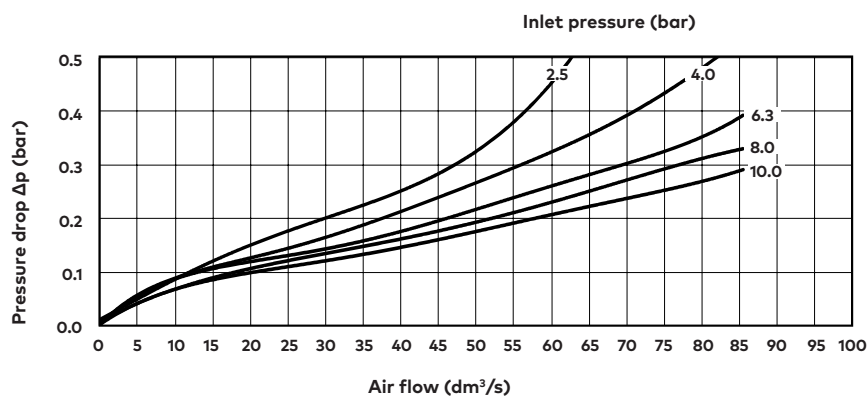
Micro fog

Port size: 1/2"



Oil fog

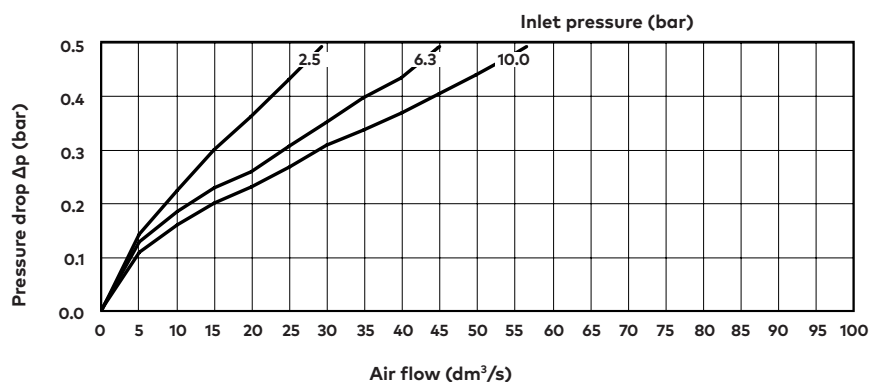
Port size: 1/2"



Flow characteristics

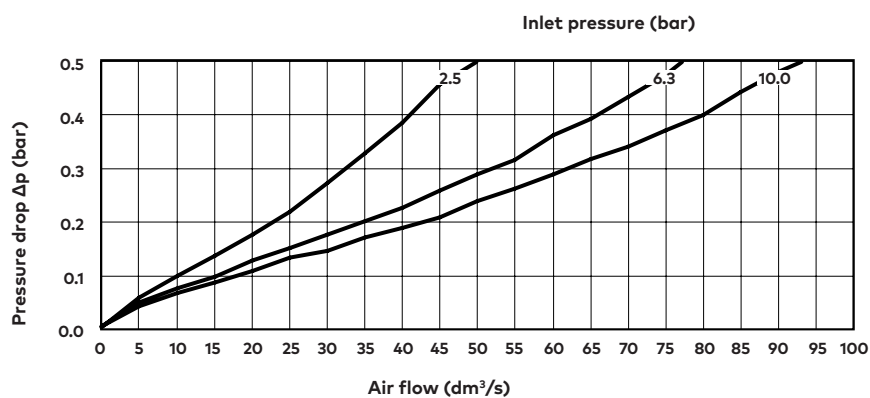
Micro fog

Port size: 3/8"



Oil fog

Port size: 3/8"



Accessories

Wall mounting bracket



Page 6

840024-50KIT

Quikclamp®



Page 6

840014-51KIT

Quikclamp® with bracket assembled



Page 6

840014-52KIT

Hybrid Quikclamp® *1



Page 6

840014-61

Hybrid Quikclamp® with bracket assembled *1



Page 6

840014-62

*1) To connect new Excelon Plus to old Excelon 74/73 units.
Having the same hole centres as 74 series mounting bracket.
A Quikclamp adds 13.6 mm to the overall width of a combination unit

Pressure sensing block 1/4 PTF



Page 6

840016-50KIT

Pressure sensing block G1/4



Page 6

840016-51KIT

Full flow porting block 3/4" PTF



Page 6

840028-50KIT

Full flow porting block G3/4



Page 6

840028-53KIT

Full flow porting block 3/4" PTF



Page 6

840028-68KIT

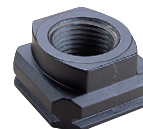
Full flow porting block G3/4



Page 6

840028-69KIT

Port Adaptors



Page 7

3/8 PTF	840015-02KIT
1/2 PTF	840015-03KIT
3/4 PTF	840015-04KIT
G3/8	840015-10KIT
G1/2	840015-11KIT
G3/4	840015-12KIT

Pressure switch interface block (18D pressure switch) G1/4



Page 8

033771700000000

Pressure switch 18D (0,5 ... 8bar) *1



Page 8

0881300

Digital pressure switch 51D (-1 ... 10 bar) *2



Page 8

0860810

Electronic Pressure Sensor – stand alone version *3



Q84G

IO-Link cables

Connection cable M8x1 for integrated digital pressure switch



Description	Cable length (m)	Model
M8 female to M12 male	0,6	NC-084FS-124MS-A
	1,0	NC-084FS-124MS-1
	2,0	NC-084FS-124MS-2
	5,0	NC-084FS-124MS-5
M8 female to free end	3,0	NC-084FS-00000-3

*1) Flanged version. For other pressure ranges, please see data sheet 5.11.001

*2) For other pressure ranges, please see data sheet 5.11.385

*3) Q84G standalone electronic pressure sensor module
see <http://s.norgren.com/digital-gauge-iodd> for data-sheet 8.900.905.

Service kits

Quick fill nipple



18-011-024

Lubricator bowl Guarded Poly



840025-52KIT

Lubricator bowl Metal with sight glass



840003-52KIT

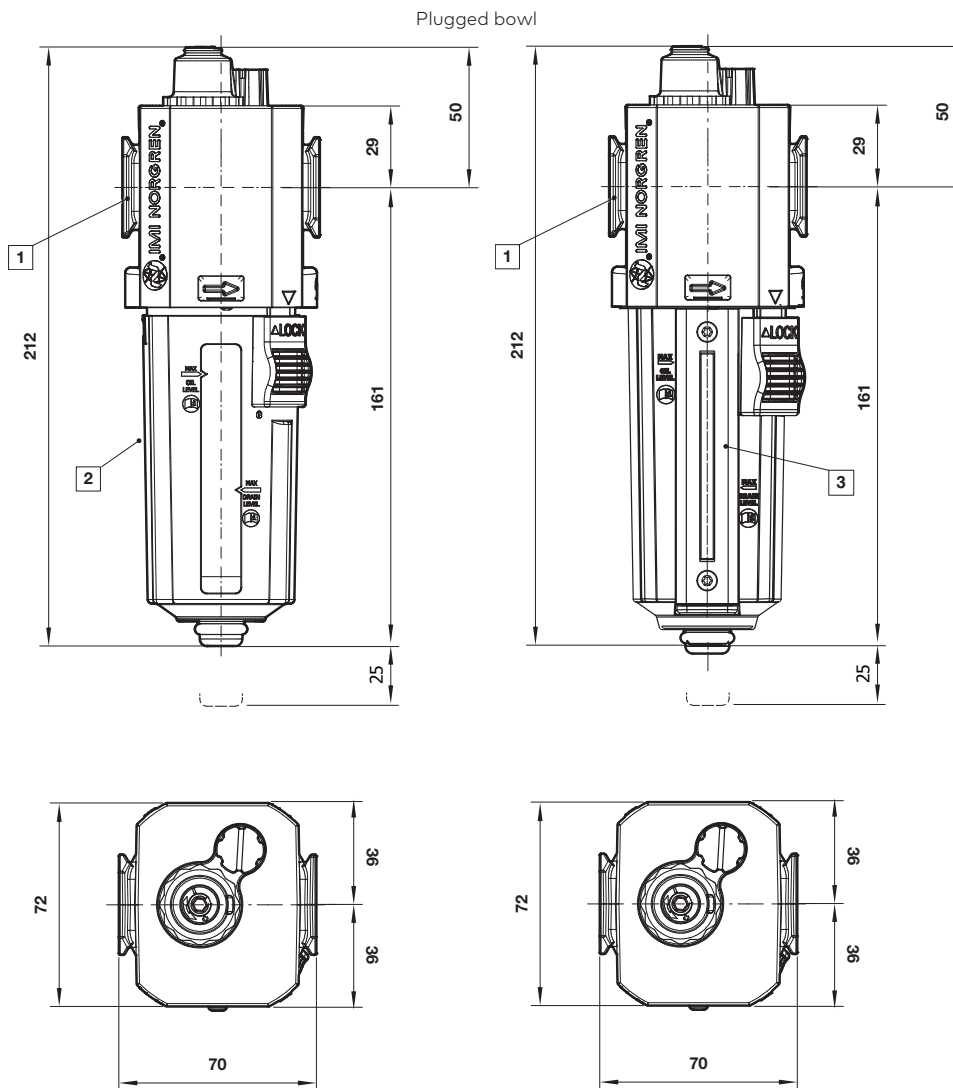
Lubricator sight dome kit



Micro fog (red) 840055-50KIT
Oil fog (green) 840055-51KIT

Dimensions

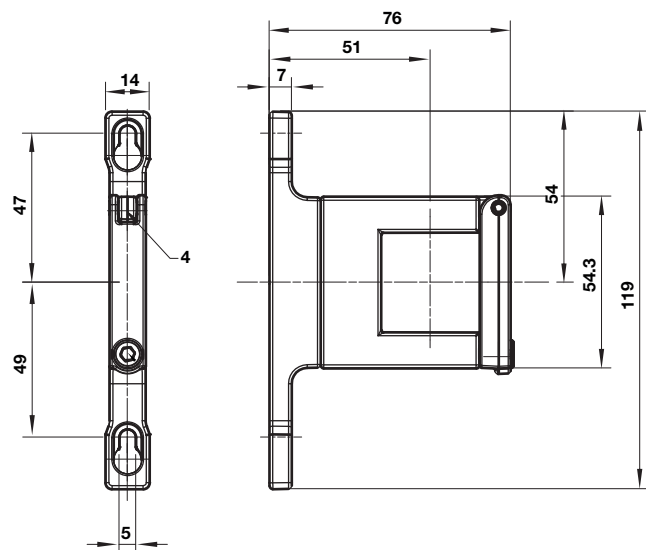
Dimensions in mm
Projection/First angle



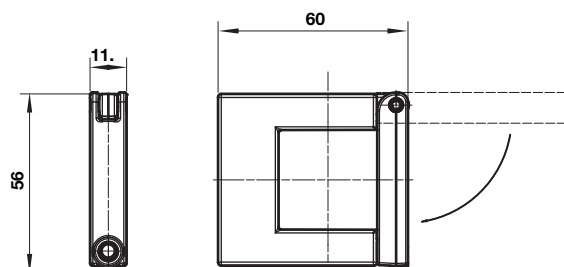
- 1 Main ports 3/8", 1/2" or 3/4"
(ISO G/PTF)
- 2 Transparent bowl with guard
- 3 Metal bowl with liquid level indicator lens

Accessories

Quikclamp® with wall bracket



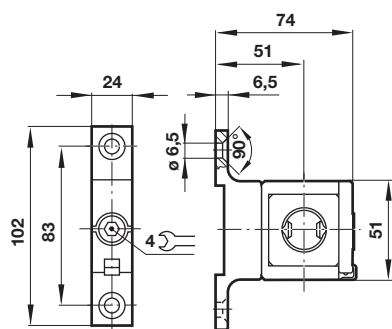
Quikclamp®



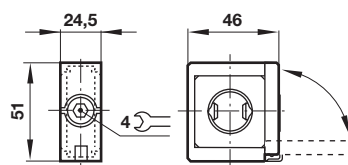
Dimensions in mm
Projection/First angle



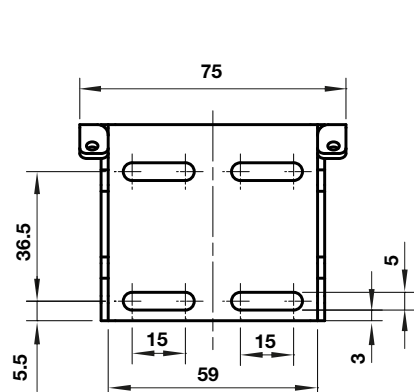
Hybrid-Quikclamp® with wall bracket



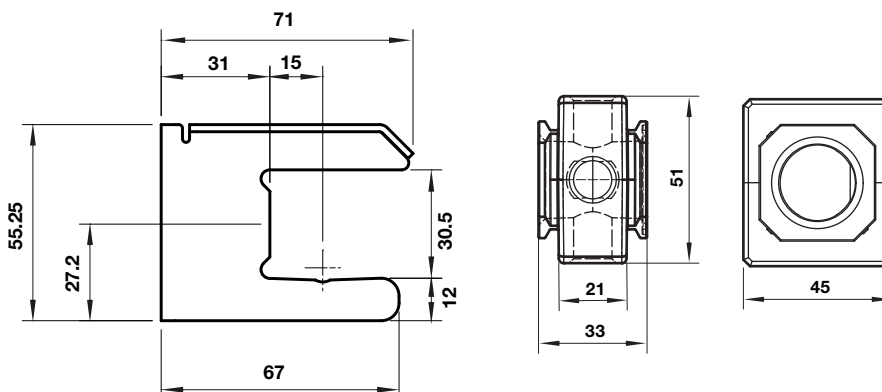
Hybrid-Quikclamp®



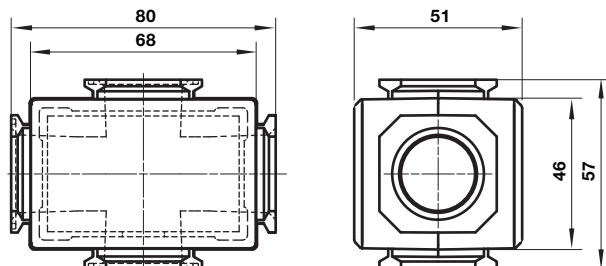
Mounting bracket



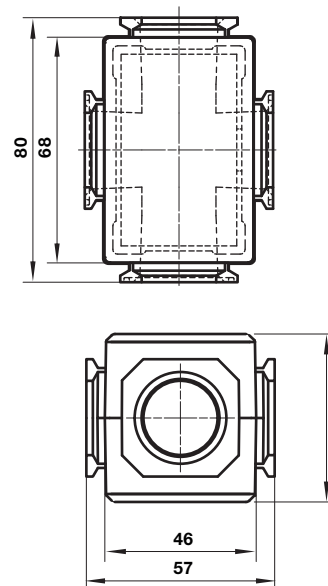
Pressure sensing block



Full flow porting block horizontal



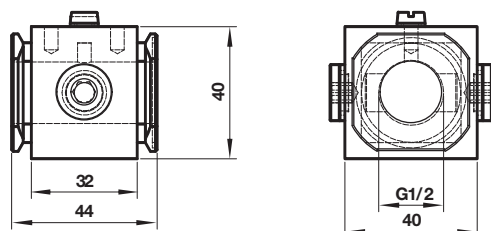
Full flow porting block vertical



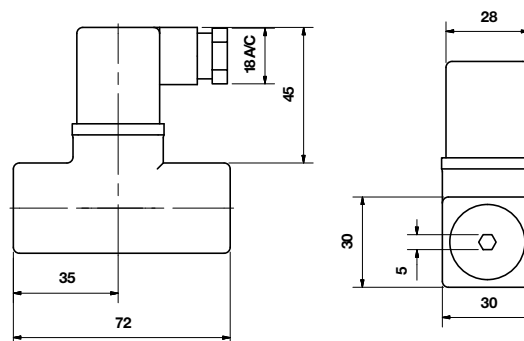
Dimensions in mm
Projection/First angle



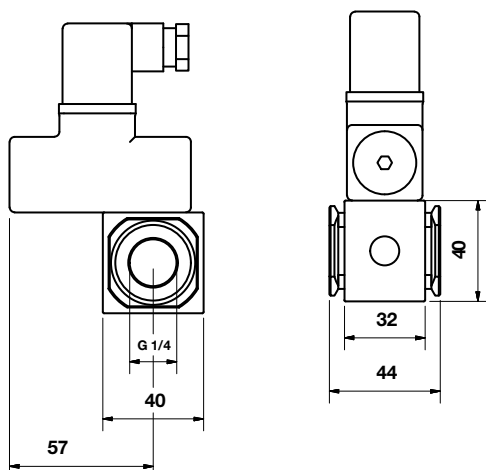
Porting block for 18D pressure switch



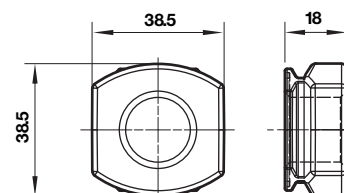
18D Pressure switch



18D Porting block and 18D assembled

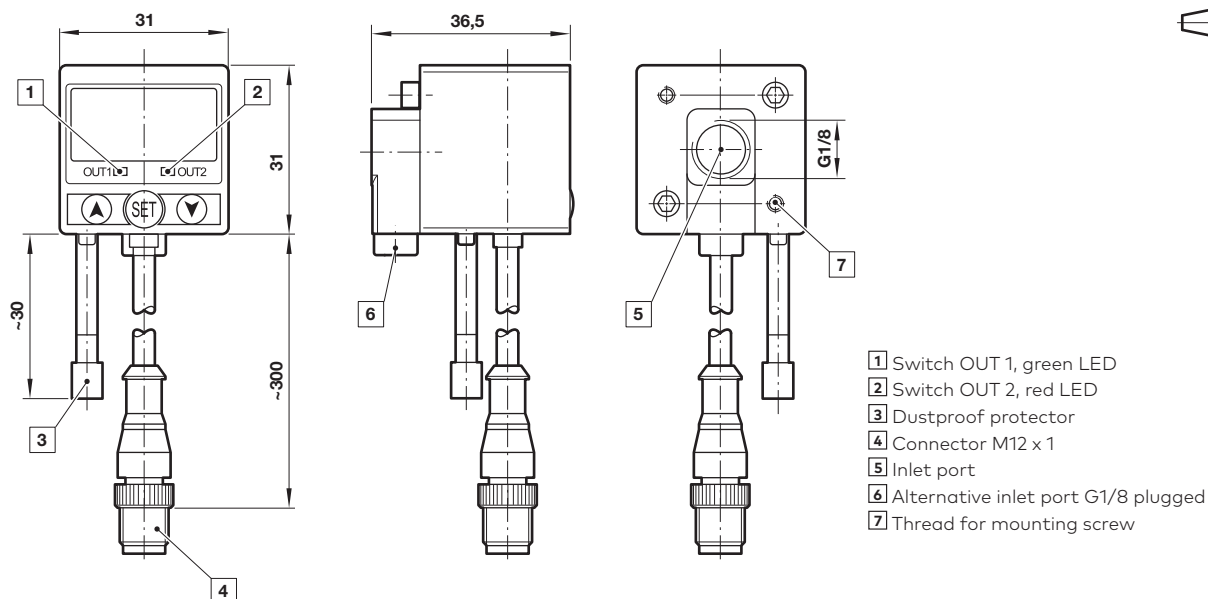


Pipe adaptor



51D Pressure switch - digital

Dimensions in mm
Projection/First angle



Warning

These products are intended for use in industrial compressed air systems only. Do not use these products where pressures and temperatures can exceed those listed under »**Technical features/data**«.

Before using these products with fluids other than those specified, for non-industrial applications, life-support systems or other applications not within published specifications, consult Norgren Ltd.

Through misuse, age, or malfunction, components used in fluid power systems can fail in various modes.

The system designer is warned to consider the failure modes of all component parts used in fluid power systems and to provide adequate safeguards to prevent personal injury or damage to equipment in the event of such failure.

System designers must provide a warning to end users in the system instructional manual if protection against a failure mode cannot be adequately provided.

System designers and end users are cautioned to review specific warnings found in instruction sheets packed and shipped with these products.